

| | | |
|-------------|----------|-------------|
| APP CRS | Rwy Idg | 8865 |
| 275° | TDZE | 999 |
| | Apt Elev | 1026 |

RNAV (RNP) Z RWY 27L

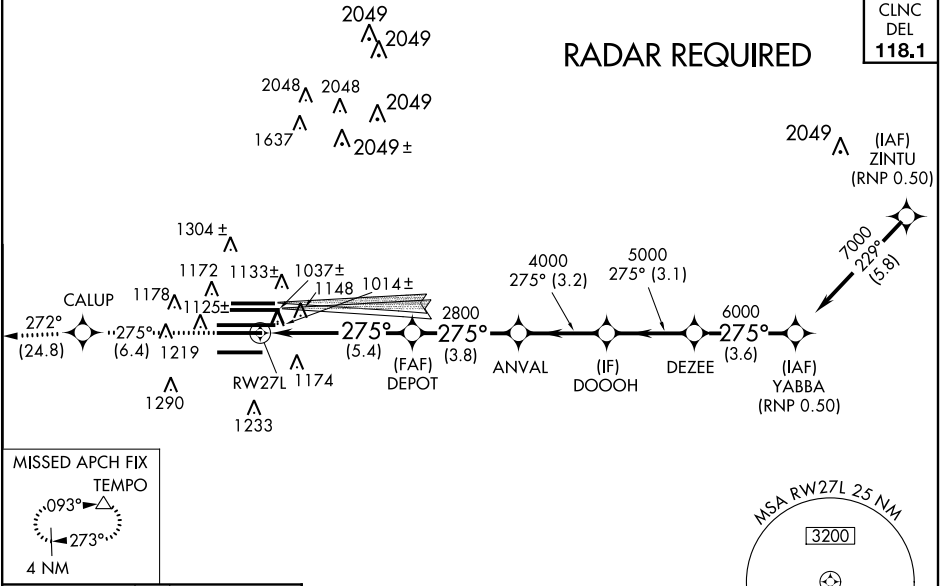
ATLANTA/ HARTSFIELD-JACKSON ATLANTA INTL (ATL)

▼ For uncompensated Baro-VNAV systems, procedure NA below -8°C (17°F) or above 54°C (130°F). For inoperative ALSF-2, increase RNP 0.11 all Cats visibility to RVR 5000, RNP 0.15 all Cats visibility to RVR 6000, RNP 0.30 all Cats visibility to 1¾. GPS required. Simultaneous approach authorized with ILS or LOC Rwy 26L, ILS or LOC Rwy 26R, ILS Rwy 26 (Cat II). Use of FD or AP providing RNAV track guidance required during simultaneous operations.

ALSF-2

MISSED APPROACH: Climb to 4000 on track 275° to CALUP and on track 272° to TEMPO and hold.

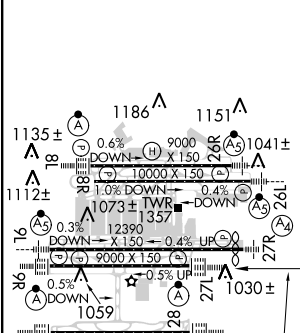
| | | | | | | | | | | | |
|-------------------|--------------------|---------------|----------------|---------------|--------------|--------------|--------------|-----------------|-----------------|---------------|--------------|
| ATIS | ATLANTA | ATLANTA TOWER | | | | | ALL | GND CON | ALL | | |
| ARR 119.65 | APP CON | 8L-26R | 8R-26L | 9L-27R | 9R-27L | 10-28 | RWYS | (8L-26R,8R-26L) | (9L-27R,9R-27L) | 10-28 | RWYS |
| DEP 125.55 | 127.9 379.9 | 119.1 | 125.325 | 123.85 | 119.3 | 119.5 | 254.4 | 121.9 | 121.75 | 121.65 | 254.4 |



SE-4, 07 FEB 2013 to 07 MAR 2013

SE-4, 07 FEB 2013 to 07 MAR 2013

| | | |
|-----------|----------|----------|
| ELEV 1026 | D | TDZE 999 |
|-----------|----------|----------|



| | | | | |
|-------------|---|---------|--------------|---|
| CATEGORY | A | B | C | D |
| RNP 0.11 DA | | 1251/40 | 252 (300-¾) | |
| RNP 0.15 DA | | 1324/40 | 325 (300-¾) | |
| RNP 0.30 DA | | 1471/60 | 472 (500-1¼) | |

AUTHORIZATION REQUIRED