


APP CRS	Rwy Idg	8800
275°	TDZE	990
	Apt Elev	1026

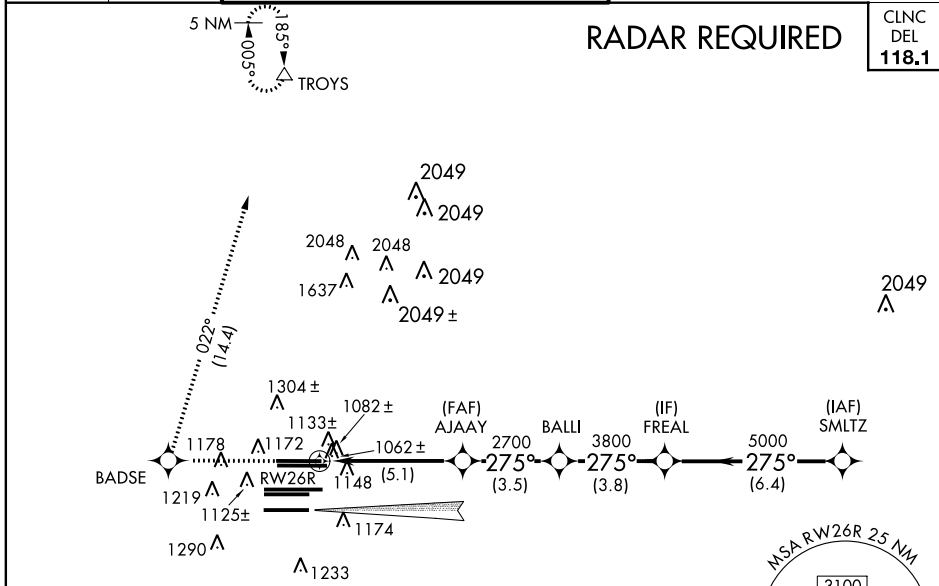
RNAV (RNP) Z RWY 26R

ATLANTA/ HARTSFIELD-JACKSON ATLANTA INTL (ATL)

▼ For uncompensated Baro-VNAV systems, procedure NA below -9°C (16°F) or above 54°C (130°F). For inoperative MALS/R, increase RNP 0.11 and RNP 0.15 all Cats visibility to RVR 6000, RNP 0.30 all Cats visibility to 1½. GPS required. Simultaneous approach authorized with ILS or LOC Rwy 28, ILS Rwy 28 (Cat II), RNAV (GPS) Y Rwy 28. Use of FD or AP providing RNAV track guidance required during simultaneous operations.

MALS/R
 MISSED APPROACH: Climb to 3500 direct BADSE and right turn on track 022° to TROYS and hold.

ATIS	ATLANTA	ATLANTA TOWER				ALL	GND CON	ALL
ARR 119.65	APP CON	8L-26R	8R-26L	9L-27R	9R-27L	10-28	RWYS (8L-26R,8R-26L)	10-28
DEP 125.55	127.9 379.9	119.1	125.325	123.85	119.3	119.5	254.4	121.9 121.75 121.65 254.4



SE-4, 07 FEB 2013 to 07 MAR 2013

SE-4, 07 FEB 2013 to 07 MAR 2013

