

APP CRS	Rwy Idg	10000
275°	TDZE	995
	Apt Elev	1026

RNAV (RNP) Z RWY 26L

ATLANTA/ HARTSFIELD - JACKSON ATLANTA INTL (ATL)

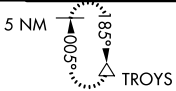
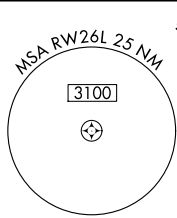
▼ For uncompensated Baro-VNAV systems, procedure NA below -9° C (16° F) or above 54° C (130° F). For inoperative MALSR, increase RNP 0.11* all Cats visibility to RVR 4500, RNP 0.11 and RNP 0.15 all Cats visibility to RVR 6000, RNP 0.30 all Cats visibility to 1½. GPS required. RNP 0.11* missed approach requires minimum climb of 395 feet per NM to 1800. Simultaneous approach authorized with RNAV (GPS) Y Rwy 28, ILS or LOC Rwy 28, ILS Rwy 28 (Cat II). Use of FD or AP providing RNAV track guidance required during simultaneous operations.

MALSR



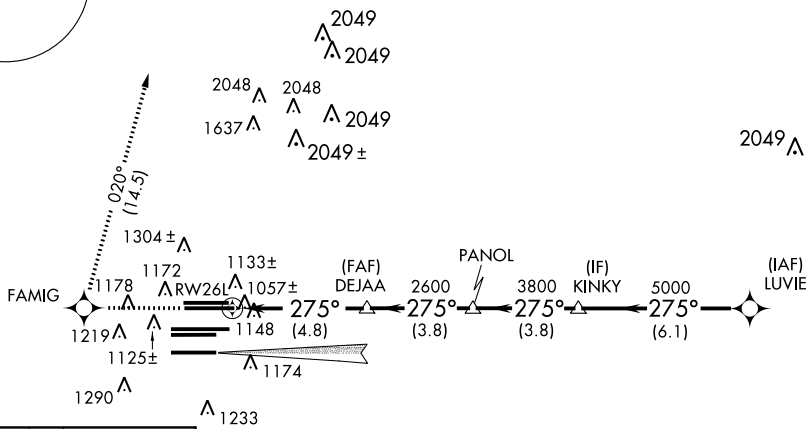
MISSED APPROACH:
Climb to 3500 direct
FAMIG and right turn
on track 020° to
TROYS and hold.

ATIS	ATLANTA	ATLANTA TOWER				ALL	GND CON	ALL	
ARR 119.65	APP CON	8L-26R	8R-26L	9L-27R	9R-27L	10-28	RWYS (8L-26R,8R-26L)	(9L-27R,9R-27L) 10-28	RWYS
DEP 125.55	127.9 379.9	119.1	125.325	123.85	119.3	119.5	254.4	121.9	121.75 121.65 254.4



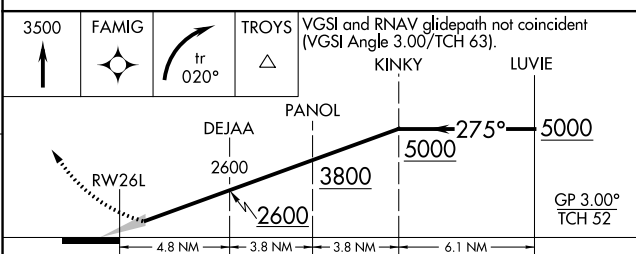
RADAR REQUIRED

CNLC	DEL
118.1	



ELEV 1026 TDZE 995

HIRL all runways
TDZ/CL Rwy 8L, 9R, 10, 26R,
27L and 28



CATEGORY	A	B	C	D
RNP 0.11 DA*		1274/24	279 (300-½)	
RNP 0.11 DA		1383/45	388 (400-¾)	
RNP 0.15 DA		1390/45	395 (400-¾)	
RNP 0.30 DA		1427/50	432 (500-1)	

AUTHORIZATION REQUIRED

SE-4, 07 FEB 2013 to 07 MAR 2013

SE-4, 07 FEB 2013 to 07 MAR 2013