

APP CRS	Rwy Idg	9000
095°	THRE	1000
	Apt Elev	1026

RNAV (RNP) Z RWY 10

ATLANTA/HARTSFIELD-JACKSON ATLANTA INTL (ATL)

▼ For uncompensated Baro-VNAV systems, procedure NA below -8°C (16°F) or above 54°C (130°F). For inoperative ALSF, increase RNP 0.11 all Cats visibility to RVR 5000, RNP 0.15 all Cats visibility to 1 3/8, RNP 0.30 all Cats visibility to 1 3/4 mile. RF Required. GPS Required. Simultaneous approach authorized with ILS or LOC Rwy 8L, ILS Rwy 8L (Cat III), ILS Rwy 8L (Cat III), ILS or LOC Rwy 8R, ILS Rwy 8R (Cat II), ILS Rwy 8R (Cat III). Use of FD or AP providing RNAV track guidance required during simultaneous operations.

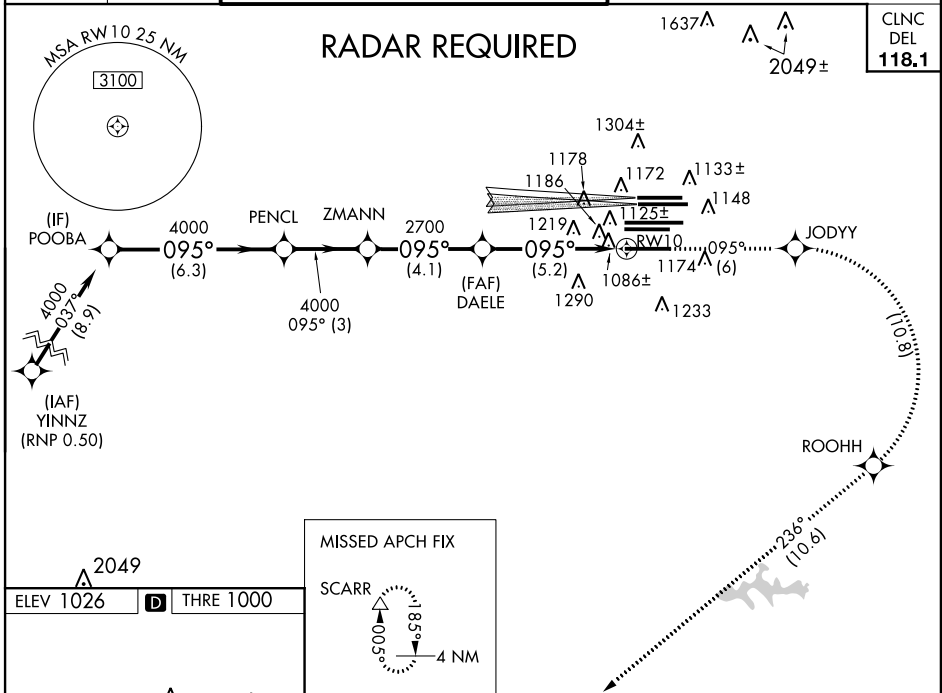
ALSF-2



MISSED APPROACH: Climb to 3000 on track 095° to JODYY right turn to ROOHH and on track 236° to SCARR and hold.

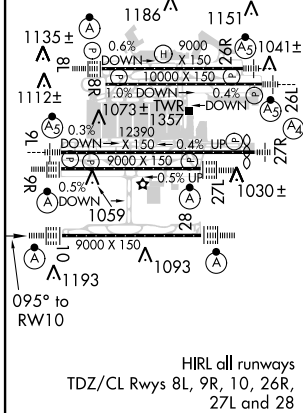
ATIS	ATLANTA	ATLANTA TOWER				ALL	GND CON	ALL	
ARR 119.65	APP CON	8L-26R	8R-26L	9L-27R	9R-27L	10-28	RWYS (8L-26R,8R-26L) (9L-27R,9R-27L)	10-28	RWYS
DEP 125.55	127.9 379.9	119.1	125.325	123.85	119.3	119.5	254.4	121.9	121.75 121.65 254.4

RADAR REQUIRED



SE-4, 07 FEB 2013 to 07 MAR 2013

SE-4, 07 FEB 2013 to 07 MAR 2013



3000	tr 095°	JODYY	ROOHH	tr 236°	SCARR
POOBA	PENCL	ZMANN	DAELE	RWY 10	
4000	4000	4000	2700		
GP 3.00°					
TCH 58					
	6.3 NM	3 NM	4.1 NM	5.2 NM	
CATEGORY	A	B	C	D	
RNP 0.11 DA		1327/32	327 (400-5/8)		
RNP 0.15 DA		1408/45	408 (400-7/8)		
RNP 0.30 DA		1515/60	515 (500-1 1/4)		

AUTHORIZATION REQUIRED