

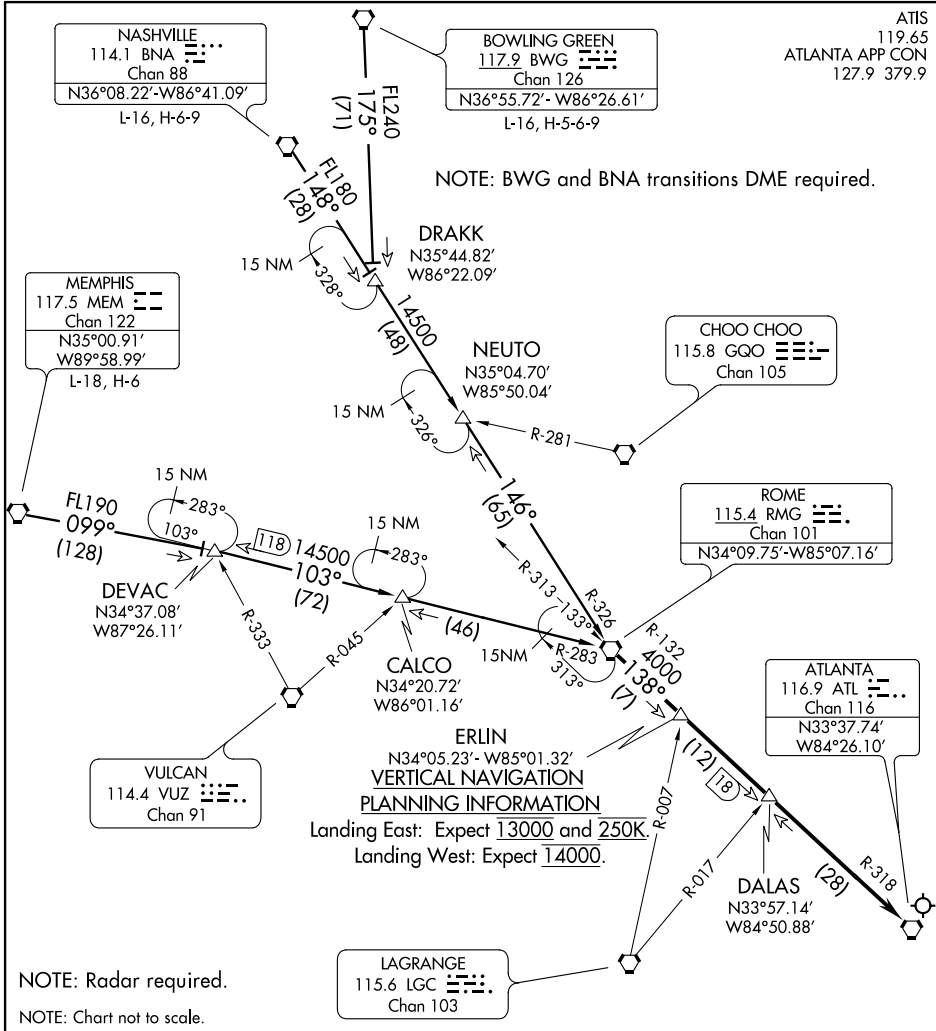
(RMG.RMG5) 12320
ROME FIVE ARRIVAL

HARTSFIELD-JACKSON ATLANTA INTL (ATL)
 ATLANTA, GEORGIA

ST-26 (FAA)

ATIS
 119.65
 ATLANTA APP CON
 127.9 379.9

NOTE: BWG and BNA transitions DME required.



NOTE: Radar required.

NOTE: Chart not to scale.

ARRIVAL ROUTE DESCRIPTION

BOWLING GREEN TRANSITION (BWG.RMG5): From over BWG VORTAC via BWG R-175 to DRAKK, then via BNA R-148 and RMG R-326 to RMG VORTAC. Thence. . .

MEMPHIS TRANSITION (MEM.RMG5): From over MEM VORTAC via MEM R-099 to DEVAC INT, then via RMG R-283 to RMG VORTAC. Thence. . .

NASHVILLE TRANSITION (BNA.RMG5): From over BNA VORTAC via BNA R-148 and RMG R-326 to RMG VORTAC. Thence. . .

. . . From over RMG VORTAC via ATL R-318 to ATL VORTAC. Expect radar vectors to final approach course after DALAS INT.

ROME FIVE ARRIVAL
 (RMG.RMG5) 12320

ATLANTA, GEORGIA
 HARTSFIELD-JACKSON ATLANTA INTL (ATL)

SE-4, 07 FEB 2013 to 07 MAR 2013

SE-4, 07 FEB 2013 to 07 MAR 2013