

(PECHY.PECHY8) 12320

PECHY EIGHT ARRIVAL (RNAV)

HARTSFIELD-JACKSON ATLANTA INTL (ATL)

ST-26 (FAA)

ATLANTA, GEORGIA

ATIS
119.65
ATLANTA APP CON
127.9 379.9

CHARLESTON TRANSITION (HVQ.PECHY8):

SPAYD TRANSITION (SPAYD.PECHY8):

From over PECHY on track 220° to KEEEN, then on track 220° to STONN, thence assigned runway transition.

Landing East Rwy 8L/R: From over STONN on track 220° to DOEVR, then on track 275° to NOFIV, then on track 275° to NOTRE, then on track 275° to WOTBA, then on heading 275°. Expect radar vectors to final approach course.

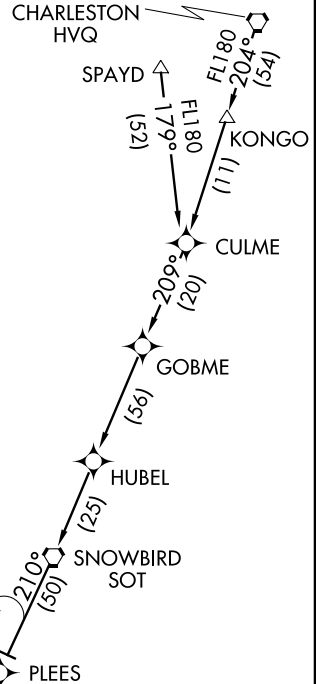
Landing East Rwy 9L/R, 10: From over STONN on track 198° to BOJAA, then on track 275° to FOGOG, then on track 275° to SOTRE, then on track 275° to HESPI, then on heading 275°. Expect radar vectors to final approach course.

Landing West Rwy 26L/R, 27L/R, 28: From over STONN on track 220° to DOEVR, then on track 275° to NOFIV, then on track 275° to NOTRE, then on track 275° to WOTBA, then on heading 275°. Expect radar vectors to final approach course after STONN.

LOST COMMUNICATIONS:

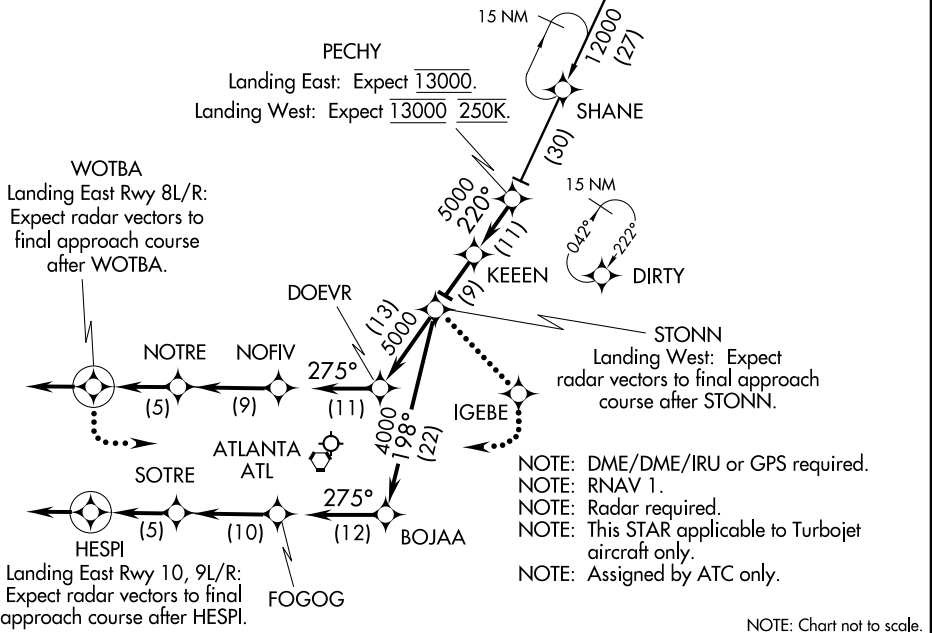
EAST OPERATION: At WOTBA fly heading 180°, maintain 5000; intercept and execute ILS or LOC Rwy 8L approach.

WEST OPERATION: At STONN track to IGEBE, fly heading 180°, maintain 5000; intercept and execute ILS or LOC Rwy 26R approach. If unable, proceed to ATL VORTAC and hold, maintain 5000.



SE-4, 07 FEB 2013 to 07 MAR 2013

SE-4, 07 FEB 2013 to 07 MAR 2013



- NOTE: DME/DME/IRU or GPS required.
- NOTE: RNAV 1.
- NOTE: Radar required.
- NOTE: This STAR applicable to Turbojet aircraft only.
- NOTE: Assigned by ATC only.

NOTE: Chart not to scale.

PECHY EIGHT ARRIVAL (RNAV)

(PECHY.PECHY8) 12320

ATLANTA, GEORGIA
HARTSFIELD-JACKSON ATLANTA INTL (ATL)