

(NUGGT6.NUGGT) 13010

ATLANTA/ HARTSFIELD-JACKSON ATLANTA INTL (ATL)

NUGGT SIX DEPARTURE (RNAV)

SL-26 (FAA)

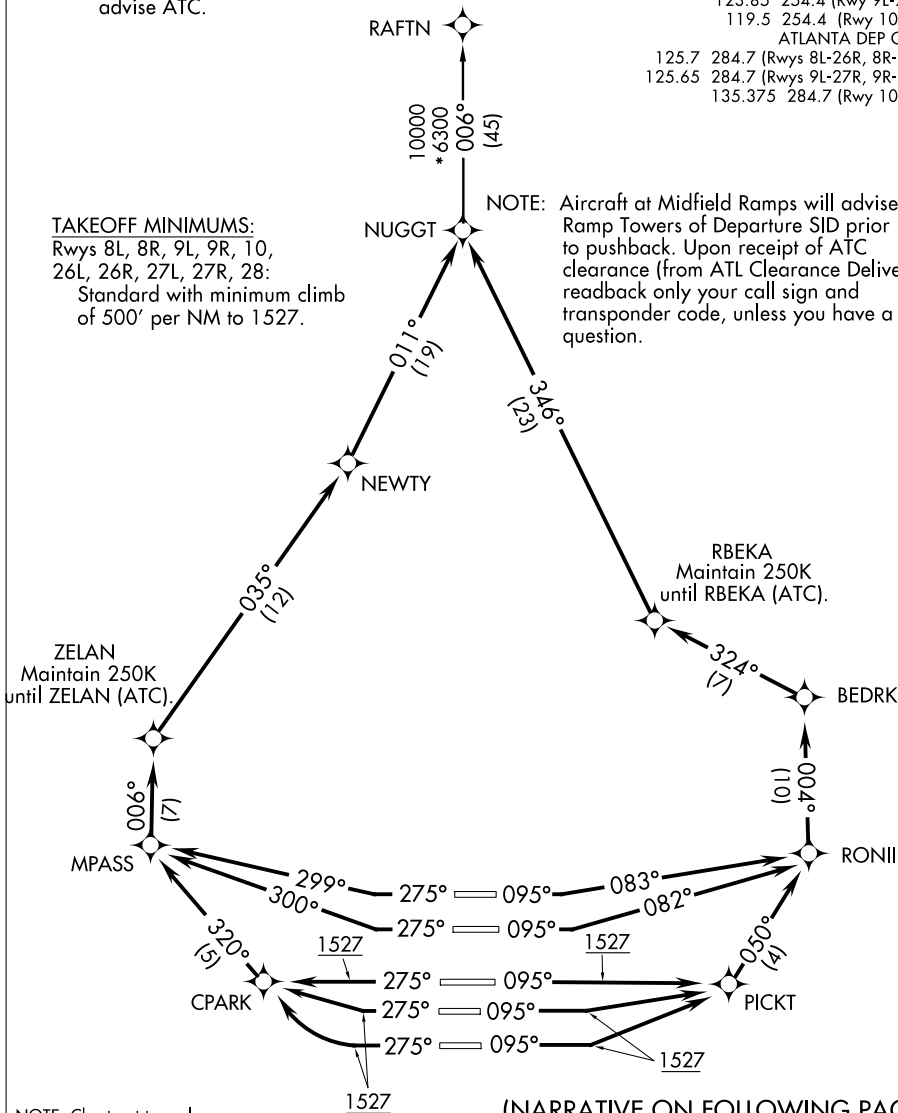
ATLANTA, GEORGIA

- NOTE: If unable to accept climb rate, advise ATC on initial contact.
- NOTE: Use departure frequency depicted unless otherwise assigned.
- NOTE: For Turbojets only.
- NOTE: DME/DME/IRU or GPS required.
- NOTE: RNAV 1.
- NOTE: Radar required for non-GPS equipped aircraft.
- NOTE: Transponder code will be issued via PDC or Atlanta clearance delivery.
- NOTE: Accelerate to 250K, if unable, advise ATC.

ATIS 125.55
 CLNC DEL 118.1
 GND CON
 121.9 254.4 (Rwys 8L-26R, 8R-26L)
 121.75 254.4 (Rwys 9L-27R, 9R-27L)
 121.65 254.4 (Rwy 10-28)
 ATLANTA TOWER
 119.1 254.4 (Rwy 8L-26R)
 125.325 254.4 (Rwy 8R-26L)
 119.3 254.4 (Rwy 9R-27L)
 123.85 254.4 (Rwy 9L-27R)
 119.5 254.4 (Rwy 10-28)
 ATLANTA DEP CON
 125.7 284.7 (Rwys 8L-26R, 8R-26L)
 125.65 284.7 (Rwys 9L-27R, 9R-27L)
 135.375 284.7 (Rwy 10-28)

TAKEOFF MINIMUMS:
 Rwys 8L, 8R, 9L, 9R, 10,
 26L, 26R, 27L, 27R, 28:
 Standard with minimum climb
 of 500' per NM to 1527.

NOTE: Aircraft at Midfield Ramps will advise Ramp Towers of Departure SID prior to pushback. Upon receipt of ATC clearance (from ATL Clearance Delivery), readback only your call sign and transponder code, unless you have a question.



NOTE: Chart not to scale

(NARRATIVE ON FOLLOWING PAGE)

NUGGT SIX DEPARTURE (RNAV)

ATLANTA, GEORGIA

(NUGGT6.NUGGT) 13010

ATLANTA/ HARTSFIELD-JACKSON ATLANTA INTL (ATL)

SE-4, 07 FEB 2013 to 07 MAR 2013

SE-4, 07 FEB 2013 to 07 MAR 2013