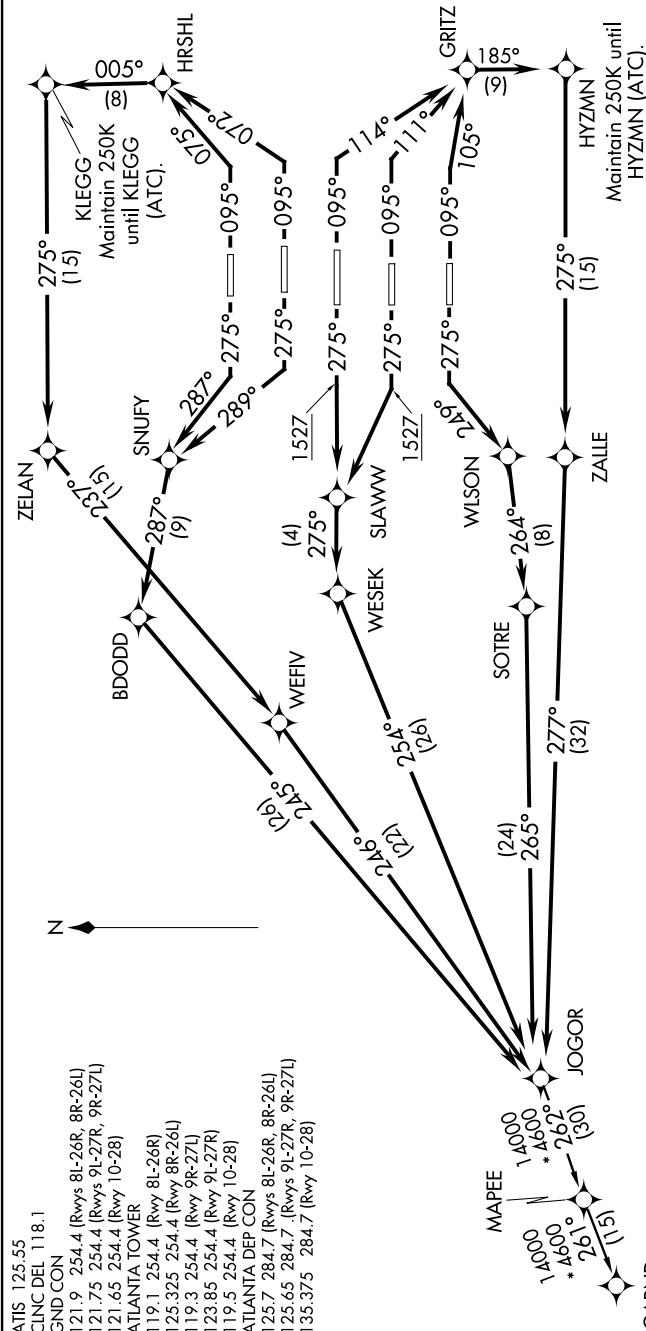


SE-4, 07 FEB 2013 to 07 MAR 2013



- NOTE: If unable to accept climb rate, advise ATC on initial contact.
- NOTE: Use departure frequency depicted unless otherwise assigned.
- NOTE: For Turbojets only.
- NOTE: DME/DME/IRU or GPS required.
- NOTE: RNAV 1.
- NOTE: Radar required for non-GPS equipped aircraft.
- NOTE: Transponder code will be issued via PDC or Atlanta clearance delivery.
- NOTE: Aircraft at Midfield Ramps will advise Ramp Towers of Departure SID prior to pushback. Upon receipt of ATC clearance (from ATL Clearance Delivery), read back only your call sign and transponder code, unless you have a question.
- NOTE: Accelerate to 250K, if unable, advise ATC.

NOTE: Chart not to scale.

(NARRATIVE ON FOLLOWING PAGE)

SE-4, 07 FEB 2013 to 07 MAR 2013