

ILS PRM RWY 9R (SIMULTANEOUS CLOSE PARALLEL)

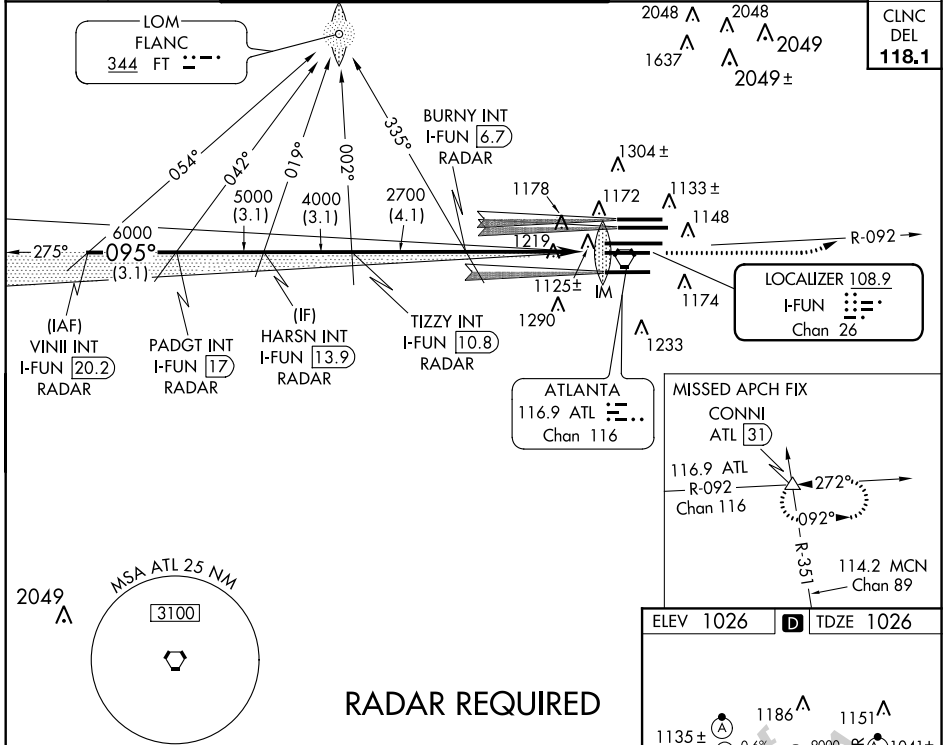
ATLANTA/HARTSFIELD-JACKSON ATLANTA INTL (ATL)

LOC/DME I-FUN 108.9 Chan 26	APP CRS 095°	Rwy Idg TDZE 1026 Apt Elev 1026	9000
-------------------------------------------------	------------------------	-----------------------------------------------------	-------------

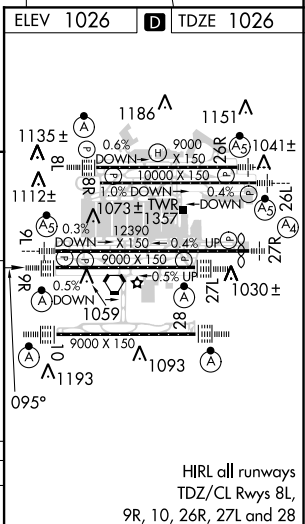
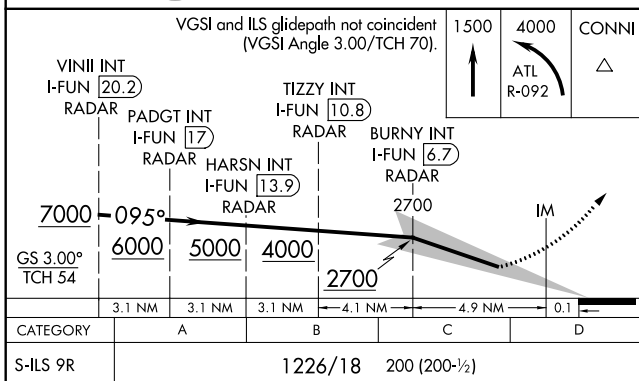
Simultaneous close parallel approach authorized with ILS PRM Rwy 8L or 8R and Rwy 10. Procedure not authorized when glideslope not available. Dual VHF comm required. See additional requirements on AAUP. ADF or DME or Radar required.

MISSED APPROACH: Climb to 1500 then climbing left turn to 4000 on ATL VORTAC R-092 to CONNI INT/ATL 31 DME and hold.

ATIS ARR 119.65 DEP 125.55	ATLANTA APP CON 127.9 379.9	ATLANTA TOWER 8L-26R 8R-26L 9L-27R 9R-27L 10-28 RWYS 119.1 125.325 123.85 119.3 119.5 254.4 PRM 132.55	ALL RWYS 121.9 121.75 121.65 254.4	GND CON 10-28 RWYS 121.9 121.75 121.65 254.4
------------------------------------------------	------------------------------------------	-------------------------------------------------------------------------------------------------------------------------------	-------------------------------------------------	-----------------------------------------------------------



RADAR REQUIRED



ILS PRM RWY 9R (SIMULTANEOUS CLOSE PARALLEL)

SE-4, 07 FEB 2013 to 07 MAR 2013

SE-4, 07 FEB 2013 to 07 MAR 2013