


# ILS PRM RWY 9L

## (SIMULTANEOUS CLOSE PARALLEL)

ATLANTA/ HARTSFIELD-JACKSON ATLANTA INTL (ATL)

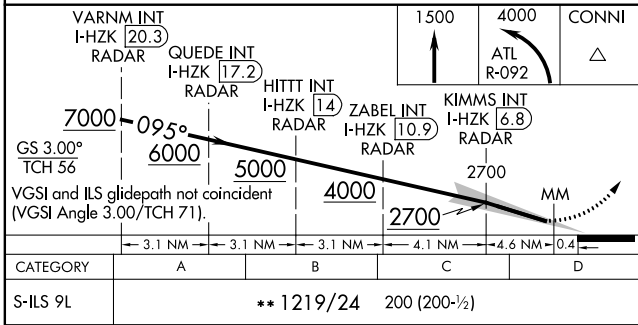
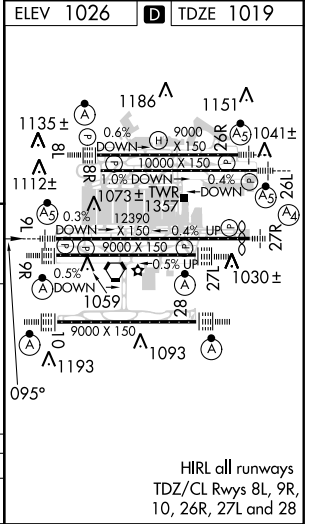
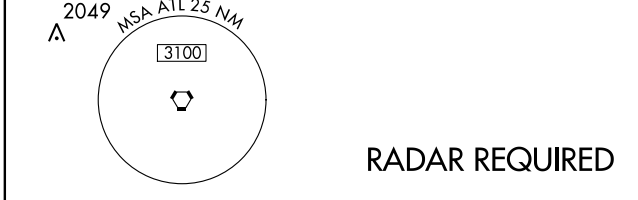
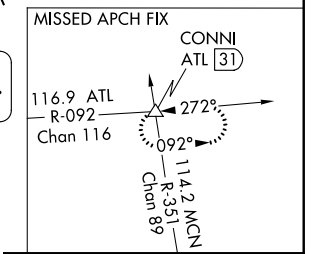
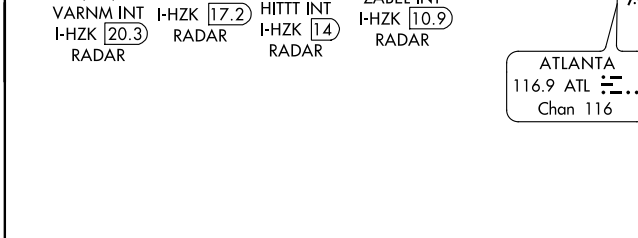
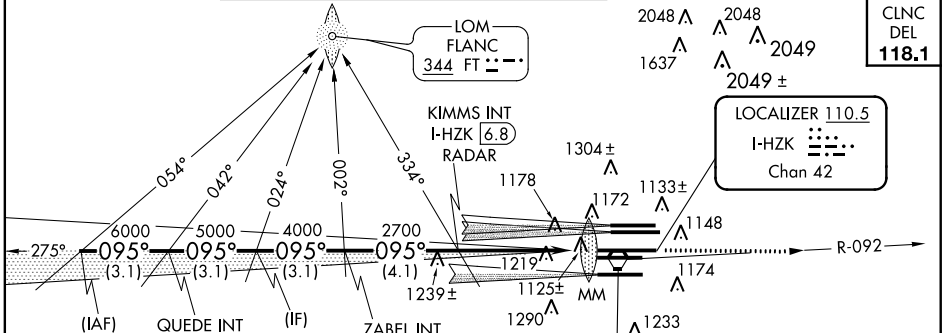
LOC/DME I-HZK <b>110.5</b> Chan <b>42</b>	APP CRS <b>095°</b>	Rwy Idg <b>11730</b> TDZE <b>1019</b> Apt Elev <b>1026</b>
---	------------------------	--

Simultaneous close parallel approach authorized with ILS PRM Rwy 8L or 8R and Rwy 10. Procedure not authorized when glideslope not available. Dual VHF comm required. See additional requirements on AAUP. ADF or DME or Radar Required.  
 \*\* RVR 1800 authorized with the use of FD or AP or HUD to DA.

MALSR 

MISSED APPROACH: Climb to 1500 then climbing left turn to 4000 on ATL VORTAC R-092 to CONNI INT/ATL 31 DME and hold.

ATIS ARR <b>119.65</b> DEP <b>125.55</b>	ATLANTA APP CON <b>127.9 379.9</b>	ATLANTA TOWER ALL 8L-26R 8R-26L 9L-27R 9R-27L 10-28 RWYS <b>119.1 125.325 123.85 119.3 119.5 254.4</b> <b>PRM 132.55</b>	GND CON ALL (8L-26R,8R-26L) (9L-27R,9R-27L) 10-28 RWYS <b>121.9 121.75 121.65 254.4</b>
--	---------------------------------------	---	---



SE-4, 07 FEB 2013 to 07 MAR 2013

SE-4, 07 FEB 2013 to 07 MAR 2013