

ILS PRM RWY 8R

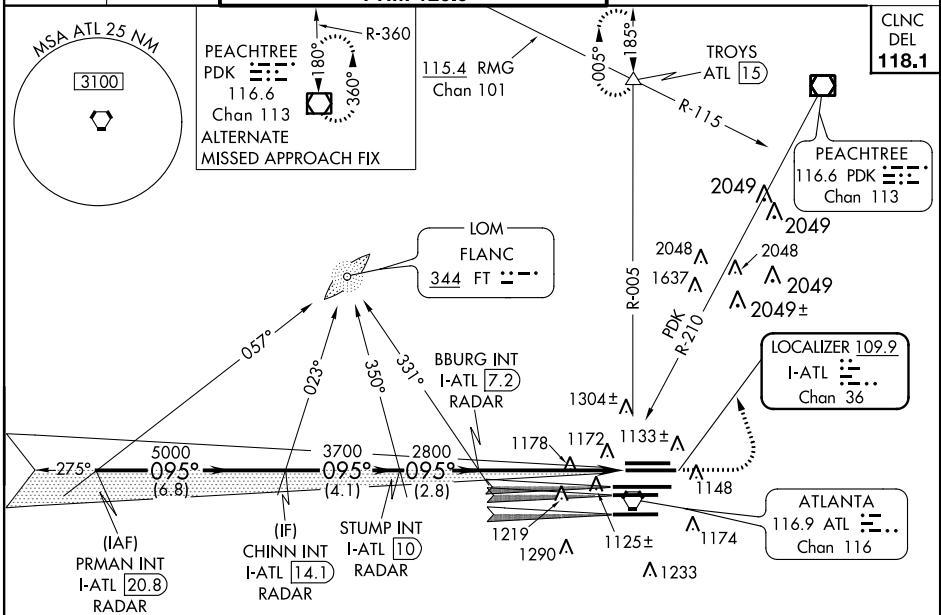
(SIMULTANEOUS CLOSE PARALLEL)
ATLANTA/ HARTSFIELD-JACKSON ATLANTA INTL (ATL)

LOC/DME I-ATL 109.9 Chan 36	APP CRS 095°	Rwy Idg 10000 TDZE 1024 Apt Elev 1026
-------------------------------------------------	------------------------	------------------------------------------------------------------

Simultaneous close parallel approach authorized with ILS PRM Rwy 9L or Rwy 9R or Rwy 10. Procedure NA when glide slope not available. Dual VHF comm required. See additional requirements on AAUP. ADF or DME or radar required.

MISSED APPROACH: Climb to 1500 then climbing left turn to 3500 on ATL VORTAC R-005 to TROYS INT/ATL 15 DME and hold.

ATIS ARR 119.65 DEP 125.55	ATLANTA APP CON 127.9 379.9	ATLANTA TOWER ALL 8L-26R 8R-26L 9L-27R 9R-27L 10-28 RWYS 119.1 125.325 123.85 119.3 119.5 254.4 PRM 126.9	GND CON ALL (8L-26R,8R-26L) (9L-27R,9R-27L) 10-28 RWYS 121.9 121.75 121.65 254.4
------------------------------------------------	---------------------------------------	----------------------------------------------------------------------------------------------------------------------------------	-----------------------------------------------------------------------------------------------



SE-4, 07 FEB 2013 to 07 MAR 2013

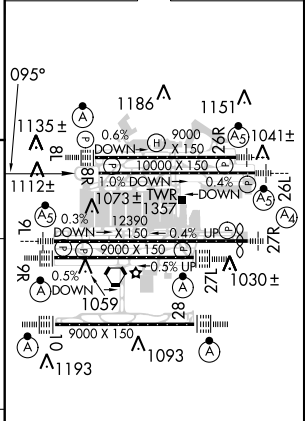
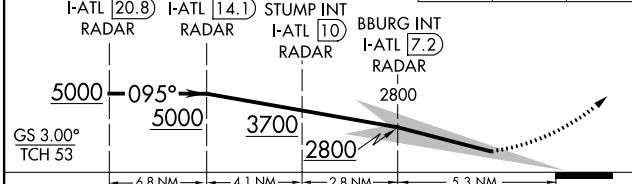
SE-4, 07 FEB 2013 to 07 MAR 2013

ELEV 1026	TDZE 1024
-----------	-----------

RADAR REQUIRED

VGSI and ILS glidepath not coincident, (VGSI Angle 3.00/TCH 67).

1500	3500	TROYS
↑	ATL R-005	△



CATEGORY	A	B	C	D	E
S-ILS 8R			1281/40	257 (300-¾)	

HIRL all runways
TDZ/CL Rwy 8L, 9R, 10, 26R, 27L and 28

ILS PRM RWY 8R (SIMULTANEOUS CLOSE PARALLEL)