

ATLANTA, GEORGIA

AL-26 (FAA)

13010
ILS PRM RWY 8L (CAT III)

LOC/DME I-HFW 109.3 Chan 30	APP CRS 095°	Rwy Idg TDZE Apt Elev	8800 1015 1026
---	------------------------	-----------------------------	---

(SIMULTANEOUS CLOSE PARALLEL)
ATLANTA/HARTSFIELD-JACKSON ATLANTA INTL (ATL)

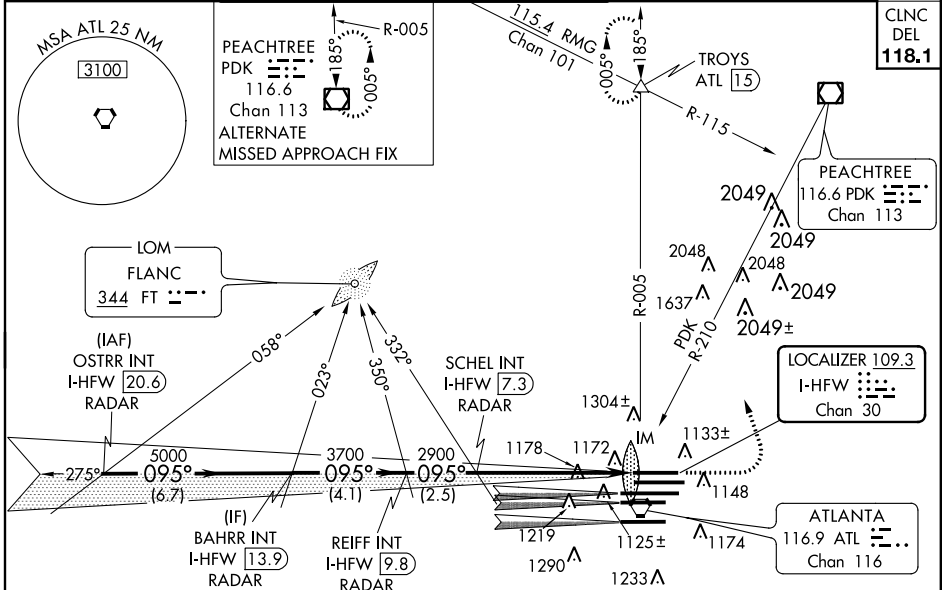
Simultaneous close parallel approach authorized with ILS PRM Rwy 9L or 9R or Rwy 10. Procedure not authorized when glide slope not available. Dual VHF comm required. See additional requirements on AAUP. ADF or DME or Radar Required.

ALSF-2



MISSED APPROACH: Climb to 1500 then climbing left turn to 3500 on ATL VORTAC R-005 to TROYS INT/ATL 15 DME and hold.

ATIS ARR 119.65 DEP 125.55	ATLANTA APP CON 127.9 379.9	ATLANTA TOWER 8L-26R 8R-26L 9L-27R 9R-27L 10-28 119.1 125.325 123.85 119.3 119.5 254.4 PRM 126.9	ALL RWYS 121.9 121.75 121.65 254.4	GND CON (8L-26R,8R-26L) (9L-27R,9R-27L) 10-28 121.9 121.75 121.65 254.4	ALL RWYS
--	--	---	---	--	-------------

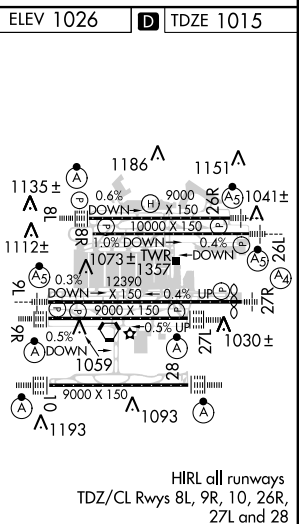


SE-4, 07 FEB 2013 to 07 MAR 2013

SE-4, 07 FEB 2013 to 07 MAR 2013

RADAR REQUIRED

VGSi and ILS glidepath not coincident (VGSi Angle 3.00/TCH 70).		1500	3500	TROYS
OSTRR INT I-HFW 20.6 RADAR	BAHRR INT I-HFW 13.9 RADAR	REIFF INT I-HFW 9.8 RADAR	SCHEL INT I-HFW 7.3 RADAR	ATL R-005
5000	3700	2900	1115	1015 MSL
GS 3.00° TCH 59	6.7 NM	4.1 NM	2.5 NM	5.6 NM
CATEGORY	A	B	C	D
S-ILS 8L		CAT IIIa	RVR 07	
S-ILS 8L		CAT IIIb	RVR 06	
S-ILS 8L		CAT IIIc	NA	



CATEGORY III ILS - SPECIAL AIRCREW & AIRCRAFT CERTIFICATION REQUIRED

ATLANTA, GEORGIA
Orig-D 15NOV12

33°38'N-84°26'W

ATLANTA/HARTSFIELD-JACKSON ATLANTA INTL (ATL)

ILS PRM RWY 8L (CAT III) (SIMULTANEOUS CLOSE PARALLEL)