

ATLANTA, GEORGIA

AL-26 (FAA)

ILS PRM RWY 8L (CAT II)

(SIMULTANEOUS CLOSE PARALLEL)

ATLANTA/ HARTSFIELD-JACKSON ATLANTA INTL (ATL)

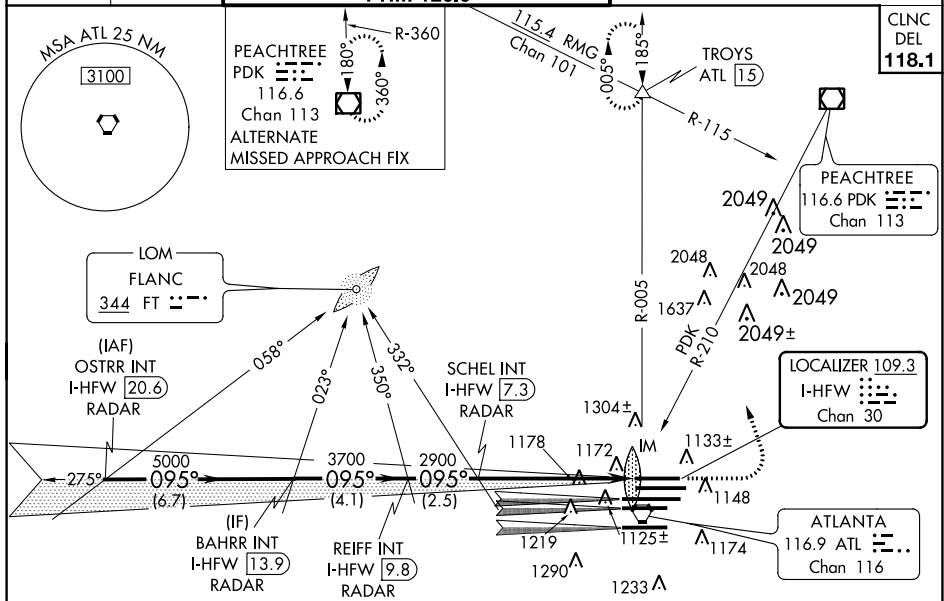
LOC/DME I-HFW 109.3 Chan 30	APP CRS 095°	Rwy Idg TDZE Apt Elev	8800 1015 1026
---	------------------------	-----------------------------	---

Simultaneous close parallel approach authorized with ILS PRM Rwy 9L or 9R or Rwy 10. Procedure not authorized when glide slope not available. Dual VHF comm required. See additional requirements on AAUP. ADF or DME or Radar Required.



MISSED APPROACH: Climb to 1500 then climbing left turn to 3500 on ATL VORTAC R-005 to TROYS INT/ATL 15 DME and hold.

ATIS ARR 119.65 DEP 125.55	ATLANTA APP CON 127.9 379.9	ATLANTA TOWER 8L-26R 8R-26L 9L-27R 9R-27L 10-28 RWYS 119.1 125.325 123.85 119.3 119.5 254.4 PRM 126.9	ALL RWYS 254.4	GND CON (8L-26R,8R-26L) (9L-27R,9R-27L) 10-28 121.9 121.75 121.65 254.4	ALL RWYS 254.4
--	--	--	-----------------------------	--	-----------------------------

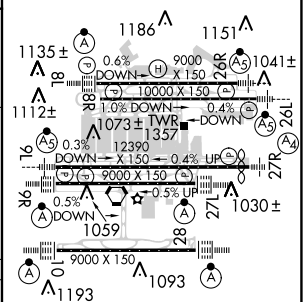
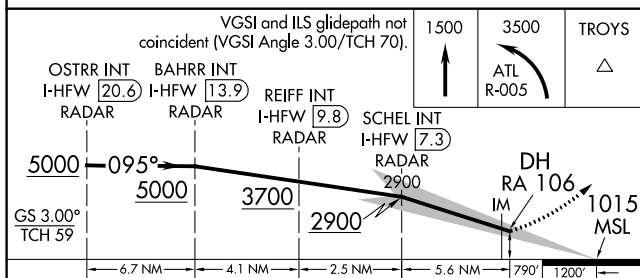


SE-4, 07 FEB 2013 to 07 MAR 2013

SE-4, 07 FEB 2013 to 07 MAR 2013

ELEV 1026	TDZE 1015
-----------	-----------

RADAR REQUIRED



CATEGORY	A	B	C	D
S-ILS 8L	RA 106/12 100 DA 1115			

CATEGORY II ILS - SPECIAL AIRCREW & AIRCRAFT CERTIFICATION REQUIRED

HIRL all runways
TDZ/CL Rwy 8L, 9R, 10, 26R, 27L and 28

ATLANTA, GEORGIA
Orig-D 15NOV12

33°38'N-84°26'W

ATLANTA/ HARTSFIELD-JACKSON ATLANTA INTL (ATL)

ILS PRM RWY 8L (CAT II) (SIMULTANEOUS CLOSE PARALLEL)