

ATLANTA, GEORGIA

AL-26 (FAA)

ILS PRM RWY 28 (CAT II)

(SIMULTANEOUS CLOSE PARALLEL)

ATLANTA/HARTSFIELD-JACKSON ATLANTA INTL (ATL)

LOC/DME I-PKU 111.75 Chan 54 (Y)	APP CRS 275°	Rwy Ldg THRE Apt Elev	9000 998 1026
--	------------------------	-----------------------------	--

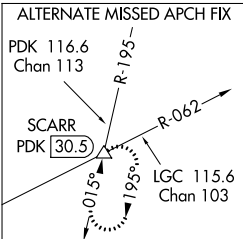
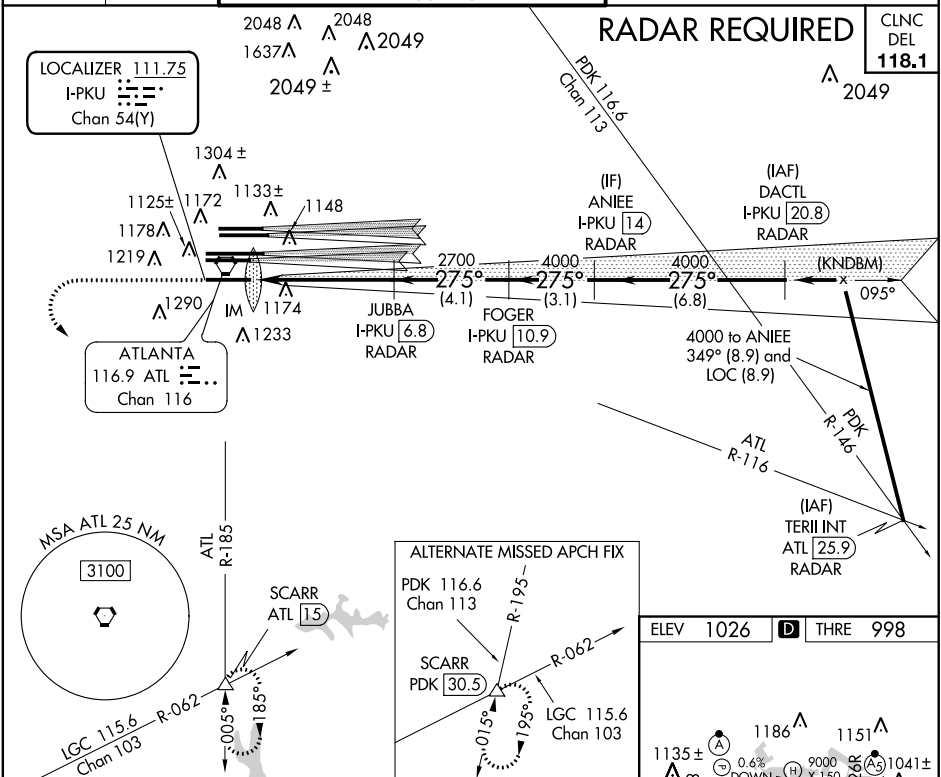
▼ DME or Radar required. Simultaneous close parallel approach authorized with ILS PRM Rwy 27R or 27L and 26L or 26R. Procedure not authorized when glideslope not available. Dual VHF comm required. See additional requirements on AAUP.



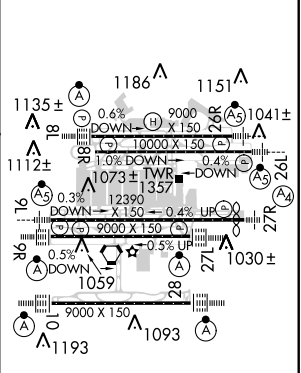
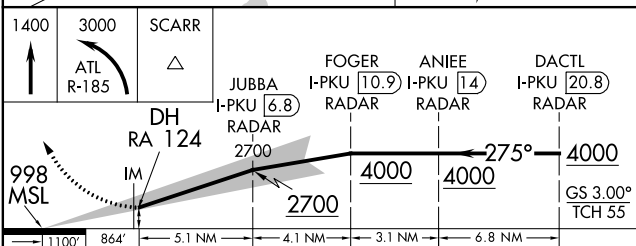
MISSING APPROACH: Climb to 1400 then climbing left turn to 3000 on ATL VORTAC R-185 to SCARR INT/ATL 15 DME and hold.

ATIS ARR 119.65 DEP 125.55	ATLANTA APP CON 127.9 379.9	ATLANTA TOWER 8L-26R 8R-26L 9L-27R 9R-27L 119.1 125.325 123.85 119.3 119.5 254.4 PRM 133.425	ALL RWYS 10-28 254.4
--	--	---	-----------------------------------

GND CON 121.9 121.75 121.65 254.4	ALL RWYS 10-28 254.4
---	-----------------------------------



ELEV 1026	THRE 998
-----------	----------



CATEGORY	A	B	C	D
S-ILS 28	RA 124/12		100 DA 1098	
CATEGORY II ILS - SPECIAL AIRCREW & AIRCRAFT CERTIFICATION REQUIRED				

HIRL all runways
TDZ/CL Rwy 8L, 9R,
10, 26R, 27L and 28

SE-4, 07 FEB 2013 to 07 MAR 2013

SE-4, 07 FEB 2013 to 07 MAR 2013