

ATLANTA, GEORGIA

AL-26 (FAA)

ILS PRM RWY 28

(SIMULTANEOUS CLOSE PARALLEL)

ATLANTA/ HARTSFIELD-JACKSON ATLANTA INTL (ATL)

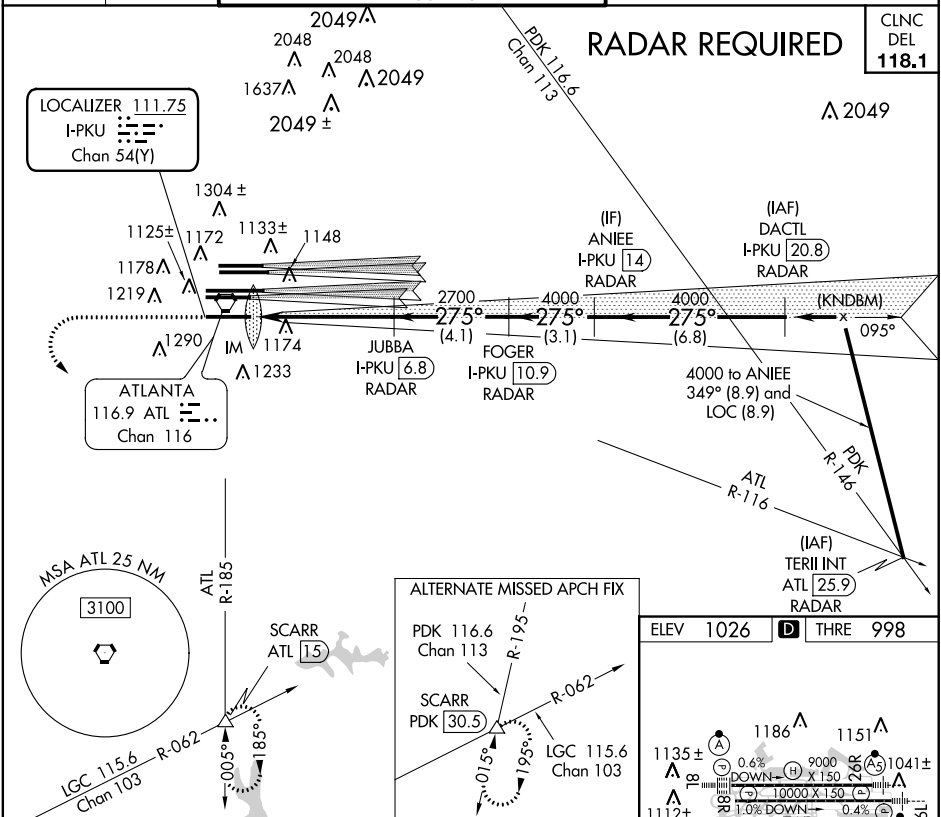
LOC/DME I-PKU 111.75	APP CRS 275°	Rwy Ldg 9000
Chan 54 (Y)		THRE 998
		Apt Elev 1026

▼ DME or Radar required. Simultaneous close parallel approach authorized with ILS PRM Rwy 27R or 27L and 26L or 26R. Procedure not authorized when glide slope not available. Dual VHF comm required. See additional requirements on AAUP.

ALSIF-2

MISSED APPROACH: Climb to 1400 then climbing left turn to 3000 on ATL VORTAC R-185 to SCARR INT/ATL 15 DME and hold.

ATIS ARR 119.65 DEP 125.55	ATLANTA APP CON 127.9 379.9	ATLANTA TOWER 8L-26R 8R-26L 9L-27R 9R-27L 119.1 125.325 123.85 119.3 119.5 254.4 PRM 133.425	ALL 10-28 RWYS 119.5 254.4	GND CON (8L-26R,8R-26L) (9L-27R,9R-27L) 10-28 121.9 121.75 121.65 254.4	ALL RWYS 121.9 121.75 121.65 254.4
--	--	---	---	--	---



SE-4, 07 FEB 2013 to 07 MAR 2013

SE-4, 07 FEB 2013 to 07 MAR 2013

