

ATLANTA, GEORGIA

AL-26 (FAA)

ILS PRM RWY 27L (CAT II)

(SIMULTANEOUS CLOSE PARALLEL)

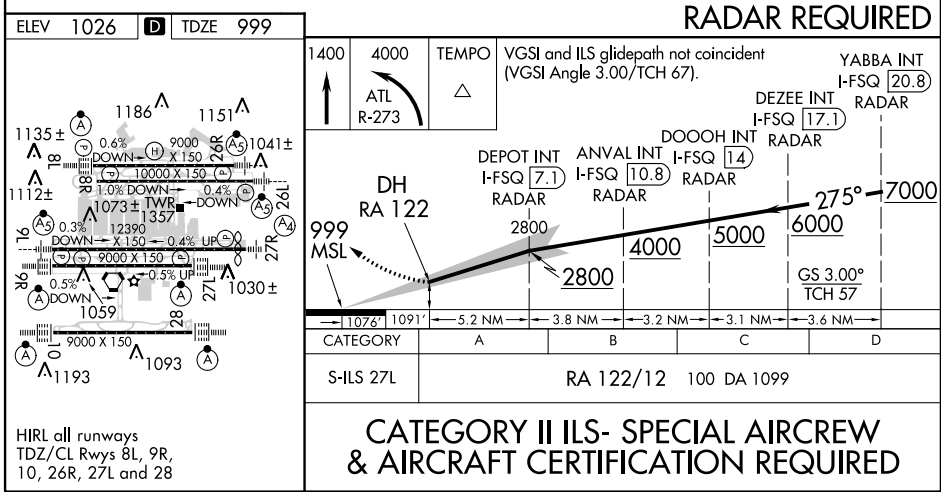
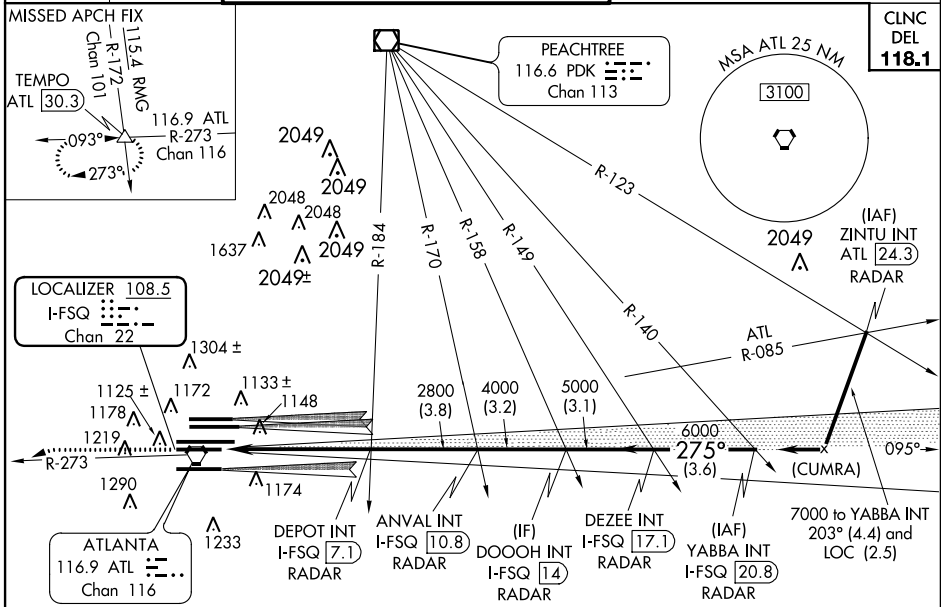
ATLANTA/HARTSFIELD-JACKSON ATLANTA INTL (ATL)

LOC/DME I-FSQ 108.5 Chan 22	APP CRS 275°	Rwy Idg TDZE Apt Elev	8865 999 1026
---	------------------------	-----------------------------	--

Simultaneous close parallel approach authorized with ILS PRM Rwy 26L or 26R and 28. Procedure not authorized when glide slope not available. Dual VHF comm required. See additional requirements on AAUP.

ALSF-2
MISSED APPROACH: Climb to 1400 then climbing left turn to 4000 on ATL VORTAC R-273 to TEMPO INT/ATL 30.3 DME and hold.

ATIS ARR 119.65 DEP 125.55	ATLANTA APP CON 127.9 379.9	ATLANTA TOWER 8L-26R 8R-26L 9L-27R 9R-27L 10-28 RWYS 119.1 125.325 123.85 119.3 119.5 254.4 PRM 132.55	ALL RWYS (8L-26R,8R-26L) (9L-27R,9R-27L) 10-28 RWYS 121.9 121.75 121.65 254.4	GND CON 121.9 121.75 121.65 254.4
--	--	---	---	---



HIRL all runways
TDZ/CL Rwy's 8L, 9R, 10, 26R, 27L and 28

ATLANTA, GEORGIA Amdt 1B 15NOV12 33°38'N-84°26'W ATLANTA/HARTSFIELD-JACKSON ATLANTA INTL (ATL)

ILS PRM RWY 27L (CAT II) (SIMULTANEOUS CLOSE PARALLEL)

SE-4, 07 FEB 2013 to 07 MAR 2013

SE-4, 07 FEB 2013 to 07 MAR 2013