

ATLANTA, GEORGIA

AL-26 (FAA)

ILS PRM RWY 27L

(SIMULTANEOUS CLOSE PARALLEL)

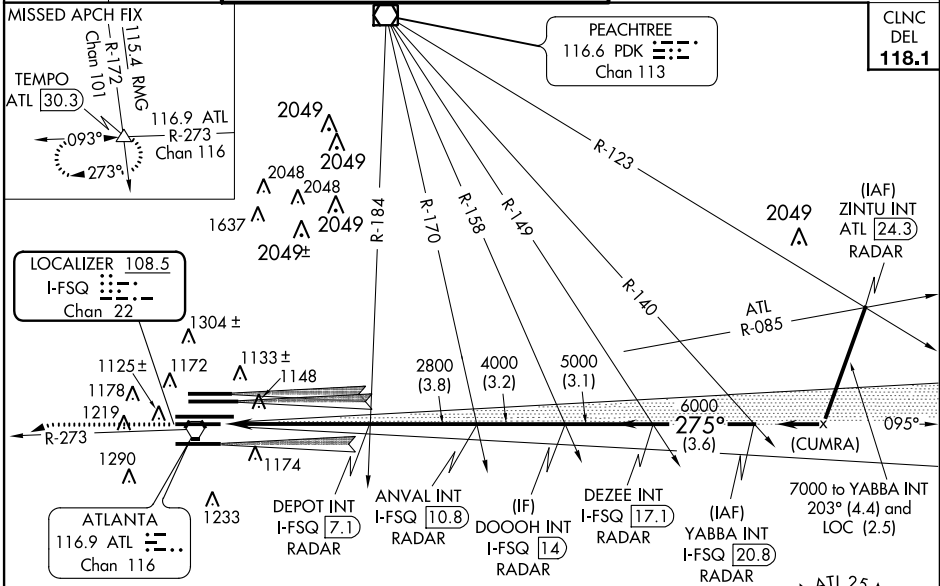
ATLANTA/ HARTSFIELD-JACKSON ATLANTA INTL (ATL)

LOC/DME I-FSQ 108.5 Chan 22	APP CRS 275°	Rwy Idg TDZE Apt Elev	8865 999 1026
---	------------------------	-----------------------------	--

Simultaneous close parallel approach authorized with ILS PRM Rwy 26L or 26R and 28. Procedure not authorized when glide slope not available. Dual VHF comm required. See additional requirements on AAPP.

ALSF-2
MISSED APPROACH: Climb to 1400 then climbing left turn to 4000 on ATL VORTAC R-273 to TEMPO INT/ATL 30.3 DME and hold.

ATIS ARR 119.65 DEP 125.55	ATLANTA APP CON 127.9 379.9	ATLANTA TOWER 8L-26R 8R-26L 9L-27R 9R-27L 10-28 RWYS 119.1 125.325 123.85 119.3 119.5 254.4 PRM 132.55	ALL RWYS (8L-26R,8R-26L) (9L-27R,9R-27L) 10-28 121.9 121.75 121.65 254.4	GND CON 121.75 121.65 254.4	ALL RWYS
--	---------------------------------------	---	---	---------------------------------------	----------



SE-4, 07 FEB 2013 to 07 MAR 2013

SE-4, 07 FEB 2013 to 07 MAR 2013

ELEV 1026 TDZE 999

HIRL all runways
TDZ/CL Rwy 8L, 9R, 10, 26R, 27L and 28

RADAR REQUIRED

1400	4000	TEMPO	VGSI and ILS glidepath not coincident (VGSI Angle 3.00/TCH 67).	YABBA INT I-FSQ [20.8] RADAR
↑	ATL R-273	△		DEZEE INT I-FSQ [17.1] RADAR
				DEPOT INT I-FSQ [7.1] RADAR
				ANVAL INT I-FSQ [10.8] RADAR
				DOOOH INT I-FSQ [14] RADAR

7000
275°
2800 4000 5000 6000
GS 3.00° TCH 57

CATEGORY	A	B	C	D
S-ILS 27L	1199/18 200 (200-1/2)			

ATLANTA, GEORGIA Amdt 1B 15NOV12

33°38'N-84°26'W

ATLANTA/ HARTSFIELD-JACKSON ATLANTA INTL (ATL)

ILS PRM RWY 27L (SIMULTANEOUS CLOSE PARALLEL)