

ATLANTA, GEORGIA

AL-26 (FAA)

13010

ILS PRM RWY 26R (SA CAT I)

(SIMULTANEOUS CLOSE PARALLEL)

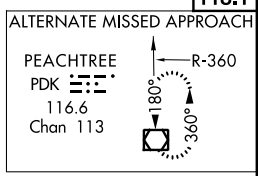
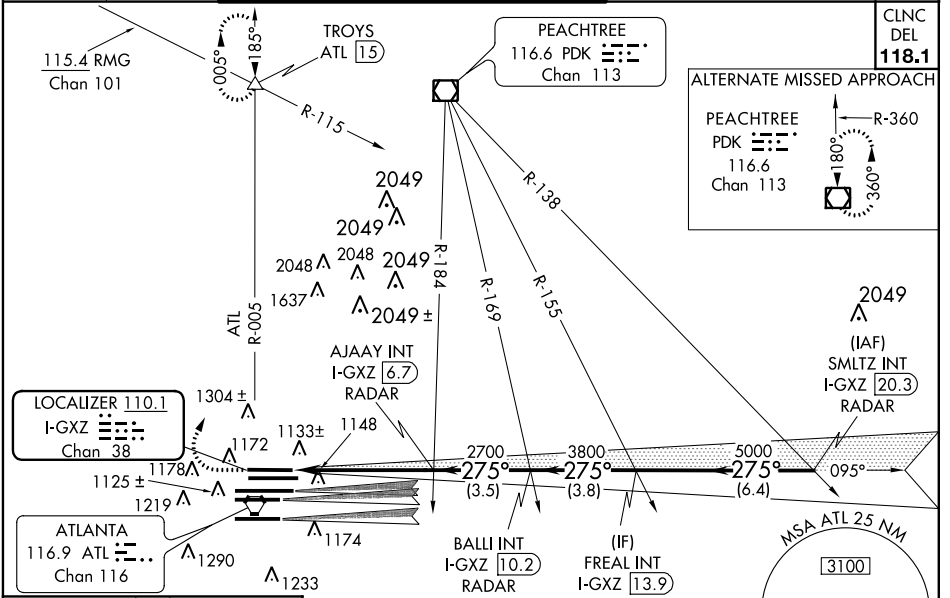
ATLANTA/HARTSFIELD-JACKSON ATLANTA INTL (ATL)

LOC/DME I-GXZ 110.1 Chan 38	APP CRS 275°	Rwy Idg TDZE Apt Elev	8800 990 1026
---	------------------------	-----------------------------	--

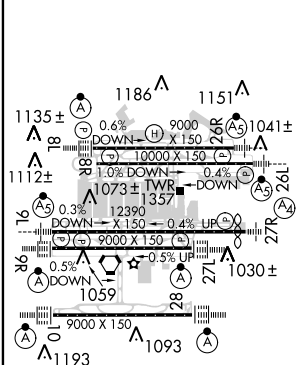
Simultaneous close parallel approach authorized with ILS PRM Rwy 27L or 27R or 28. Procedure not authorized when glideslope not available. Dual VHF comm required. See additional requirements on AAUP. Requires specific OPSPEC, MSPSPEC, or LOA approval and use of HUD to DH.

MALSRR
MISSED APPROACH: Climb to 1400 then climbing right turn to 3500 on ATL VORTAC R-005 to TROYS/ATL 15 DME and hold.

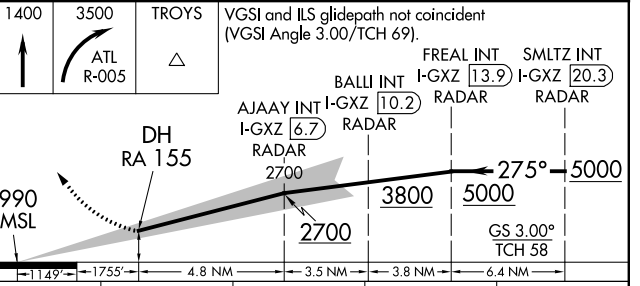
ATIS ARR 119.65 DEP 125.55	ATLANTA APP CON 127.9 379.9	ATLANTA TOWER 8L-26R 8R-26L 9L-27R 9R-27L 10-28 RWYS 119.1 125.325 123.85 119.3 119.5 254.4 PRM 126.9	ALL RWYS 121.9	GND CON (8L-26R,8R-26L) (9L-27R,9R-27L) 10-28 RWYS 121.75 121.65 254.4	ALL RWYS 118.1
--	--	--	-----------------------------	---	-----------------------------



ELEV 1026	D	TDZE 990
------------------	----------	-----------------



RADAR REQUIRED



CATEGORY	A	B	C	D
S-ILS 26R	RA 155/14 150 DA 1140			

SA CATEGORY I ILS - SPECIAL AIRCREW & AIRCRAFT CERTIFICATION REQUIRED

ATLANTA, GEORGIA 33°38'N-84°26'W ATLANTA/HARTSFIELD-JACKSON ATLANTA INTL (ATL)

ILS PRM RWY 26R (SA CAT I) (SIMULTANEOUS CLOSE PARALLEL)

SE-4, 07 FEB 2013 to 07 MAR 2013

SE-4, 07 FEB 2013 to 07 MAR 2013