

ATLANTA, GEORGIA

AL-26 (FAA)

ILS PRM RWY 26R

(SIMULTANEOUS CLOSE PARALLEL)

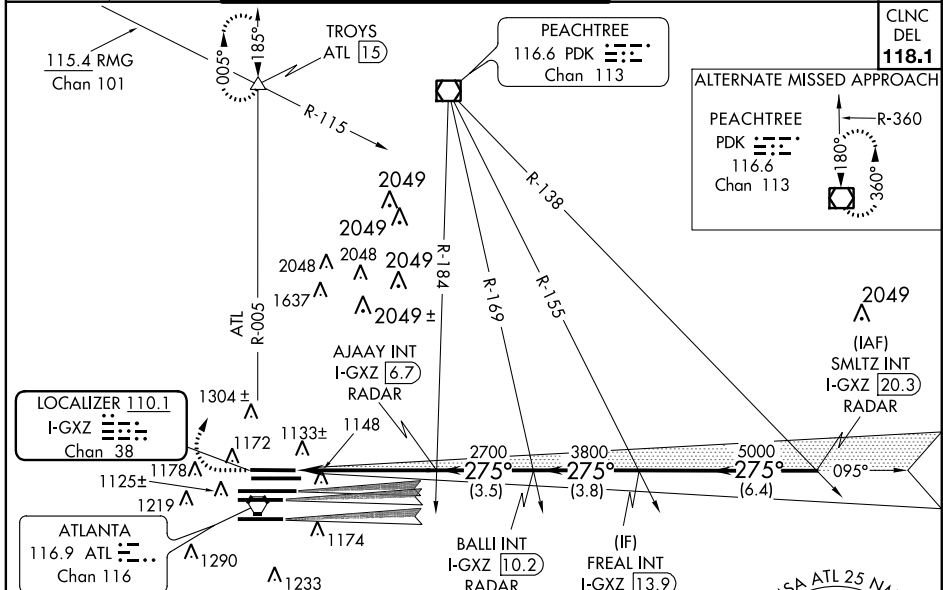
ATLANTA/ HARTSFIELD-JACKSON ATLANTA INTL (ATL)

LOC/DME I-GXZ <b>110.1</b> Chan <b>38</b>	APP CRS <b>275°</b>	Rwy ldg TDZE Apt Elev	<b>8800</b> <b>990</b> <b>1026</b>
---	------------------------	-----------------------------	--

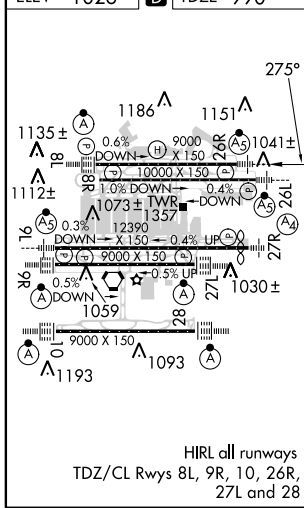
Simultaneous close parallel approach authorized with ILS PRM Rwy 27L or 27R or 28. Procedure not authorized when glideslope not available. Dual VHF comm required. See additional requirements on AAUP.

**MALSR**  
MISSED APPROACH: Climb to 1400 then climbing right turn to 3500 on ATL VORTAC R-005 to TROYS/ATL 15 DME and hold.

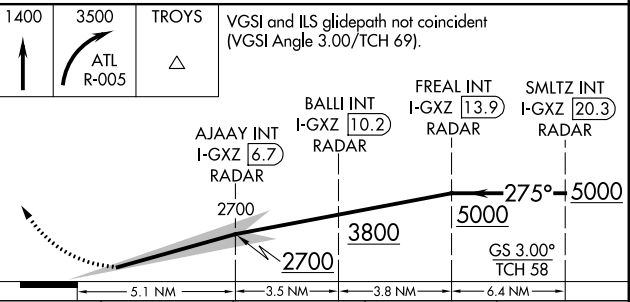
ATIS ARR <b>119.65</b> DEP <b>125.55</b>	ATLANTA APP CON <b>127.9 379.9</b>	ATLANTA TOWER 8L-26R 8R-26L 9L-27R 9R-27L 10-28 <b>119.1 125.325 123.85 119.3 119.5 254.4</b> PRM <b>126.9</b>	ALL RWYS <b>254.4</b>	GND CON (8L-26R,8R-26L) (9L-27R,9R-27L) 10-28 <b>121.9 121.75 121.65 254.4</b>	ALL RWYS <b>254.4</b>
--	--	---	-----------------------------	--	-----------------------------



ELEV <b>1026</b>	<b>D</b>	TDZE <b>990</b>
------------------	----------	-----------------



**RADAR REQUIRED**



CATEGORY	A	B	C	D
S-ILS 26R		1190/18	200 (200-1/2)	

ATLANTA, GEORGIA 33°38'N-84°26'W ATLANTA/ HARTSFIELD-JACKSON ATLANTA INTL (ATL)

**ILS PRM RWY 26R (SIMULTANEOUS CLOSE PARALLEL)**

SE-4, 07 FEB 2013 to 07 MAR 2013

SE-4, 07 FEB 2013 to 07 MAR 2013