

ATLANTA, GEORGIA

AL-26 (FAA)

ILS PRM RWY 26L

LOC/DME I-BRU 108.7 Chan 24	APP CRS 275°	Rwy Idg 10000 TDZE 995 Apt Elev 1026
--	------------------------	---

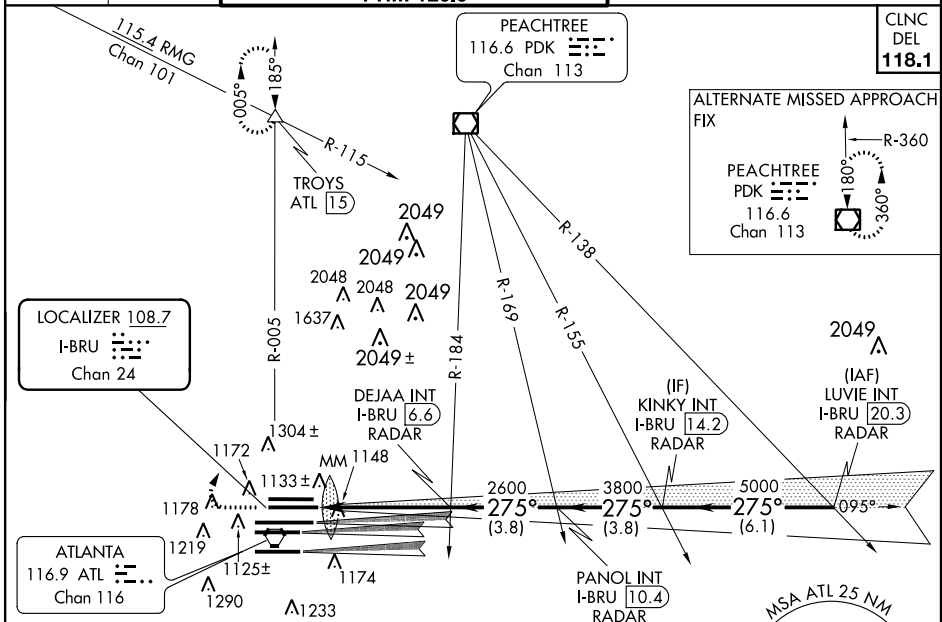
(SIMULTANEOUS CLOSE PARALLEL)

ATLANTA/HARTSFIELD-JACKSON ATLANTA INTL (ATL)

Simultaneous close parallel approach authorized with ILS PRM Rwy 27L or 27R or Rwy 28. Procedure NA when glideslope not available. Dual VHF comm required. See additional requirements on AAUP. For inoperative MALSR increase S-ILS 26L visibility all Cats to RVR 5000.

MALSR MISSED APPROACH: Climb to 1500 then climbing right turn to 3500 on ATL VORTAC R-005 to TROYS INT/ATL 15 DME and hold.

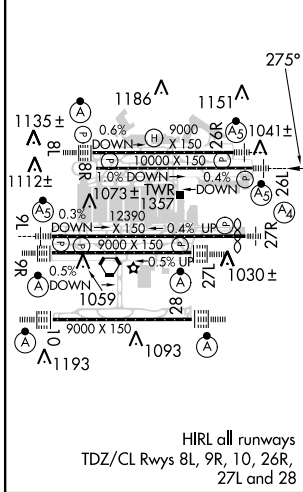
ATIS ARR 119.65 DEP 125.55	ATLANTA APP CON 127.9 379.9	ATLANTA TOWER 8L-26R 8R-26L 9L-27R 9R-27L 10-28 RWYS 119.1 125.325 123.85 119.3 119.5 254.4 PRM 126.9	ALL RWYS (8L-26R,8R-26L) (9L-27R,9R-27L) 10-28 RWYS 121.9 121.75 121.65 254.4	GND CON 121.9 121.75 121.65 254.4
--	--	--	--	---



SE-4, 07 FEB 2013 to 07 MAR 2013

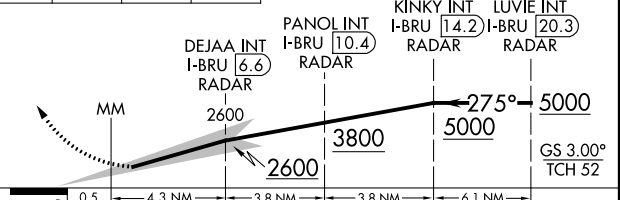
SE-4, 07 FEB 2013 to 07 MAR 2013

ELEV 1026	D	TDZE 995
-----------	---	----------



RADAR REQUIRED

1500	3500	ATL R-005	TROYS	VGSI and ILS glidepath not coincident (VGSI Angle 3.00/TCH 63).
------	------	-----------	-------	---



CATEGORY	A	B	C	D	E
S-ILS 26L	1280/24 285 (300-1/2)				

ATLANTA, GEORGIA 33°38'N-84°26'W ATLANTA/HARTSFIELD-JACKSON ATLANTA INTL (ATL)
 Orig-C 15NOV12

ILS PRM RWY 26L (SIMULTANEOUS CLOSE PARALLEL)