

ATLANTA, GEORGIA

AL-26 (FAA)

ILS PRM RWY 10 (CAT II)

LOC/DME I-OMO <b>111.55</b> Chan <b>52 (Y)</b>	APP CRS <b>095°</b>	Rwy Idg <b>9000</b> THRE <b>1000</b> Apt Elev <b>1026</b>
--	------------------------	---

(SIMULTANEOUS CLOSE PARALLEL)  
ATLANTA/HARTSFIELD-JACKSON ATLANTA INTL (ATL)

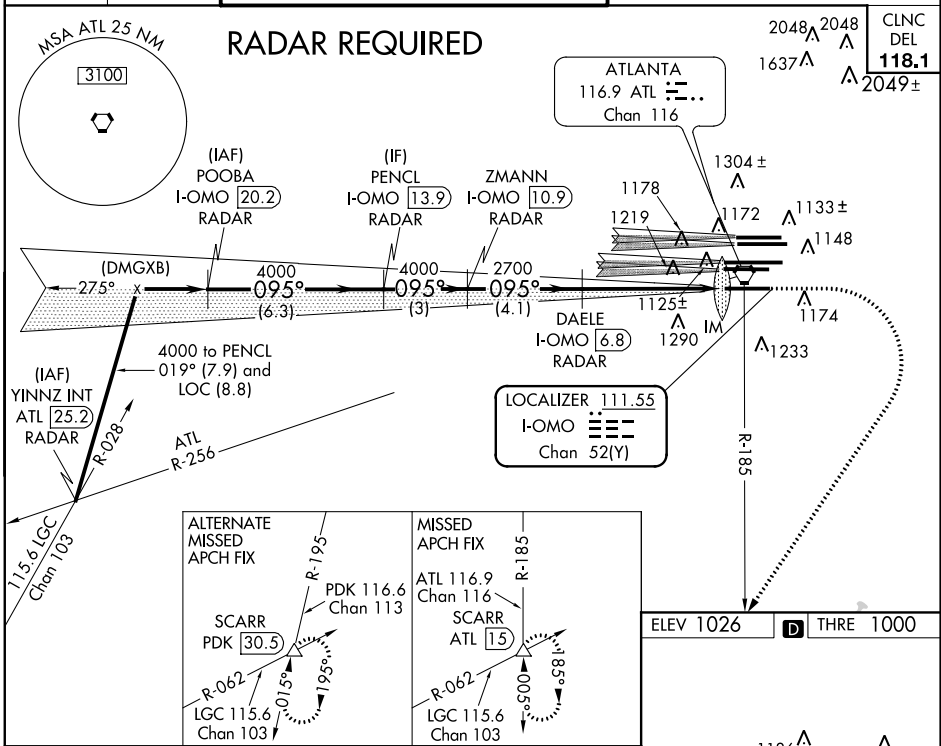
Simultaneous close parallel approach authorized with ILS PRM runway 9L or 9R and 8L or 8R. Procedure not authorized when glide slope not available. Dual VHF comm required. See additional requirements on AAUP. DME or Radar required. Localizer not suitable for electronic rollout guidance.



MISSED APPROACH: Climb to 1400 then climbing right turn to 3000 on ATL VORTAC R-180 to SCARR INT/ATL 15 DME and hold.

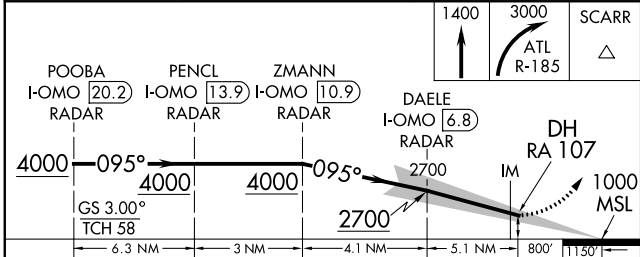
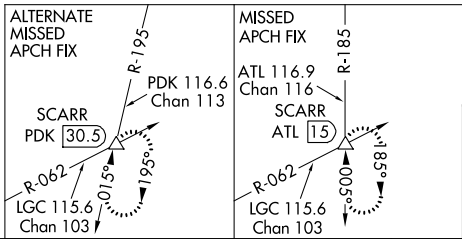
ATIS ARR <b>119.65</b> DEP <b>125.55</b>	ATLANTA APP CON <b>127.9 379.9</b>	ATLANTA TOWER 8L-26R 8R-26L 9L-27R 9R-27L 10-28 RWYS <b>119.1 125.325 123.85 119.3 119.5 254.4</b> PRM <b>133.425</b>	ALL RWYS <b>254.4</b>
--	--	--	-----------------------------

GND CON <b>121.9</b>	ALL RWYS <b>121.75 121.65 254.4</b>
-------------------------	---

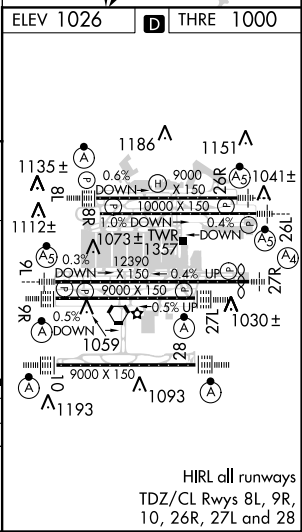


SE-4, 07 FEB 2013 to 07 MAR 2013

SE-4, 07 FEB 2013 to 07 MAR 2013



POOBA I-OMO 20.2 RADAR	PENCL I-OMO 13.9 RADAR	ZMANN I-OMO 10.9 RADAR	DAELE I-OMO 6.8 RADAR	DH RA 107	SCARR
A		B	C	D	
S-ILS 10		RA 107/12		100 DA 1100	



**CATEGORY II ILS - SPECIAL AIRCREW & AIRCRAFT CERTIFICATION REQUIRED**

HIRL all runways  
TDZ/CL Rwy's 8L, 9R, 10, 26R, 27L and 28

ATLANTA, GEORGIA  
Amdt 2A 15NOV12

33°38'N-84°26'W

ATLANTA/HARTSFIELD-JACKSON ATLANTA INTL (ATL)

ILS PRM RWY 10 (CAT II) (SIMULTANEOUS CLOSE PARALLEL)