

ATLANTA, GEORGIA

AL-26 (FAA)

ILS PRM RWY 10

(SIMULTANEOUS CLOSE PARALLEL)

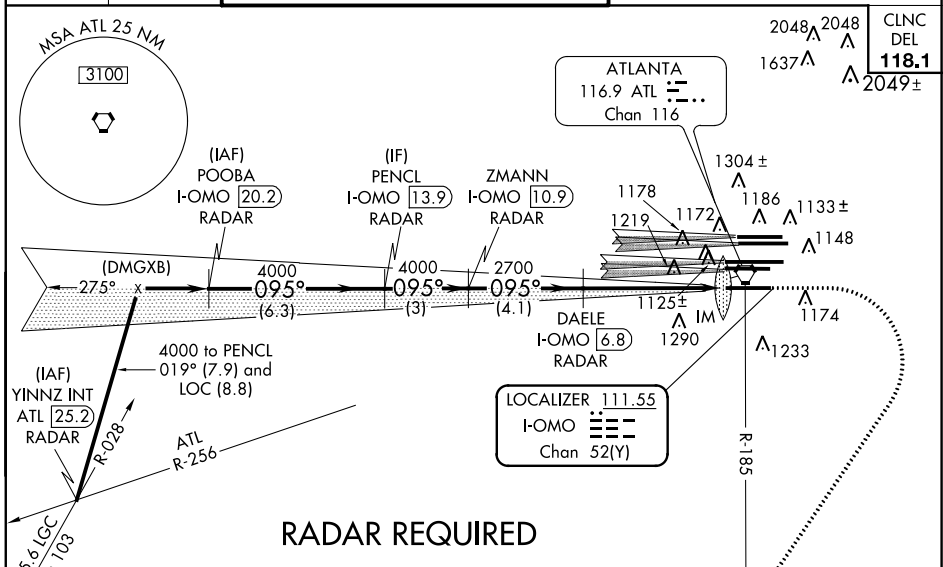
ATLANTA/ HARTSFIELD-JACKSON ATLANTA INTL (ATL)

LOC/DME I-OMO 111.55 Chan 52 (Y)	APP CRS 095°	Rwy Idg 9000 THRE 1000 Apt Elev 1026
--	------------------------	---

Simultaneous close parallel approach authorized with ILS PRM runway 9L or 9R and 8L or 8R. Procedure not authorized when glide slope not available. Dual VHF comm required. See additional requirements on AAUP. DME or Radar required. Localizer not suitable for electronic rollout guidance.

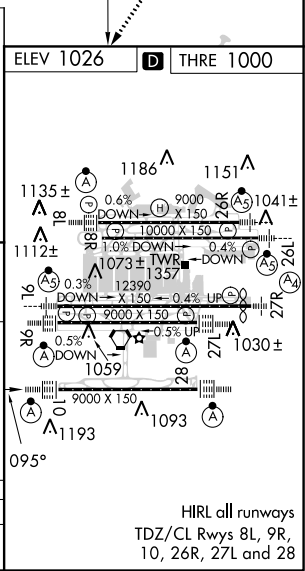
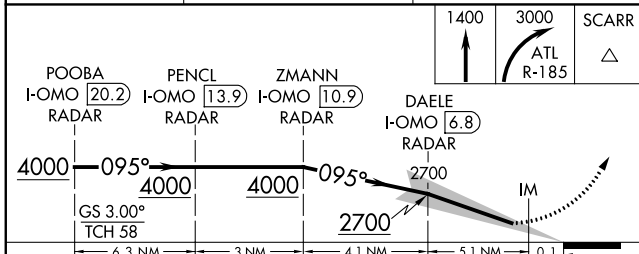
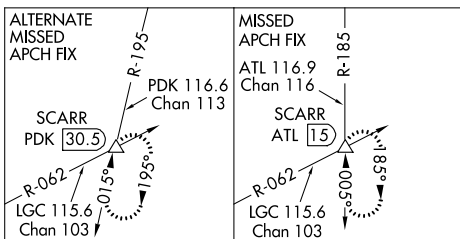
ALSF-2
MISSED APPROACH: Climb to 1400 then climbing right turn to 3000 on ATL VORTAC R-185 to SCARR INT/ATL 15 DME and hold.

ATIS ARR 119.65 DEP 125.55	ATLANTA APP CON 127.9 379.9	ATLANTA TOWER 8L-26R 8R-26L 9L-27R 9R-27L 10-28 119.1 125.325 123.85 119.3 119.5 254.4 PRM 133.425	ALL RWYs 254.4	GND CON (8L-26R,8R-26L) (9L-27R,9R-27L) 10-28 121.9 121.75 121.65 254.4	ALL RWYs
--	--	---	-----------------------------	--	-------------



SE-4, 07 FEB 2013 to 07 MAR 2013

SE-4, 07 FEB 2013 to 07 MAR 2013



CATEGORY	A	B	C	D
S-ILS 10	1200/18		200 (200-1/2)	

ATLANTA, GEORGIA
Amdt 2A 15NOV12

33°38'N-84°26'W

ATLANTA/ HARTSFIELD-JACKSON ATLANTA INTL (ATL)

ILS PRM RWY 10 (SIMULTANEOUS CLOSE PARALLEL)