

LOC/DME I-FUN 108.9 Chan 26	APP CRS 095°	Rwy Idg TDZE Apt Elev	9R 9000 1026 1026	9L 11730 1019 1026
--	------------------------	-----------------------------	---	--

ILS or LOC RWY 9R

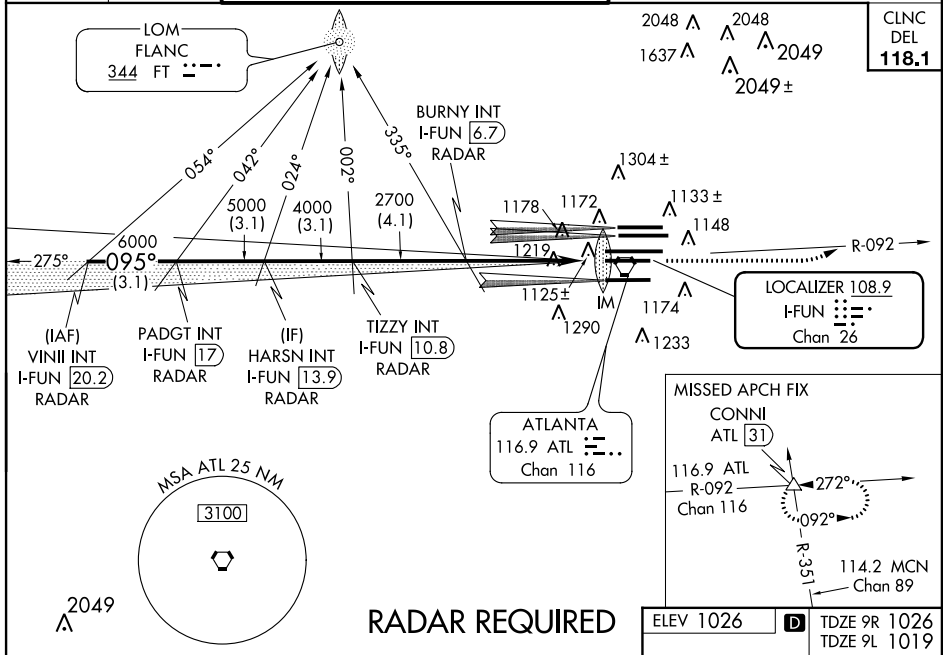
ATLANTA/HARTSFIELD-JACKSON ATLANTA INTL (ATL)

▼ Inoperative table does not apply to Sidestep 9L for Cats A and B. ADF or DME or Radar required. Simultaneous approach authorized with ILS or LOC Rwy 8L, ILS Rwy 8L (Cat II), ILS Rwy 8L (Cat III), ILS or LOC Rwy 8R, ILS Rwy 8R (Cat II), ILS Rwy 8R (Cat III), RNAV (GPS) Y Rwy 10, ILS or LOC Rwy 10, ILS Rwy 10 (SA Cat I), ILS Rwy 10 (Cat II), ILS Rwy 10 (Cat III).

Rwy 9R ALSF-2 Rwy 9L MALSR

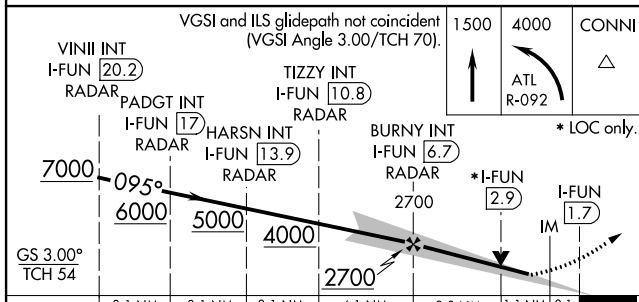
MISSED APPROACH: Climb to 1500 then climbing left turn to 4000 on ATL VORTAC R-092 to CONNI INT/ATL 31 DME and hold.

ATIS ARR 119.65 DEP 125.55	ATLANTA APP CON 127.9 379.9	ATLANTA TOWER 8L-26R 8R-26L 9L-27R 9R-27L 10-28 RWYS 119.1 125.325 123.85 119.3 119.5 254.4				ALL RWYS 121.9	GND CON (8L-26R,8R-26L) (9L-27R,9R-27L) 10-28 RWYS 121.75 121.65 254.4	ALL RWYS
--	--	--	--	--	--	-----------------------------	---	-------------



SE-4, 07 FEB 2013 to 07 MAR 2013

SE-4, 07 FEB 2013 to 07 MAR 2013



CATEGORY	A	B	C	D
S-ILS 9R	1226/18		200 (200-½)	
S-LOC 9R	1480/24	454 (500-½)	1480/40 454 (500-¾)	1480/50 454 (500-1)
SIDESTEP 9L	1480/50		461 (500-1)	461 (500-½)

