

LOC/DME I-FHW <b>109.3</b> Chan 30	APP CRS <b>095°</b>	Rwy Idg TDZE Apt Elev	8L <b>8800</b> <b>1015</b> <b>1026</b>	8R <b>10000</b> <b>1024</b> <b>1026</b>
--	------------------------	-----------------------------	---	--

# ILS or LOC RWY 8L

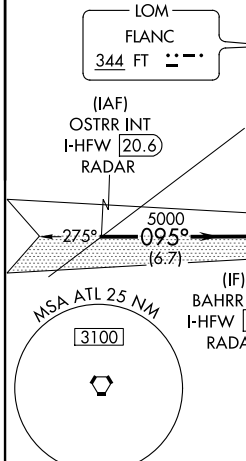
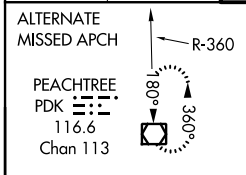
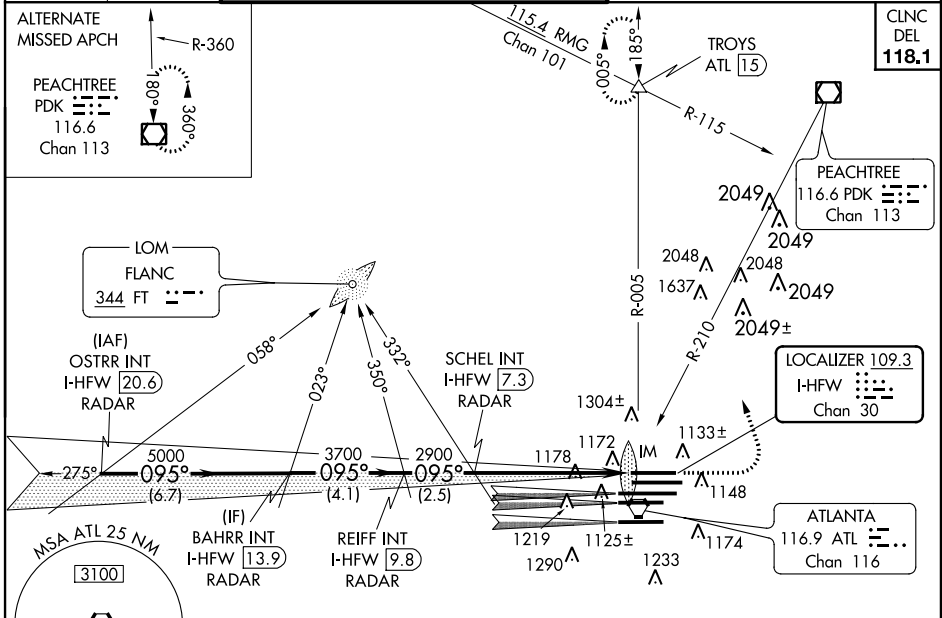
ATLANTA/HARTSFIELD-JACKSON ATLANTA INTL (ATL)

**⚠** Inoperative table does not apply to Sidestep 8R.  
Simultaneous approach authorized with Rwy 9L or 9R or 10, or Rwy 9L and 10. ADF or DME or Radar Required.

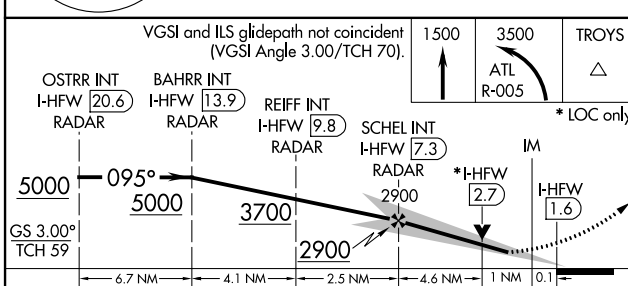
ALSF-2

MISSED APPROACH: Climb to 1500 then climbing left turn to 3500 on ATL VORTAC R-005 to TROYS INT/ATL 15 DME and hold, or as directed by ATC.

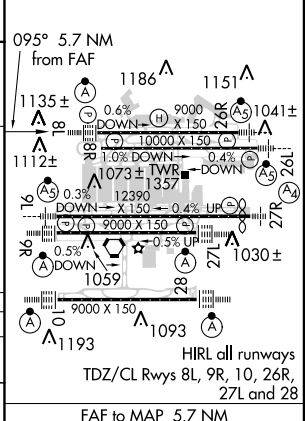
ATIS ARR <b>119.65</b>	ATLANTA APP CON DEP <b>125.55</b>	ATLANTA TOWER 8L-26R 8R-26L 9L-27R 9R-27L 10-28 RWYS <b>119.1 125.325 123.85 119.3 119.5 254.4</b>	ALL RWYS <b>121.9</b>	GND CON 8L-26R,8R-26L 9L-27R,9R-27L 10-28 RWYS <b>121.75 121.65 254.4</b>	ALL RWYS <b>118.1</b>
---------------------------	---	--	-----------------------------	---	-----------------------------



## RADAR REQUIRED



ELEV 1026	TDZE 8L 1015	TDZE 8R 1024
-----------	--------------	--------------



CATEGORY	A	B	C	D
S-ILS 8L	1215/18 200 (200-½)			
S-LOC 8L	1440/24	425 (500-½)	1440/40	425 (500-¾)
SIDESTEP 8R	1440/50	416 (500-1)	1440-1½ 416 (500-1½)	1440-2 416 (500-2)

FAF to MAP 5.7 NM					
Knots	60	90	120	150	180
Min:Sec	5:42	3:48	2:51	2:17	1:54

# ILS or LOC RWY 8L

SE-4, 07 FEB 2013 to 07 MAR 2013

SE-4, 07 FEB 2013 to 07 MAR 2013