

LOC/DME I-PKU <b>111.75</b> Chan <b>54 (Y)</b>	APP CRS <b>275°</b>	Rwy Idg <b>9000</b> THRE <b>998</b> Apt Elev <b>1026</b>
--	------------------------	---

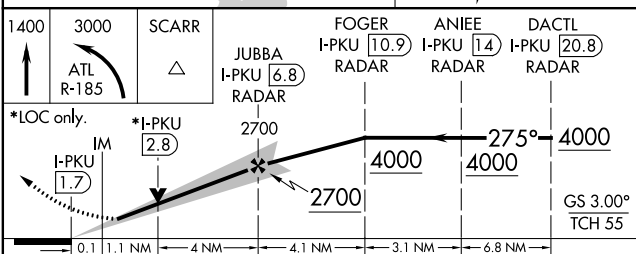
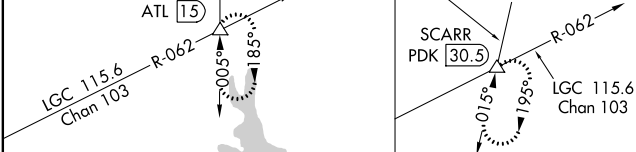
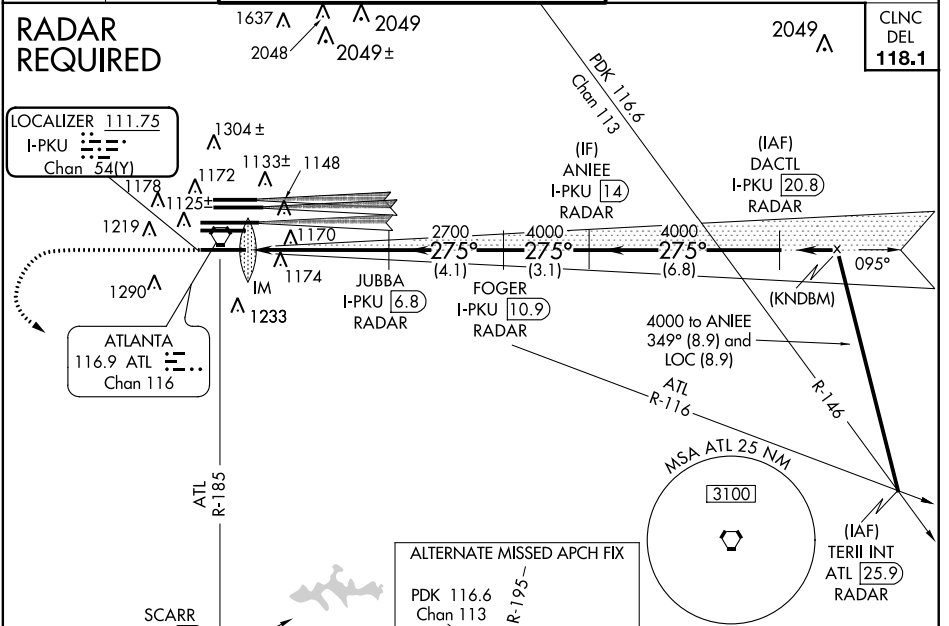
# ILS or LOC RWY 28

ATLANTA/HARTSFIELD-JACKSON ATLANTA INTL (ATL)

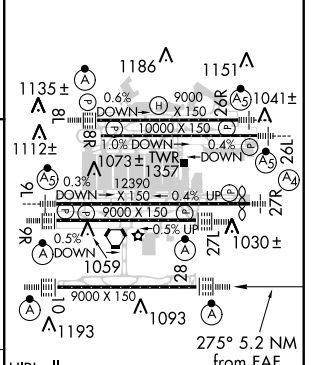
Simultaneous approach authorized with Rwy 27R or 26L or 26R, or Rwys 27R and 26R. DME or Radar required.

MISSED APPROACH: Climb to 1400 then climbing left turn to 3000 on ATL VORTAC R-185 to SCARR INT/ ATL 15 DME and hold.

ATIS ARR <b>119.65</b>	ATLANTA APP CON APP <b>127.9 379.9</b>	ATLANTA TOWER 8L-26R <b>119.1</b> 8R-26L <b>125.325</b> 9L-27R <b>123.85</b> 9R-27L <b>119.3</b> 10-28 RWYS <b>119.5 254.4</b>	ALL RWYS 121.9	GND CON 121.75	ALL RWYS 121.65 254.4
---------------------------	---	---	-------------------	-------------------	--------------------------



ELEV 1026	THRE 998
-----------	----------



CATEGORY	A	B	C	D
S-ILS 28		1198/18	200 (200-1/2)	
S-LOC 28	1420/24	422 (400-1/2)	1420/40	422 (400-3/4)

HIRL all runways TDZ/CL Rwyys 8L, 9R, 10, 26R, 27L and 28				
FAF to MAP 5.2 NM				
Knots	60	90	120	150 180
Min:Sec	5:12	3:28	2:36	2:05 1:44

SE-4, 07 FEB 2013 to 07 MAR 2013

SE-4, 07 FEB 2013 to 07 MAR 2013