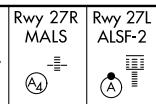


LOC I-AFA 111.3	APP CRS 275°	Rwy Idg 11690 8865 TDZE 985 999 Apt Elev 1026 1026	27R 27L
---------------------------	------------------------	--	-------------------

ILS or LOC RWY 27R

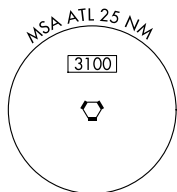
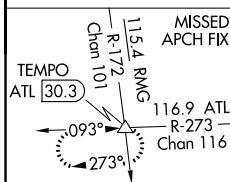
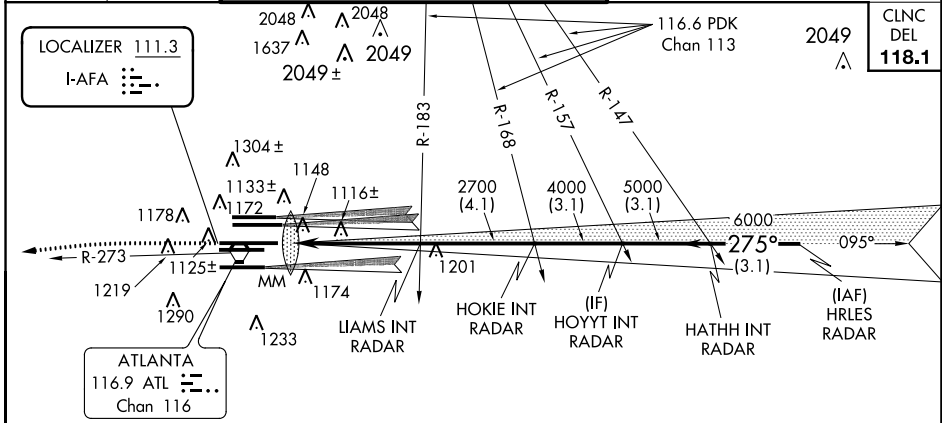
ATLANTA/HARTSFIELD-JACKSON ATLANTA INTL (ATL)

Simultaneous approach authorized with ILS or LOC Rwy 26L, ILS or LOC Rwy 26R, ILS Rwy 26R (SA Cat II), ILS Rwy 26R (SA Cat II), ILS or LOC Rwy 28, ILS Rwy 28 (Cat II), RNAV (GPS) Y Rwy 28. Inoperative table does not apply to S-LOC 27R Cat C and Sidestep 27L Cats A and B.



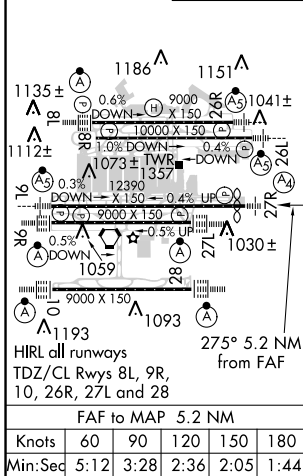
MISSED APPROACH: Climb to 1400 then climbing left turn to 4000 on ATL VORTAC R-273 to TEMPO INT/ATL 30.3 DME and hold.

ATIS ARR 119.65 DEP 125.55	ATLANTA APP CON 127.9 379.9	ATLANTA TOWER 8L-26R 8R-26L 9L-27R 9R-27L 10-28 RWYS 119.1 125.325 123.85 119.3 119.5 254.4				ALL RWYS 254.4	GND CON 8L-26R, 8R-26L (9L-27R, 9R-27L) 10-28 RWYS 121.9 121.75 121.65 254.4
--	--	--	--	--	--	-----------------------------	---



ELEV 1026	D	TDZE 27R 985 TDZE 27L 999
-----------	----------	------------------------------

RADAR REQUIRED



1400	4000	TEMPO	VGSI and ILS glidepath not coincident (VGSI Angle 3.00/TCH 72).				
↑	ATL R-273	△	LIAMS INT RADAR	HOKIE INT RADAR	HOYYT INT RADAR	HATHH INT RADAR	HRLES RADAR
			2700	4000	5000	6000	7000
			0.5	4.6 NM	4.1 NM	3.1 NM	3.1 NM
			A	B	C	D	
S-ILS 27R			1185/40 200 (200-¾)				
S-LOC 27R			1420/40	435 (400-¾)	1420/60	435 (400-¼)	1420-1½ 435 (400-1½)
SIDESTEP 27L			1420/50 421 (400-1)				1420-1½ 421 (400-1½)

SE-4, 07 FEB 2013 to 07 MAR 2013

SE-4, 07 FEB 2013 to 07 MAR 2013