

ATLANTA, GEORGIA

AL-26 (FAA)

13010

LOC/DME I-BRU 108.7 Chan 24	APP CRS 275°	Rwy Ldg 1000 8800 TDZE 995 990 Apt Elev 1026 1026
--	------------------------	---

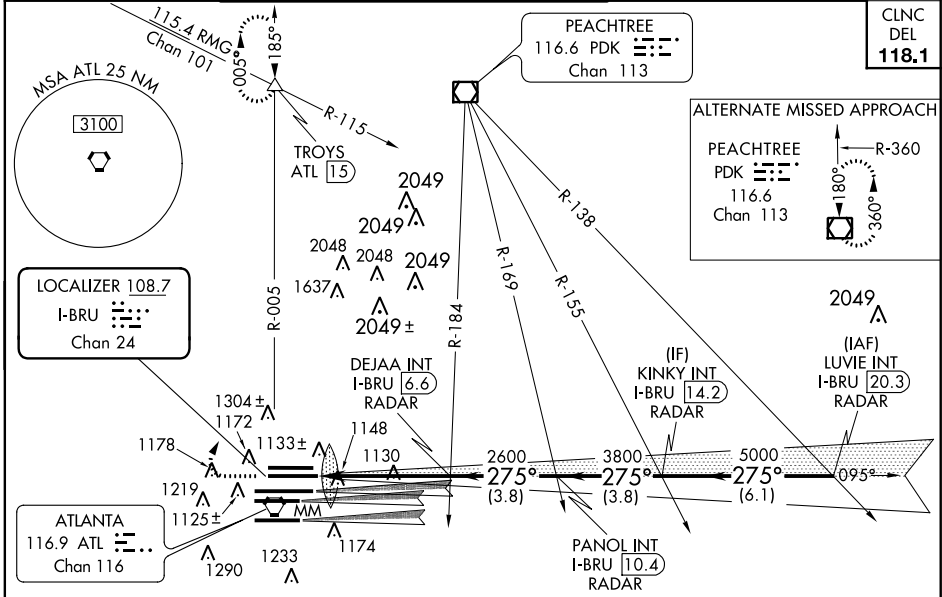
ILS or LOC RWY 26L

ATLANTA/ HARTSFIELD - JACKSON ATLANTA INTL (ATL)

▼ Inoperative table does not apply to Sidestep Rwy 26R Cats A and B. For inoperative MALS/R, increase Sidestep Rwy 26R Cat E visibility to 2. For inoperative MALS/R increase S-ILS 26L visibility all Cats to RVR 5000 and S-LOC 26L Cat E visibility to RVR 6000. Simultaneous approach authorized with Rwy 27L or 27R or 28.

Rwy 26L MALS/R 	Rwy 26R MALS/R 	MISSED APPROACH: Climb to 1500 then climbing right turn to 3500 on ATL VORTAC R-005 to TROYS INT/ATL 1.5 DME and hold.
-----------------------	-----------------------	--

ATIS ARR 119.65	ATLANTA APP CON DEP 127.9 379.9	ATLANTA TOWER 8L-26R 8R-26L 9L-27R 9R-27L 10-28 DEP 119.1 125.325 123.85 119.3 119.5 254.4	ALL RWYS (8L-26R,8R-26L) (9L-27R,9R-27L) 10-28 DEP 121.9	GND CON ALL RWYS DEP 121.75 121.65 254.4
---------------------------	--	---	---	--

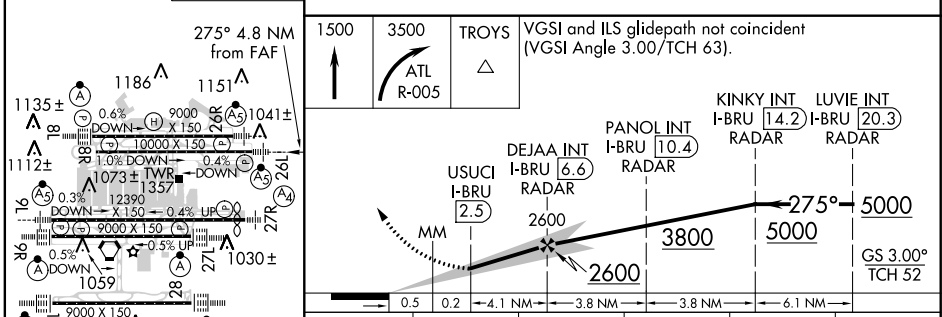


SE-4, 07 FEB 2013 to 07 MAR 2013

SE-4, 07 FEB 2013 to 07 MAR 2013

ELEV 1026	D	TDZE 26L 995 TDZE 26R 990
-----------	----------	------------------------------

RADAR REQUIRED



CATEGORY	A	B	C	D	E
S-ILS 26L	1280/24 285 (300-1/2)				
S-LOC 26L	1380/24 385 (400-1/2)		1380/40 385 (400-3/4)		
SIDESTEP 26R	1380/50 390 (400-1)		1380-1 1/2 390 (400-1 1/2)		

ATLANTA, GEORGIA
Amdt 19D 15NOV12

ATLANTA/ HARTSFIELD - JACKSON ATLANTA INTL (ATL)
33°38'N-84°26'W
ILS or LOC RWY 26L