

LOC/DME I-OMO <b>111.55</b> Chan <b>52 (Y)</b>	APP CRS <b>095°</b>	Rwy Idg <b>9000</b> THRE <b>1000</b> Apt Elev <b>1026</b>
--	------------------------	---

# ILS or LOC RWY 10

ATLANTA/ HARTSFIELD-JACKSON ATLANTA INTL (ATL)

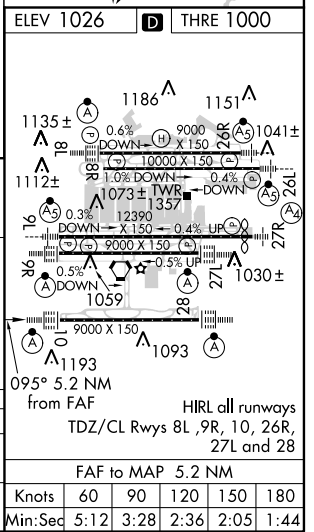
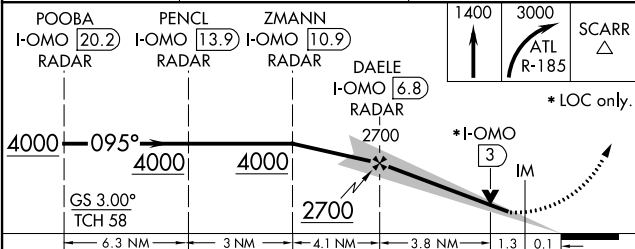
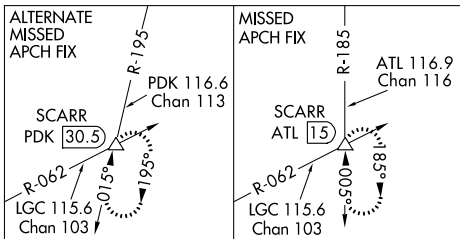
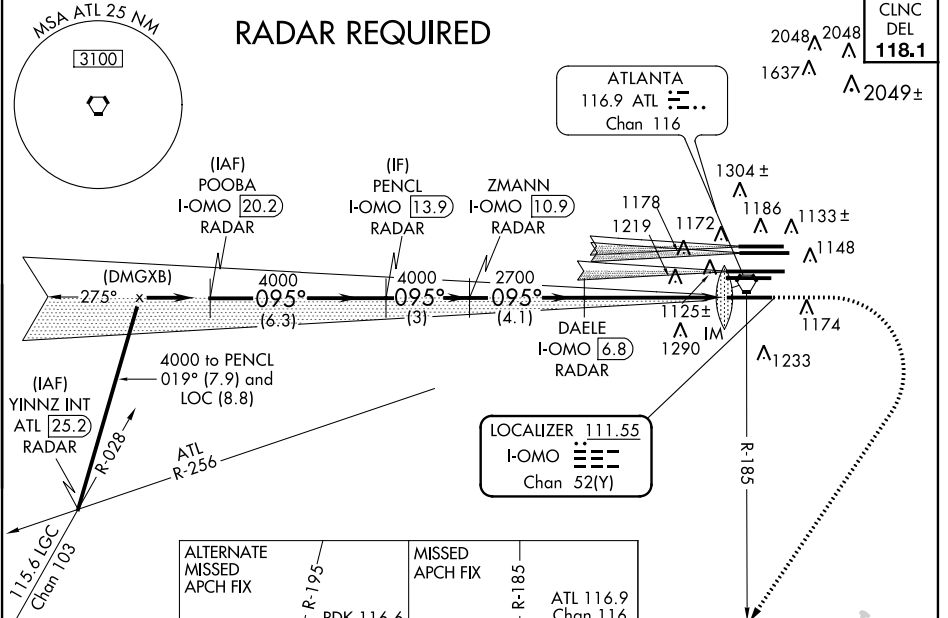
▼ For inoperative ALSF-2, increase S-LOC Cats C/D visibility to 1 3/8. Simultaneous approach authorized with Rwy 9L or 8R or 8L, or Rwys 9L and 8L. DME or Radar required. Localizer not suitable for electronic rollout guidance.

ALSF-2

MISSED APPROACH: Climb to 1400 then climbing right turn to 3000 on ATL VORTAC R-185 to SCARR INT/ATL 15 DME and hold.

ATIS ARR <b>119.65</b> DEP <b>125.55</b>	ATLANTA APP CON <b>127.9 379.9</b>	ATLANTA TOWER 8L-26R 8R-26L 9L-27R 9R-27L 10-28 RWYS <b>119.1 125.325 123.85 119.3 119.5 254.4</b>	ALL RWYS (8L-26R,8R-26L) (9L-27R,9R-27L) 10-28 RWYS <b>121.9 121.75 121.65 254.4</b>	GND CON <b>121.75 121.65 254.4</b>	ALL RWYS
--	--	--	--	---------------------------------------	-------------

## RADAR REQUIRED



SE-4, 07 FEB 2013 to 07 MAR 2013

SE-4, 07 FEB 2013 to 07 MAR 2013