

| | | | |
|--|------------------------|-----------------------------|---|
| LOC/DME I-FUN 108.9 Chan 26 | APP CRS 095° | Rwy Idg TDZE Apt Elev | 9000 1026 1026 |
|--|------------------------|-----------------------------|---|

ILS RWY 9R (CAT II)

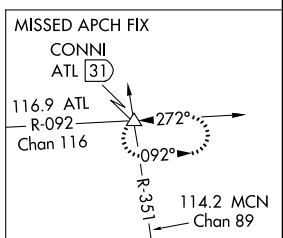
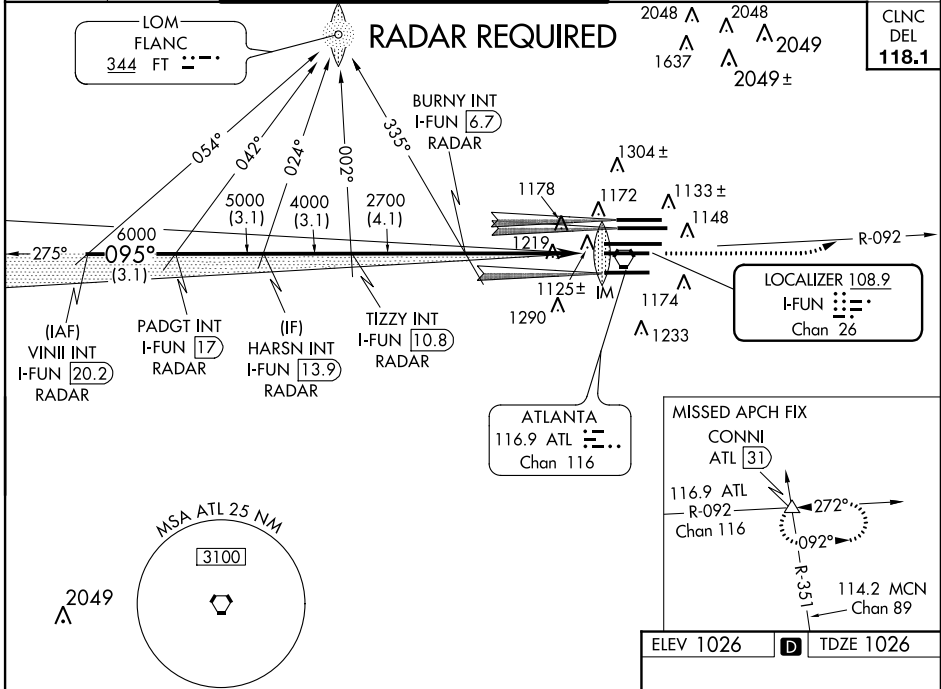
ATLANTA/HARTSFIELD-JACKSON ATLANTA INTL (ATL)

ADF or DME or Radar required. Simultaneous approach authorized with ILS or LOC Rwy 8L, ILS Rwy 8L (Cat III), ILS Rwy 8L (Cat III), ILS or LOC Rwy 8R, ILS Rwy 8R (Cat II), ILS Rwy 8R (Cat III), RNAV (GPS) Y Rwy 10, ILS or LOC Rwy 10, ILS Rwy 10 (SA Cat I), ILS Rwy 10 (Cat II), ILS Rwy 10 (Cat III).

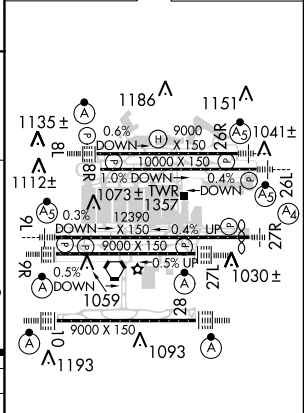
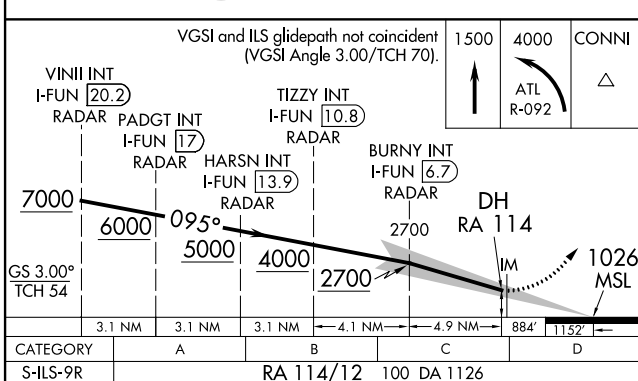


MISSED APPROACH: Climb to 1500 then climbing left turn to 4000 on ATL VORTAC R-092 to CONNI INT/ ATL 31 DME and hold.

| | | | | | |
|---------------------------|---|---|--|---|---------------------|
| ATIS ARR 119.65 | ATLANTA APP CON APP CON 127.9 379.9 | ATLANTA TOWER 8L-26R 8R-26L 9L-27R 9R-27L 10-28 RWYS | ALL RWYS (8L-26R,8R-26L) (9L-27R,9R-27L) 10-28 RWYS | GND CON 121.9 121.75 121.65 254.4 | ALL 254.4 |
|---------------------------|---|---|--|---|---------------------|



| | |
|-----------|-----------|
| ELEV 1026 | TDZE 1026 |
|-----------|-----------|



CATEGORY II ILS - SPECIAL AIRCREW & AIRCRAFT CERTIFICATION REQUIRED

HIRL all runways
TDZ/CL Rwy 8L, 9R, 10, 26R, 27L and 28

SE-4, 07 FEB 2013 to 07 MAR 2013

SE-4, 07 FEB 2013 to 07 MAR 2013