

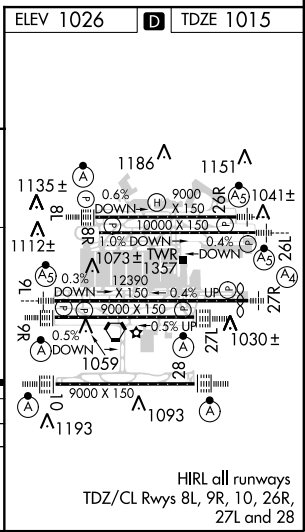
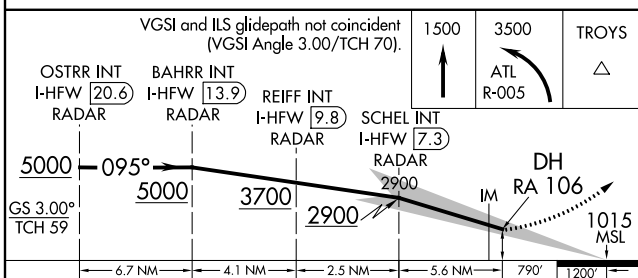
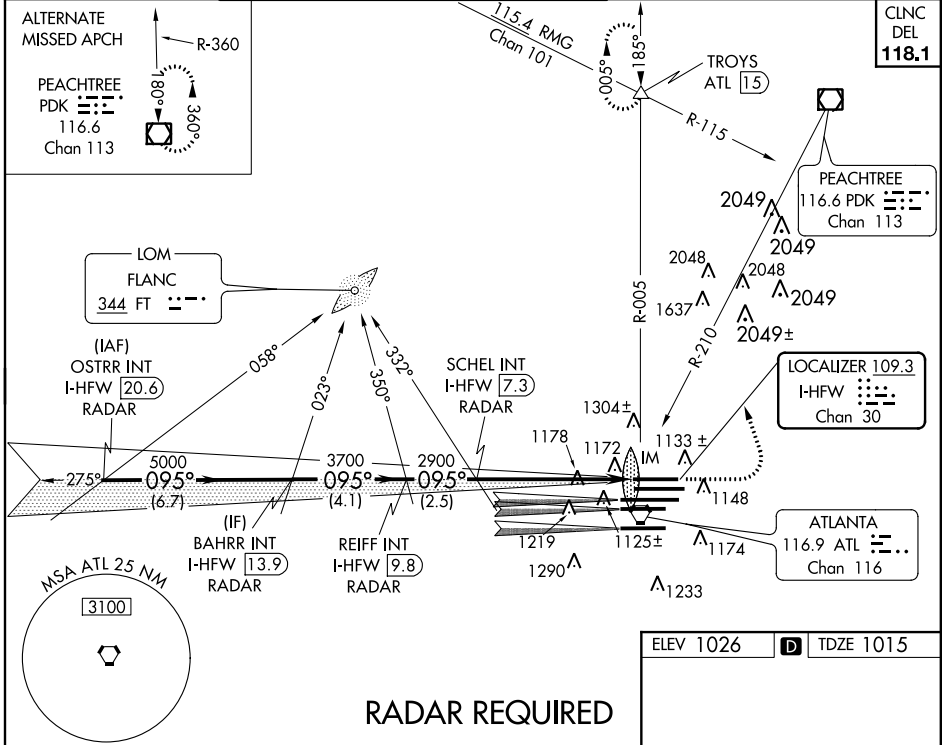
LOC/DME I-HFW 109.3 Chan 30	APP CRS 095°	Rwy Idg TDZE Apt Elev	8800 1015 1026
---	------------------------	-----------------------------	---

ILS RWY 8L (CAT II)

ATLANTA/ HARTSFIELD - JACKSON ATLANTA INTL (ATL)

▽ Simultaneous approach authorized with Rwy 9L or 9R or 10, or Rwys 9L and 10. ADF or DME or Radar Required.	ALSF-2 	MISSED APPROACH: Climb to 1500 then climbing left turn to 3500 on ATL VORTAC R-005 to TROYS INT/ATL 15 DME and hold, or as directed by ATC.
	ATIS ARR 119.65 DEP 125.55	ATLANTA APP CON 127.9 379.9

GND CON ALL RWYS 121.9	ALL RWYS (8L-26R,8R-26L) (9L-27R,9R-27L) 10-28 121.65 254.4
---	--



CATEGORY	A	B	C	D
S-ILS 8L	RA 106/12 100 DA 1115			

CATEGORY II ILS - SPECIAL AIRCREW & AIRCRAFT CERTIFICATION REQUIRED

ILS RWY 8L (CAT II)

SE-4, 07 FEB 2013 to 07 MAR 2013

SE-4, 07 FEB 2013 to 07 MAR 2013