

| | | |
|---|------------------------|---|
| LOC/DME I-PKU 111.75 Chan 54(Y) | APP CRS 275° | Rwy Idg 9000 THRE 998 Apt Elev 1026 |
|---|------------------------|---|

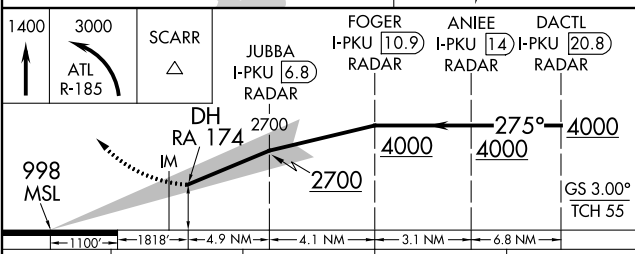
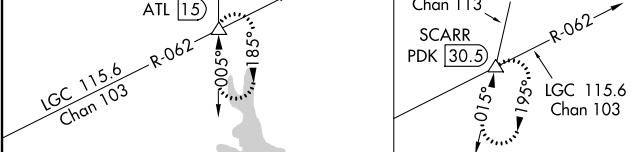
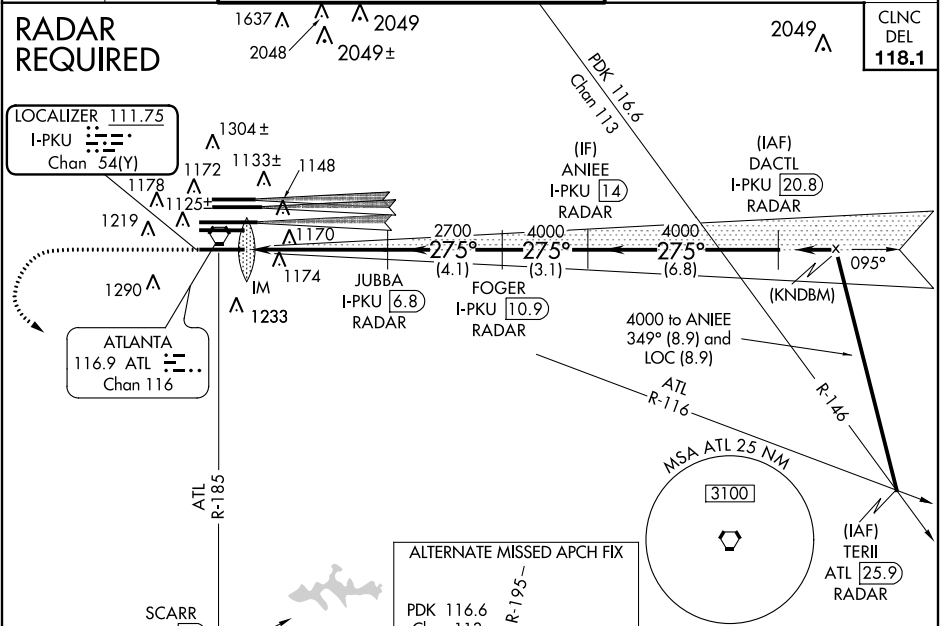
ILS RWY 28 (SA CAT I)

ATLANTA/HARTSFIELD-JACKSON ATLANTA INTL (ATL)

Simultaneous approach authorized with Rwy 27R or 26L or 26R, or Rwys 27R and 26R.
DME or Radar required.
Requires specific OPSPEC, MSPEC or LOA approval and use of HUD to DH.

ALSIF-2
MISSED APPROACH: Climb to 1400 then climbing left turn to 3000 on ATL VORTAC R-185 to SCARR INT/ ATL 15 DME and hold.

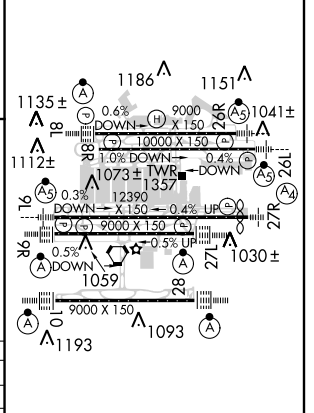
| | | | | | |
|---------------------------|---|---|--|--------------------------|---|
| ATIS ARR 119.65 | ATLANTA APP CON APP 127.9 379.9 | ATLANTA TOWER 8L-26R 119.1 8R-26L 125.325 9L-27R 123.85 9R-27L 119.3 10-28 RWYS 119.5 254.4 | ALL RWYS (8L-26R,8R-26L) (9L-27R,9R-27L) 10-28 RWYS 121.9 | GND CON 121.75 | ALL RWYS 10-28 RWYS 121.65 254.4 |
|---------------------------|---|---|--|--------------------------|---|



| | | | | |
|----------|-----------------------|---|---|---|
| CATEGORY | A | B | C | D |
| S-ILS-28 | RA 174/14 150 DA 1148 | | | |

SA CATEGORY I ILS - SPECIAL AIRCREW & AIRCRAFT CERTIFICATION REQUIRED

| | |
|-----------|----------|
| ELEV 1026 | THRE 998 |
|-----------|----------|



HIRL all runways
TDZ/CL Rwys 8L, 9R,
10, 26R, 27L and 28

SE-4, 07 FEB 2013 to 07 MAR 2013

SE-4, 07 FEB 2013 to 07 MAR 2013