

LOC/DME I-PKU 111.75 Chan 54 (Y)	APP CRS 275°	Rwy Idg 9000 THRE 998 Apt Elev 1026
--	------------------------	---

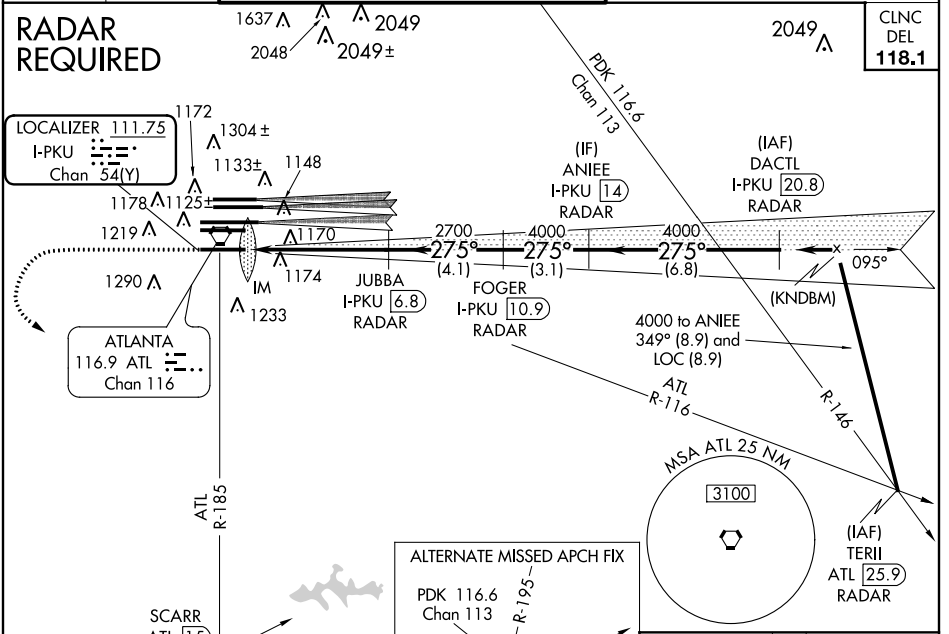
ILS RWY 28 (CAT II)

ATLANTA/HARTSFIELD-JACKSON ATLANTA INTL (ATL)

Simultaneous approach authorized with Rwy 27R or 26L or 26R, or Rwys 27R and 26R. DME or Radar required.

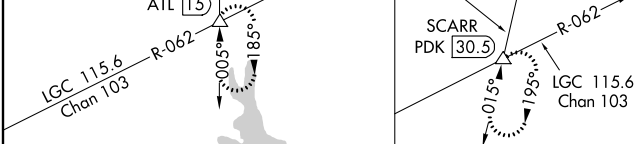
MISSED APPROACH: Climb to 1400 then climbing left turn to 3000 on ATL VORTAC R-185 to SCARR INT/ ATL 15 DME and hold.

ATIS ARR 119.65	ATLANTA APP CON 127.9 379.9	ATLANTA TOWER 8L-26R 119.1 8R-26L 125.325 9L-27R 123.85 9R-27L 119.3 10-28 RWYS 119.5 254.4	ALL RWYS 121.9	GND CON 10-28 RWYS 121.75	ALL RWYS 121.65 254.4
---------------------------	--	---	--------------------------	-------------------------------------	---------------------------------



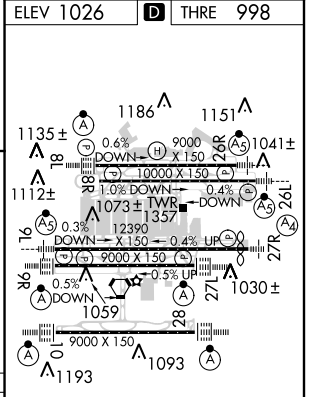
SE-4, 07 FEB 2013 to 07 MAR 2013

SE-4, 07 FEB 2013 to 07 MAR 2013



1400	3000	SCARR	JUBBA I-PKU [6.8] RADAR	FOGER I-PKU [10.9] RADAR	ANIEE I-PKU [14] RADAR	DACTL I-PKU [20.8] RADAR
998 MSL	DH RA 124 IM	2700	4000	275°	4000	4000
1100'	864'	5 NM	4.1 NM	3.1 NM	6.8 NM	
CATEGORY	A	RA 124/12		C	D	
S-ILS 28	RA 124/12					100 DA 1098

CATEGORY II ILS - SPECIAL AIRCREW & AIRCRAFT CERTIFICATION REQUIRED



HIRL all runways
TDZ/CL Rwys 8L, 9R,
10, 26R, 27L and 28