

LOC/DME I-GXZ 110.1 Chan 38	APP CRS 275°	Rwy ldg TDZE Apt Elev	8800 990 1026
--	------------------------	-----------------------------	--

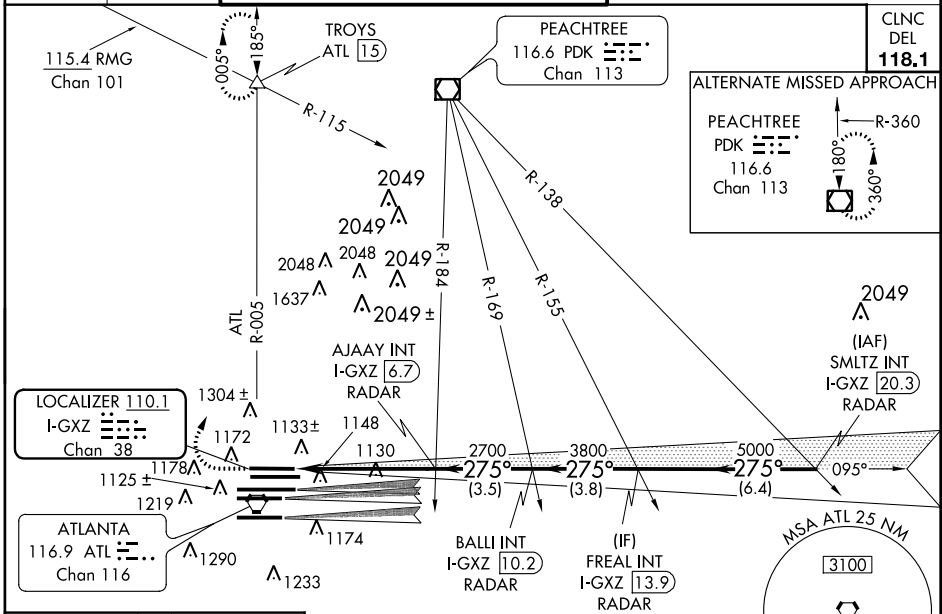
ILS RWY 26R (SA CAT II)

ATLANTA/ HARTSFIELD-JACKSON ATLANTA INTL (ATL)

Simultaneous approach authorized with Rwy 27L or 27R or 28, or Rwy 27R and 28. Reduced lighting: requires specific OPSPEC, MSPEC, or LOA approval and use of autoland or HUD to touchdown.

MALSR
 MISSED APPROACH: Climb to 1400 then climbing right turn to 3500 on ATL VORTAC R-005 to TROYS/ATL 15 DME and hold.

ATIS ARR 119.65 DEP 125.55	ATLANTA APP CON 127.9 379.9	ATLANTA TOWER 8L-26R 8R-26L 9L-27R 9R-27L 10-28 RWYS 119.1 125.325 123.85 119.3 119.5 254.4	ALL RWYS 121.9	GND CON (8L-26R,8R-26L) (9L-27R,9R-27L) 10-28 RWYS 121.75 121.65 254.4
--	---------------------------------------	--	--------------------------	---

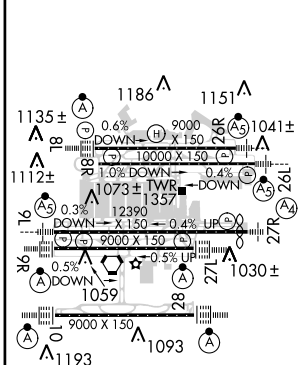


SE-4, 07 FEB 2013 to 07 MAR 2013

SE-4, 07 FEB 2013 to 07 MAR 2013

ELEV 1026	D	TDZE 990
-----------	----------	----------

RADAR REQUIRED



1400 **3500** **TROYS**

ATL R-005

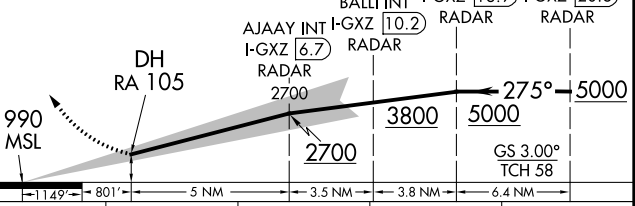
VGSI and ILS glidepath not coincident (VGSI Angle 3.00/TCH 69).

FREAL INT I-GXZ 13.9 RADAR

SMLTZ INT I-GXZ 20.3 RADAR

BALLI INT I-GXZ 10.2 RADAR

AJAAY INT I-GXZ 6.7 RADAR



CATEGORY	A	B	C	D
S-ILS 26R	RA 105/12 100 DA 1090			

SA CATEGORY II ILS - SPECIAL AIRCREW & AIRCRAFT CERTIFICATION REQUIRED

HIRL all runways
TDZ/CL Rwy 8L, 9R, 10, 26R, 27L and 28.