


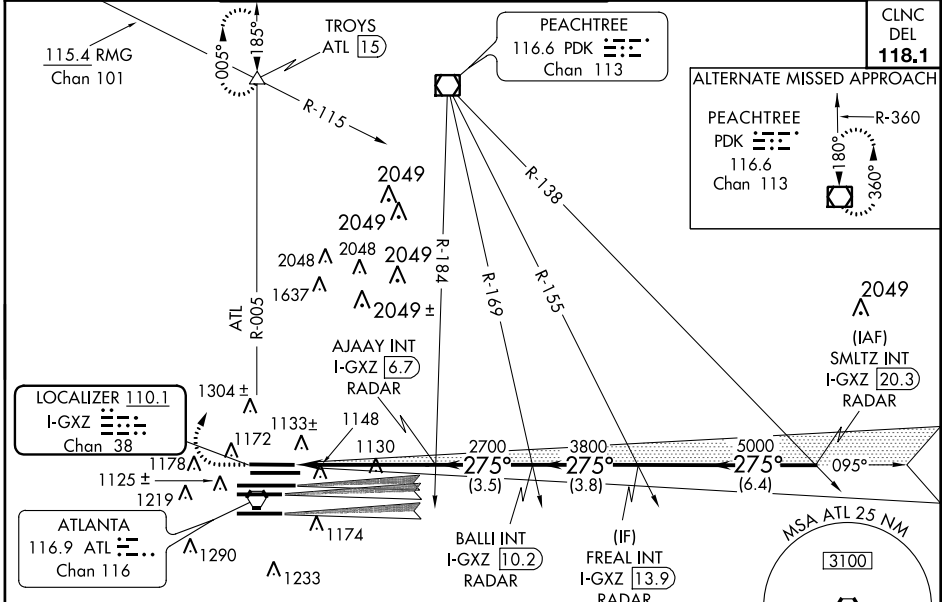
LOC/DME I-GXZ 110.1 Chan 38	APP CRS 275°	Rwy ldg 8800 TDZE 990 Apt Elev 1026
---	------------------------	---

ILS RWY 26R (SA CAT I)
ATLANTA/ HARTSFIELD-JACKSON ATLANTA INTL (ATL)

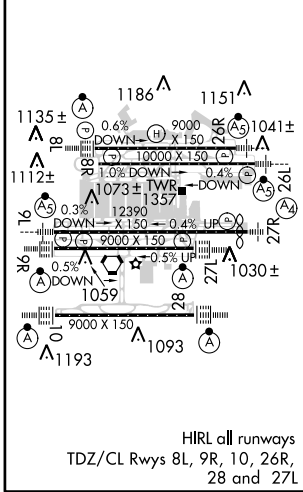
Simultaneous approach authorized with Rwy 27L or 27R or 28, or Rwy 27R and 28. Requires specific OPSPEC, MSPEC, or LOA approval and use of HUD to DH.

MALSR  MISSED APPROACH: Climb to 1400 then climbing right turn to 3500 on ATL VORTAC R-005 to TROYS/ATL 15 DME and hold.

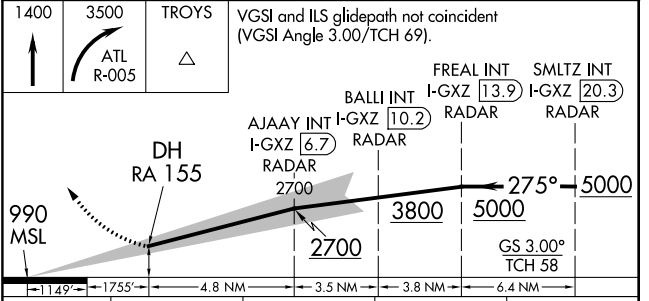
ATIS ARR 119.65 DEP 125.55	ATLANTA APP CON 127.9 379.9	ATLANTA TOWER 8L-26R 8R-26L 9L-27R 9R-27L 10-28 RWYS 119.1 125.325 123.85 119.3 119.5 254.4	ALL RWYS (8L-26R, 8R-26L) (9L-27R, 9R-27L) 10-28 RWYS 121.9 121.75 121.65 254.4	GND CON 121.75 121.65 254.4
--	--	--	--	---------------------------------------



ELEV 1026	D	TDZE 990
-----------	----------	----------



RADAR REQUIRED



CATEGORY	A	B	C	D
S-ILS 26R	RA 155/14 150 DA 1140			

SA CATEGORY I ILS - SPECIAL AIRCREW & AIRCRAFT CERTIFICATION REQUIRED

SE-4, 07 FEB 2013 to 07 MAR 2013

SE-4, 07 FEB 2013 to 07 MAR 2013