

LOC/DME I-OMO 111.55 Chan 52 (Y)	APP CRS 095°	Rwy Idg 9000 THRE 1000 Apt Elev 1026
--	------------------------	--

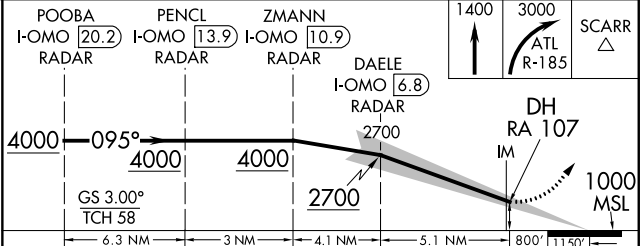
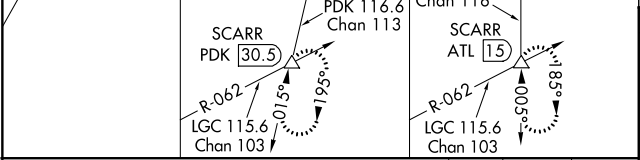
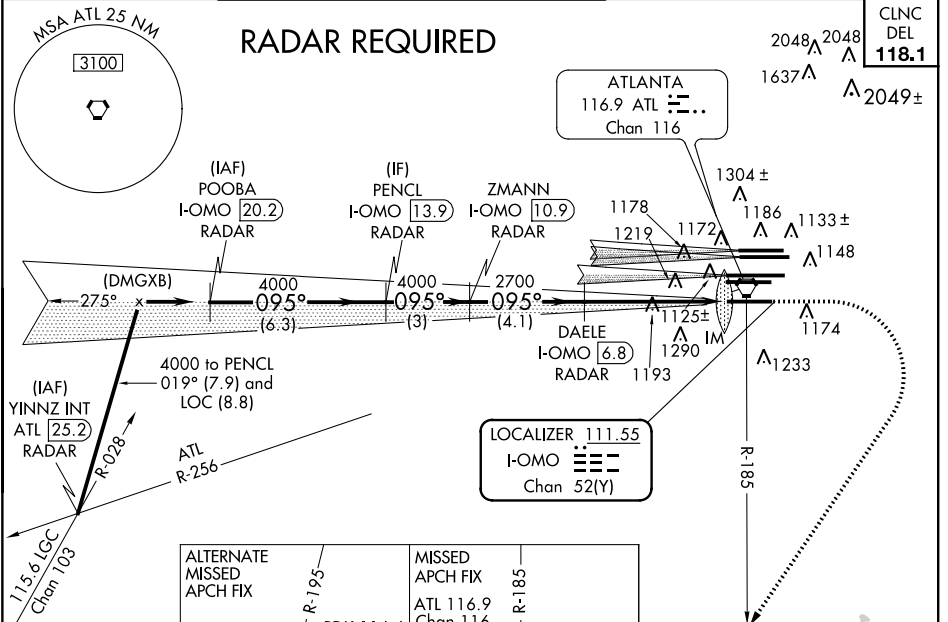
ILS RWY 10 (CAT II)

ATLANTA/ HARTSFIELD-JACKSON ATLANTA INTL (ATL)

Simultaneous approach authorized with Rwy 9L or 8R or 8L, or Rwy 9L and 8L. DME or Radar required. Localizer not suitable for electronic rollout guidance.

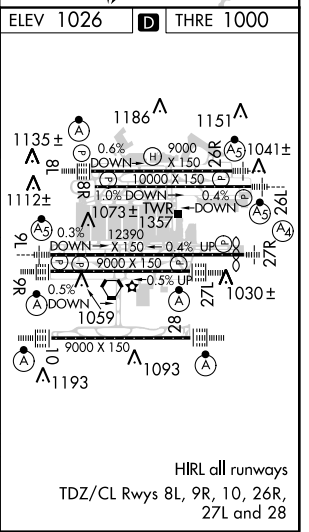
ALSF-2
MISSED APPROACH: Climb to 1400 then climbing right turn to 3000 on ATL VORTAC R-185 to SCARR INT/ATL 15 DME and hold.

ATIS ARR 119.65	ATLANTA APP CON 127.9 379.9	ATLANTA TOWER 8L-26R 8R-26L 9L-27R 9R-27L 10-28 RWYS					ALL RWYS	GND CON (8L-26R,8R-26L) (9L-27R,9R-27L) 10-28 RWYS	ALL RWYS
DEP 125.55	127.9 379.9	119.1 125.325 123.85 119.3 119.5 254.4	121.9	121.75	121.65	254.4			



CATEGORY	A	B	C	D
S-ILS 10	RA 107/12 100 DA 1100			

CATEGORY II ILS - SPECIAL AIRCREW & AIRCRAFT CERTIFICATION REQUIRED



SE-4, 07 FEB 2013 to 07 MAR 2013

SE-4, 07 FEB 2013 to 07 MAR 2013