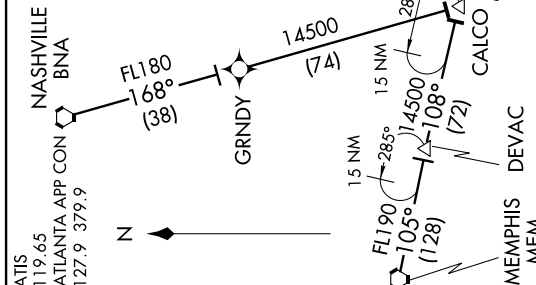


# HERKO SEVEN ARRIVAL (RNAV)

SE-4, 07 FEB 2013 to 07 MAR 2013



# HERKO SEVEN ARRIVAL (RNAV)

(HERKO.HERK07) 12320

MEMPHIS TRANSITION (MEM.HERK07):  
NASHVILLE TRANSITION (BNA.HERK07):

From over CALCO on track 122° to VIKINN, then on track 122° to HERKO, then on track 124° to RPTOR, then on track 140° to NOTRE. Thence on assigned runway transition.  
Landing West Rwy 26L/R: From over NOTRE on track 095° to NOFIV, then on track 095° to FANew, then on track 095° to HAVAD, then on track 094° to IGEBE, then on heading 094°. Expect radar vectors to final approach course.

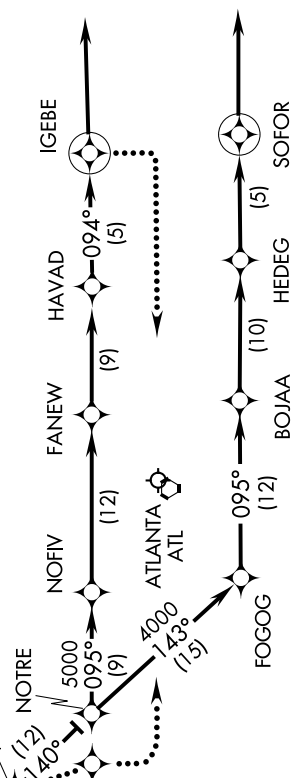
Landing West Rwy 27L/R, 28: From over NOTRE on track 143° to FOGOG, then on track 095° to BOJAA, then on track 095° to HEDEG, then on track 095° to SOFOR, then on heading 095°. Expect radar vectors to final approach course.  
Landing East Rwy 8L/R, 9L/R, 10: From over NOTRE on track 095° to NOFIV, then on track 095° to FANew, then on track 095° to HAVAD, then on track 094° to IGEBE, then on heading 094°. Expect radar vectors to final approach course after RPTOR.

LOST COMMUNICATIONS:

EAST OPERATIONS: At RPTOR track to WOTBA, fly heading 180°, maintain 5000; intercept and execute ILS or LOC Rwy 8L approach. If unable, track to ATL VORTAC and hold, maintain 5000.

WEST OPERATIONS: At IGEBE fly heading 180°, maintain 5000; intercept and execute ILS or LOC Rwy 26R approach. If unable, proceed to ATL VORTAC and hold, maintain 5000.

Landing East: Expect radar vectors to final approach course after RPTOR.



- NOTE: DME/DME/IRU or GPS required.
- NOTE: RNAV 1.
- NOTE: Radar required.
- NOTE: Assigned by ATC only.
- NOTE: This STAR applicable to Turbojet aircraft only.

NOTE: Chart not to scale.

SE-4, 07 FEB 2013 to 07 MAR 2013