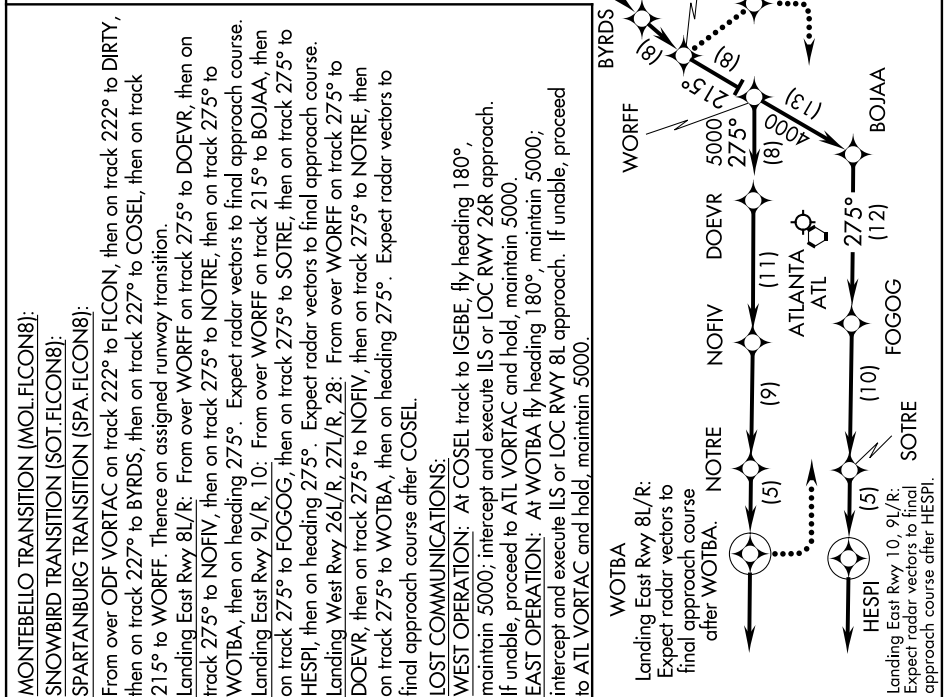
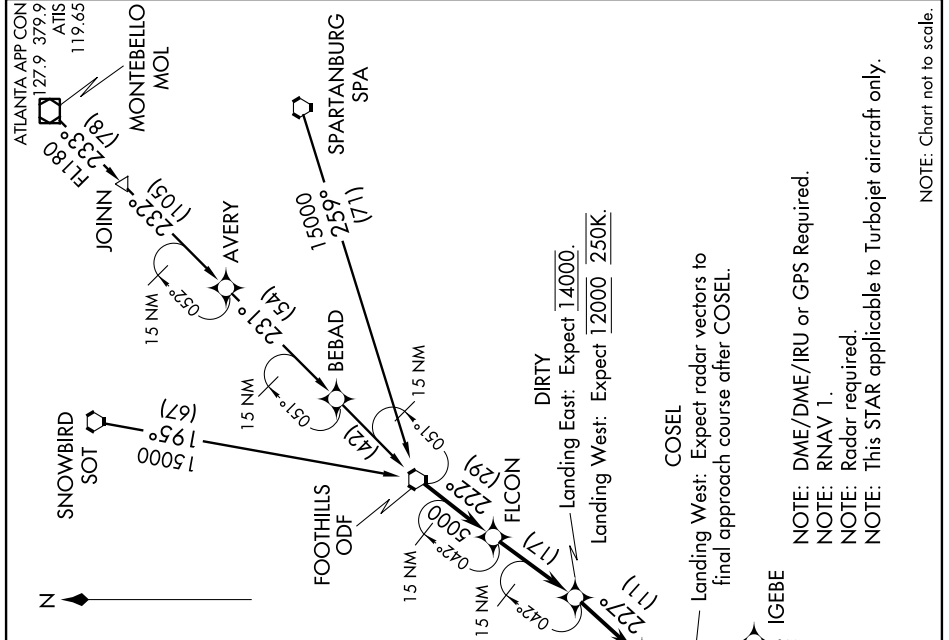


FLCON EIGHT ARRIVAL (RNAV)

SE-4, 07 FEB 2013 to 07 MAR 2013



MONTEBELLO TRANSITION (MOL.FLCON8):
From over ODF VORTAC on track 222° to FLCON, then on track 222° to DIRTY, then on track 227° to BYRDS, then on track 227° to COSEL, then on track 215° to WORFF. Thence on assigned runway transition.

SNOWBIRD TRANSITION (SOT.FLCON8):
Landing East Rwy 8L/R: From over WORFF on track 275° to DOEVR, then on track 275° to NOFIV, then on track 275° to NOTRE, then on track 275° to WOTBA, then on heading 275°. Expect radar vectors to final approach course.

SPARTANBURG TRANSITION (SPA.FLCON8):
Landing East Rwy 9L/R, 10: From over WORFF on track 215° to BOJAA, then on track 275° to FOGOG, then on track 275° to SOTRE, then on track 275° to HESPI, then on heading 275°. Expect radar vectors to final approach course.
Landing West Rwy 26L/R, 27L/R, 28: From over WORFF on track 275° to DOEVR, then on track 275° to NOFIV, then on track 275° to NOTRE, then on track 275° to WOTBA, then on heading 275°. Expect radar vectors to final approach course after COSEL.

LOST COMMUNICATIONS:
WEST OPERATION: At COSEL track to IGEBE, fly heading 180°, maintain 5000; intercept and execute ILS or LOC Rwy 26R approach. If unable, proceed to ATL VORTAC and hold, maintain 5000.
EAST OPERATION: At WOTBA fly heading 180°, maintain 5000; intercept and execute ILS or LOC Rwy 8L approach. If unable, proceed to ATL VORTAC and hold, maintain 5000.

NOTE: DME/DME/IRU or GPS Required.
NOTE: RNAV 1.
NOTE: Radar required.
NOTE: This STAR applicable to Turbojet aircraft only.

NOTE: Chart not to scale.