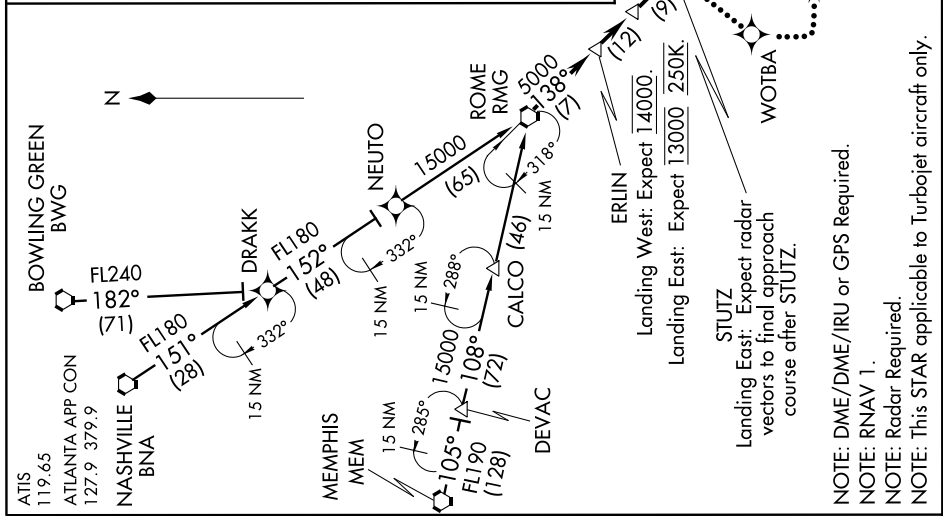


SE-4, 07 FEB 2013 to 07 MAR 2013

BOWLING GREEN TRANSITION (BWG.ERLIN1):
MEMPHIS TRANSITION (MEM.ERLIN1):
NASHVILLE TRANSITION (BNA.ERLIN1):

From over RMG VORTAC on track 138° to ERLIN, then on track 138° to DALAS, then on track 138° to STUTZ, thence on assigned runway transition.
 Landing West Rwy 26L/R: From over STUTZ on track 138° to NOFIV, then on track 095° to FANEW, then on track 095° to HAVAD, then on track 094° to IGEBE, then on heading 094°. Expect radar vectors to final approach course.
 Landing West Rwy 27L/R, 28: From over STUTZ on track 159° to FOGOG, then on track 095° to BOJAA, then on track 095° to HEDEG, then on track 095° to SOFOR, then on heading 095°. Expect radar vectors to final approach course.
 Landing East Rwy 8L/R, 9L/R, 10: From over STUTZ on track 138° to NOFIV, then on track 095° to FANEW, then on track 095° to HAVAD, then on track 094° to IGEBE, then on heading 094°. Expect radar vectors to final approach course after STUTZ.

LOST COMMUNICATIONS:
WEST OPERATION: At IGEBE fly heading 180°, maintain 5000; intercept and execute ILS or LOC Rwy 26R approach. If unable, proceed to ATL VORTAC and hold, maintain 5000.
EAST OPERATION: At STUTZ track to WOTBA, fly heading 180°, maintain 5000; intercept and execute ILS or LOC Rwy 8L approach. If unable, proceed to ATL VORTAC and hold, maintain 5000.



SE-4, 07 FEB 2013 to 07 MAR 2013

NOTE: Chart not to scale.