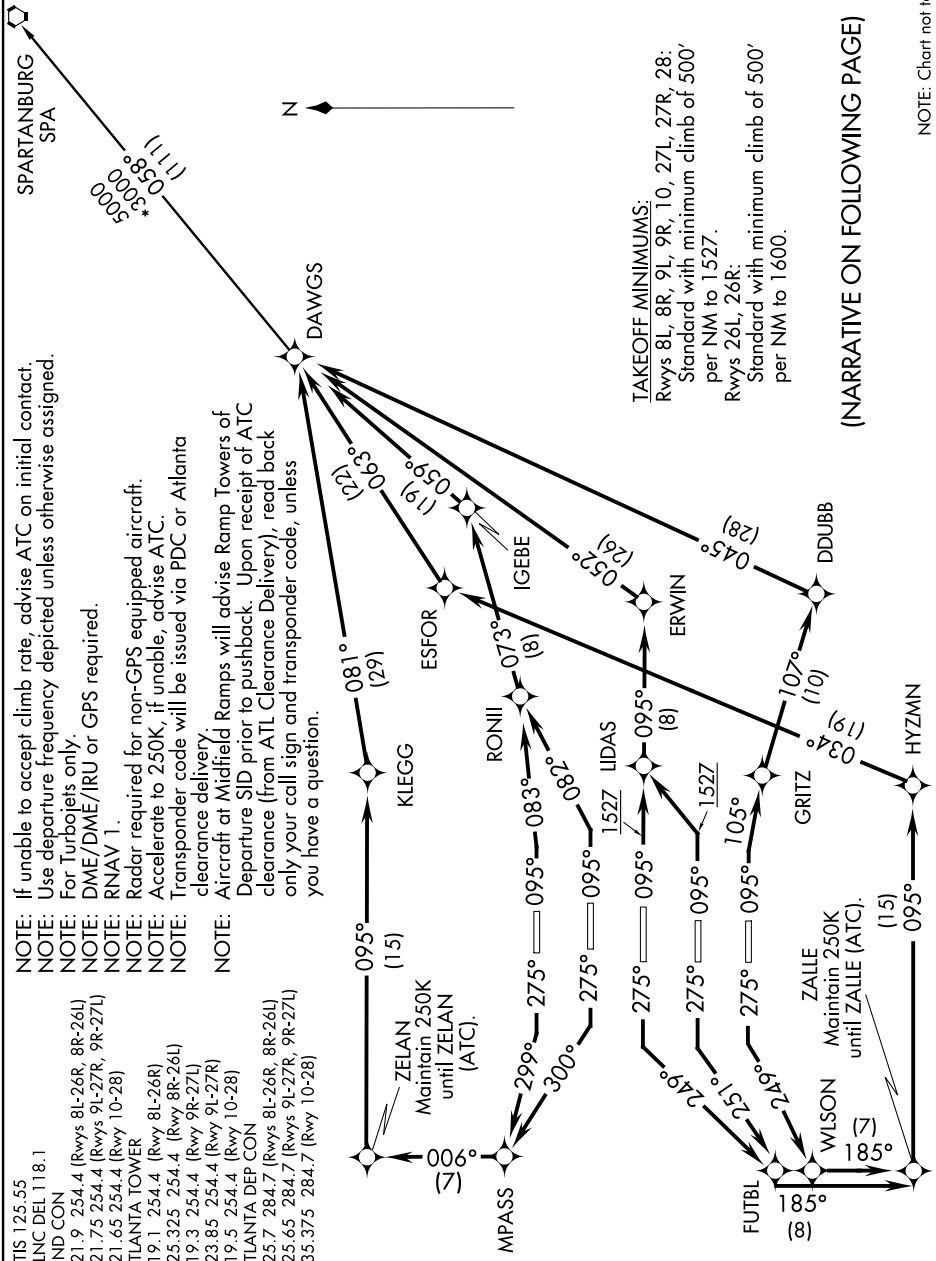


SE-4, 07 FEB 2013 to 07 MAR 2013

NOTE: If unable to accept climb rate, advise ATC on initial contact.
 NOTE: Use departure frequency depicted unless otherwise assigned.
 NOTE: For Turbojets only.
 NOTE: DME/DME/IRU or GPS required.
 NOTE: RNAV 1.
 NOTE: Radar required for non-GPS equipped aircraft.
 NOTE: Accelerate to 250K, if unable, advise ATC.
 NOTE: Transponder code will be issued via PDC or Atlanta clearance delivery.
 NOTE: Aircraft at Midfield Ramps will advise Ramp Towers of Departure SID prior to pushback. Upon receipt of ATC clearance (from ATL Clearance Delivery), read back only your call sign and transponder code, unless you have a question.

- ATIS 125.55
- CLNC DEL 118.1
- GND CON
- 121.9 254.4 (Rwys 8L-26R, 8R-26L)
- 121.75 254.4 (Rwys 9L-27R, 9R-27L)
- 121.65 254.4 (Rwy 10-28)
- ATLANTA TOWER
- 119.1 254.4 (Rwy 8L-26R)
- 125.325 254.4 (Rwy 8R-26L)
- 119.3 254.4 (Rwy 9R-27L)
- 123.85 254.4 (Rwy 9L-27R)
- 119.5 254.4 (Rwy 10-28)
- ATLANTA DEP CON
- 125.7 284.7 (Rwys 8L-26R, 8R-26L)
- 125.65 284.7 (Rwys 9L-27R, 9R-27L)
- 135.375 284.7 (Rwy 10-28)



TAKEOFF MINIMUMS:

Rwys 8L, 8R, 9L, 9R, 10, 27L, 27R, 28:
 Standard with minimum climb of 500'
 per NM to 1527.
 Rwys 26L, 26R:
 Standard with minimum climb of 500'
 per NM to 1600.

(NARRATIVE ON FOLLOWING PAGE)

NOTE: Chart not to scale

SE-4, 07 FEB 2013 to 07 MAR 2013