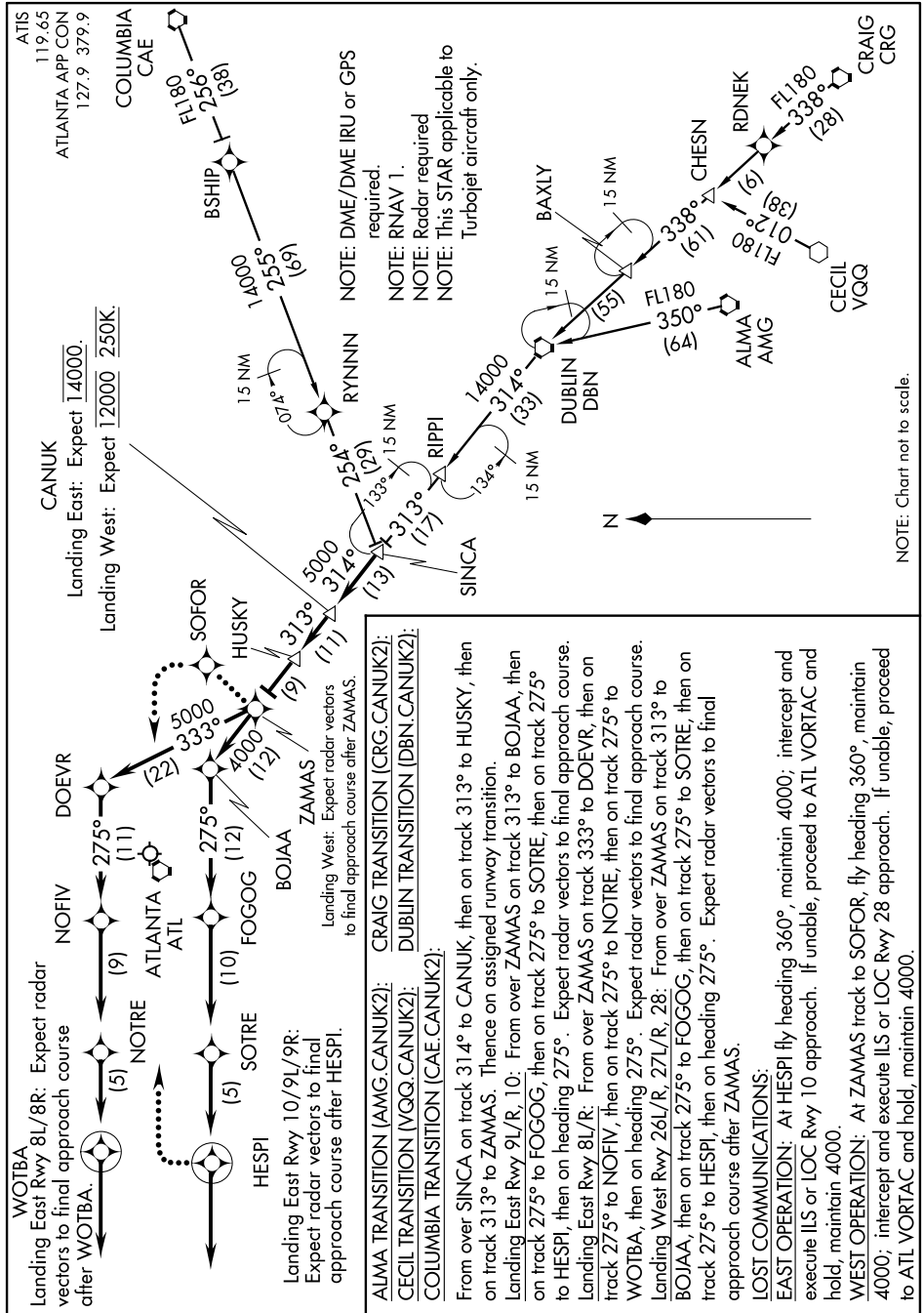


# CANUK TWO ARRIVAL (RNAV)

SE-4, 07 FEB 2013 to 07 MAR 2013



SE-4, 07 FEB 2013 to 07 MAR 2013

**ALMA TRANSITION (AMG.CANUK2):** From over SINCA on track 314° to CANUK, then on track 313° to HUSKY, then on track 313° to ZAMAS. Thence on assigned runway transition.

**CECIL TRANSITION (VQO.CANUK2):** Landing East Rwy 9L/R, 10: From over ZAMAS on track 313° to BOJAA, then on track 275° to FOGOG, then on track 275° to SOTRE, then on track 275° to HESPI, then on heading 275°. Expect radar vectors to final approach course.

**COLUMBIA TRANSITION (CAE.CANUK2):** Landing East Rwy 8L/R: From over ZAMAS on track 333° to DOEVR, then on track 275° to NOFIV, then on track 275° to NOTRE, then on track 275° to WOTBA, then on heading 275°. Expect radar vectors to final approach course.

**LOST COMMUNICATIONS:** Landing West Rwy 26L/R, 27L/R, 28: From over ZAMAS on track 313° to BOJAA, then on track 275° to FOGOG, then on track 275° to SOTRE, then on track 275° to HESPI, then on heading 275°. Expect radar vectors to final approach course after ZAMAS.

**EAST OPERATION:** At HESPI fly heading 360°, maintain 4000; intercept and execute ILS or LOC Rwy 10 approach. If unable, proceed to ATL VORTAC and hold, maintain 4000.

**WEST OPERATION:** At ZAMAS track to SOFOR, fly heading 360°, maintain 4000; intercept and execute ILS or LOC Rwy 28 approach. If unable, proceed to ATL VORTAC and hold, maintain 4000.