

(BRAVS7.BRAVS) 13010

ATLANTA/ HARTSFIELD-JACKSON ATLANTA INTL (ATL)

BRAVS SEVEN DEPARTURE (RNAV)

SL-26 (FAA)

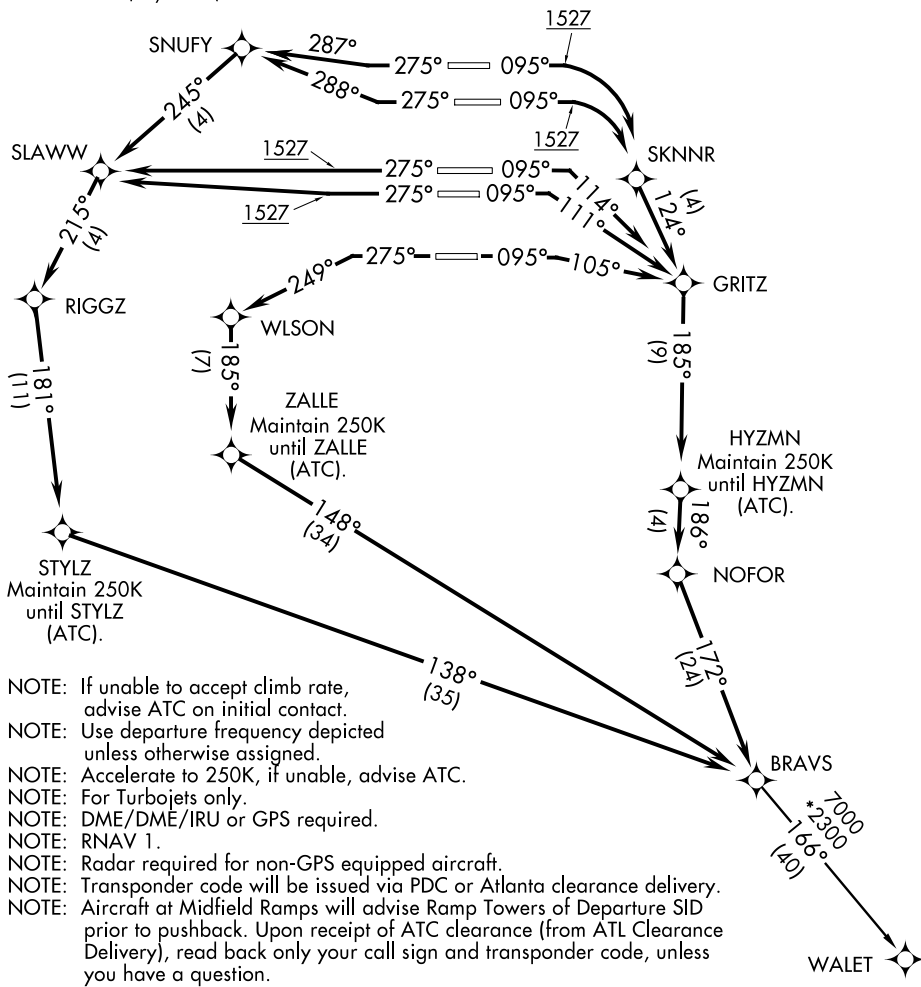
ATLANTA, GEORGIA

ATIS 125.55
 CLNC DEL 118.1
 GND CON
 121.9 254.4 (Rwys 8L-26R, 8R-26L)
 121.75 254.4 (Rwys 9L-27R, 9R-27L)
 121.65 254.4 (Rwy 10-28)
 ATLANTA TOWER
 119.1 254.4 (Rwy 8L-26R)
 125.325 254.4 (Rwy 8R-26L)
 119.3 254.4 (Rwy 9R-27L)
 123.85 254.4 (Rwy 9L-27R)
 119.5 254.4 (Rwy 10-28)
 ATLANTA DEP CON
 125.7 284.7 (Rwys 8L-26R, 8R-26L)
 125.65 284.7 (Rwys 9L-27R, 9R-27L)
 135.375 284.7 (Rwy 10-28)

TAKEOFF MINIMUMS:

Rwys 8L, 8R, 9L, 9R, 10, 26L, 26R, 28: Standard with minimum climb of 500' per NM to 1527.

Rwys 27L, 27R: Standard with minimum climb of 500' per NM to 1900.



SE-4, 07 FEB 2013 to 07 MAR 2013

SE-4, 07 FEB 2013 to 07 MAR 2013

- NOTE: If unable to accept climb rate, advise ATC on initial contact.
- NOTE: Use departure frequency depicted unless otherwise assigned.
- NOTE: Accelerate to 250K, if unable, advise ATC.
- NOTE: For Turbojets only.
- NOTE: DME/DME/IRU or GPS required.
- NOTE: RNAV 1.
- NOTE: Radar required for non-GPS equipped aircraft.
- NOTE: Transponder code will be issued via PDC or Atlanta clearance delivery.
- NOTE: Aircraft at Midfield Ramps will advise Ramp Towers of Departure SID prior to pushback. Upon receipt of ATC clearance (from ATL Clearance Delivery), read back only your call sign and transponder code, unless you have a question.

(NARRATIVE ON FOLLOWING PAGE)

NOTE: Chart not to scale

BRAVS SEVEN DEPARTURE (RNAV)

ATLANTA, GEORGIA

(BRAVS7.BRAVS) 13010

ATLANTA/ HARTSFIELD-JACKSON ATLANTA INTL (ATL)