

ASTORIA, OREGON

AL-24 (FAA)

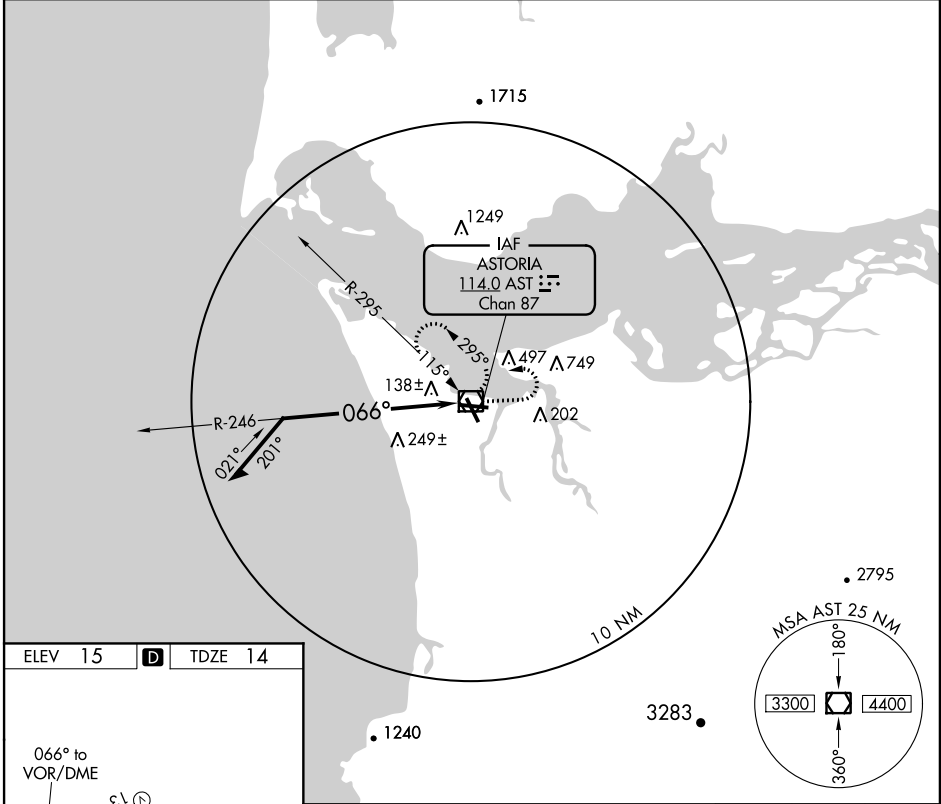
VOR RWY 8

ASTORIA RGNL (AST)

VOR/DME AST 114.0 Chan 87	APP CRS 066°	Rwy Idg TDZE Apt Elev	4896 14 15
---	------------------------	-----------------------------	---------------------------------------

▽
▲ MISSED APPROACH: Climb to 1000 then climbing left turn to 3000 in AST VOR/DME holding pattern.

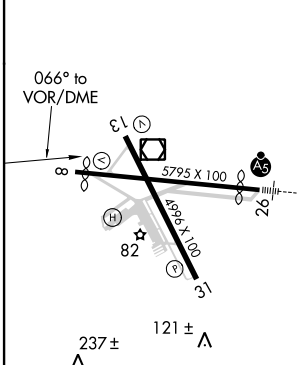
ASOS 135.375	SEATTLE CENTER 124.2 317.6	MC MINNVILLE RADIO 122.3	UNICOM 122.8 (CTAF) 0
------------------------	--------------------------------------	------------------------------------	--



NW-1, 07 FEB 2013 to 07 MAR 2013

NW-1, 07 FEB 2013 to 07 MAR 2013

ELEV 15	D	TDZE 14
---------	----------	---------



CATEGORY	A	B	C	D
S-8	660-1 646 (700-1)	660-1 646 (700-1 3/4)	660-2 646 (700-2)	660-2 646 (700-2)
CIRCLING	660-1 645 (700-1)	760-1 745 (800-1 1/4)	800-2 785 (800-2 1/4)	900-3 885 (900-3)

REIL Rwy 8 **0**
REIL Rwy 13
MIRL Rwy 8-26 and 13-31 **0**

ASTORIA, OREGON
Amdt 12 11125

46°09'N-123°53'W

ASTORIA RGNL (AST)
VOR RWY 8