

RNAV (GPS) RWY 26

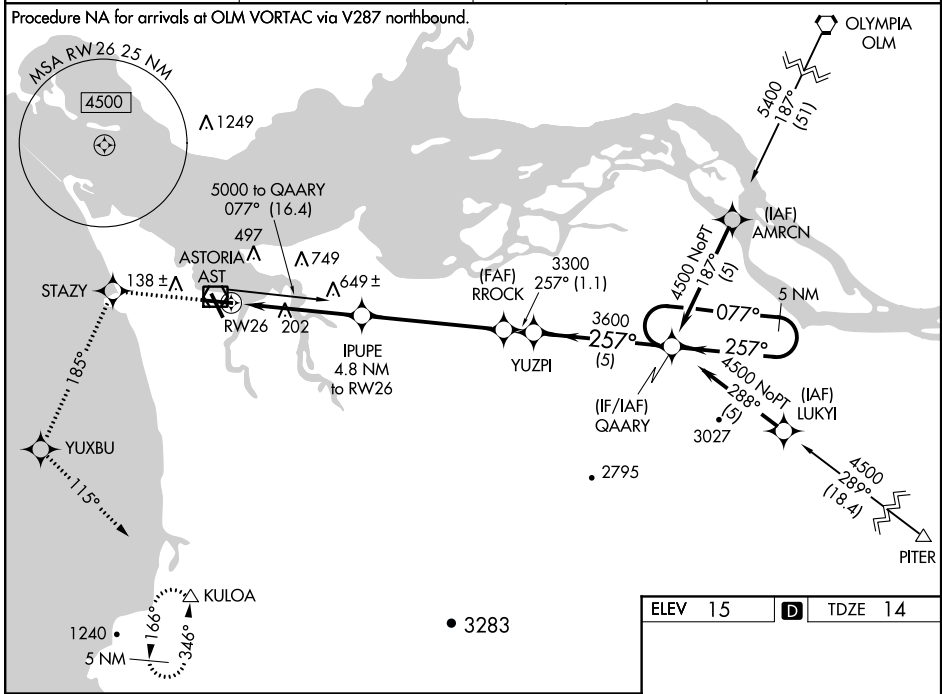
ASTORIA RGNL (AST)

WAAS CH 97711 W26A	APP CRS 257°	Rwy Idg 4782 TDZE 14 Apt Elev 15
---------------------------------	------------------------	---

⚠ Inoperative table does not apply. DME/DME RNP -0.3 NA. Visibility reduction by helicopters NA.
⚠ When local altimeter setting not received, use Kelso altimeter setting and increase all DA 95 feet and all MDA 100 feet; increase LPV all Cats, LNAV Cats C and D and circling Cats C and D visibility ¼ mile.

MALSRL
⚠ MISSED APPROACH: Climb to 5000 direct STAZY and via track 185° to YUXBU and via track 115° to KULOA and hold.

ASOS 135.375	SEATTLE CENTER 124.2 317.6	MC MINNVILLE RADIO 122.3	UNICOM 122.8 (CTAF) Ⓛ
------------------------	--------------------------------------	------------------------------------	---------------------------------



NW-1, 07 FEB 2013 to 07 MAR 2013

NW-1, 07 FEB 2013 to 07 MAR 2013

5000	STAZY	YUXBU	KULOA	QAARY	5 NM Holding Pattern
↑	◆ 185° tr	◆ 115° tr	△		
*LNAV only					
	RW26	IPUPE 4.8 NM to RW26	RROCK	YUZPI	QAARY
		1600	3300	3600	4500
	4.8 NM	5.1 NM	1.1	5 NM	
CATEGORY	A	B	C	D	
LPV DA	300-1		286 (300-1)		
LNAV MDA	900-1¼	886 (900-1¼)	900-2¾ 886 (900-2¾)	900-3 886 (900-3)	
CIRCLING	900-1¼	885 (900-1¼)	900-2¾ 885 (900-2¾)	900-3 885 (900-3)	

