

ASTORIA, OREGON

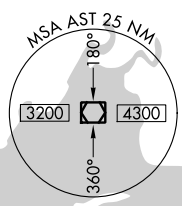
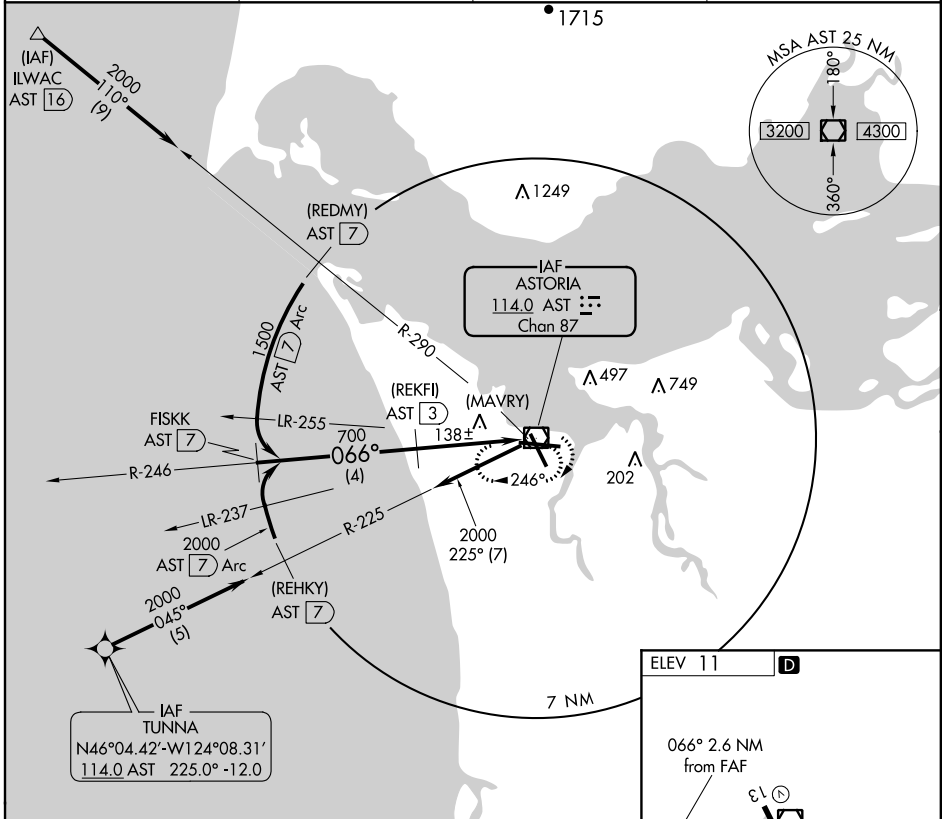
AL-24 (FAA)

COPTER VOR/DME or GPS 066°

ASTORIA RGNL (AST)

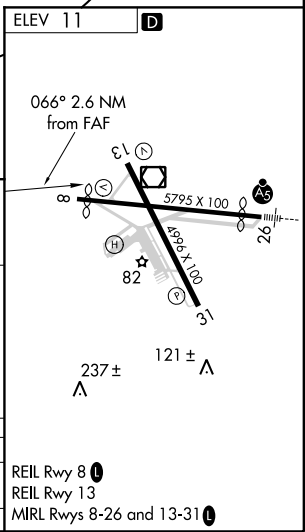
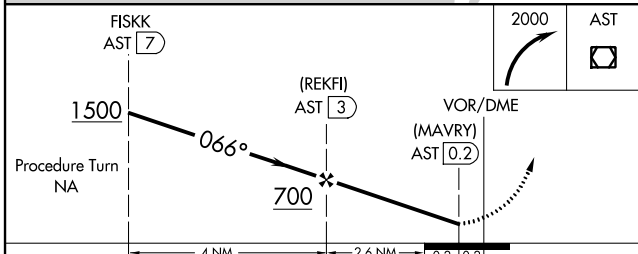
VOR/DME AST 114.0 Chan 87	APP CRS 066°	Rwy Idg TDZE Apt Elev	N/A N/A 11
---	------------------------	-----------------------------	-------------------------

NA		MISSED APPROACH: Climbing right turn to 2000 in AST VOR/DME holding pattern.	
ASOS 135.375	SEATTLE CENTER 124.2 317.6	MC MINNVILLE RADIO 122.3	UNICOM 122.8 (CTAF) 0



NW-1, 07 FEB 2013 to 07 MAR 2013

NW-1, 07 FEB 2013 to 07 MAR 2013



CATEGORY	COPTER	B	C	D
H-066°	500-½ 489 (500-½)		NA	

CIRCLING NOT AUTHORIZED

ASTORIA, OREGON
Amdt 1 11125

46°09'N-123°53'W

ASTORIA RGNL (AST)

COPTER VOR/DME or GPS 066°