

COPTER LOC/DME 257°

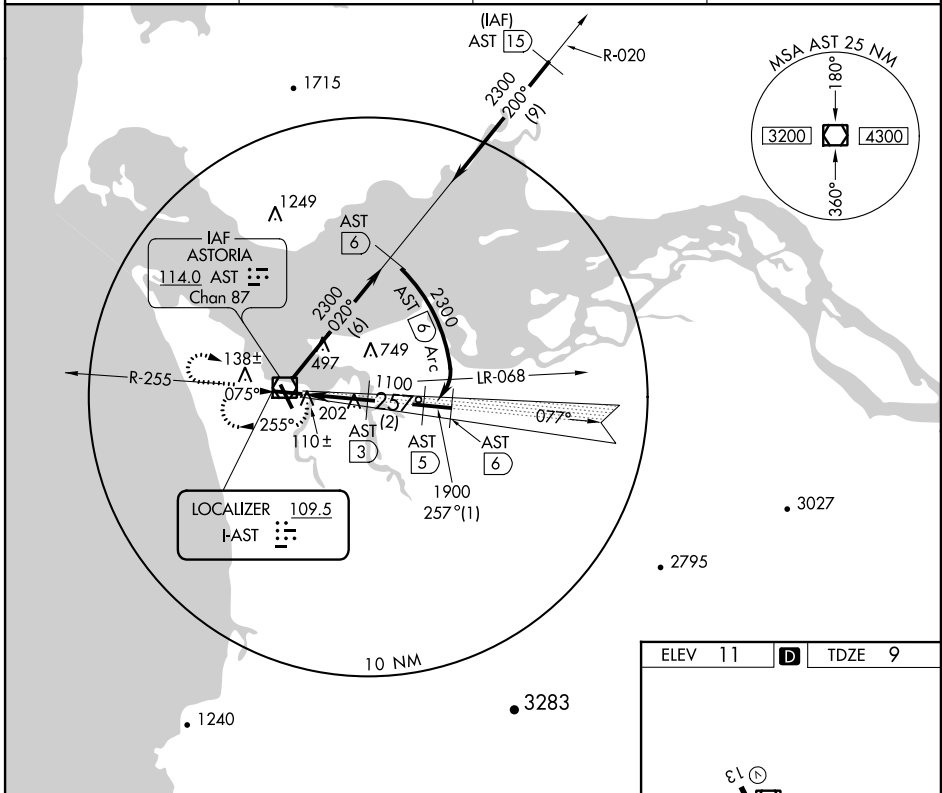
ASTORIA RGNL (AST)

LOC I-AST 109.5	APP CRS 257°	Rwy Idg TDZE Apt Elev	N/A 9 11
---------------------------	------------------------	-----------------------------	-------------------------------------

NA DME from AST VOR/DME. Simultaneous reception of I-AST and AST VOR/DME required. Increase visibility to ½ mile for inoperative MALSR.

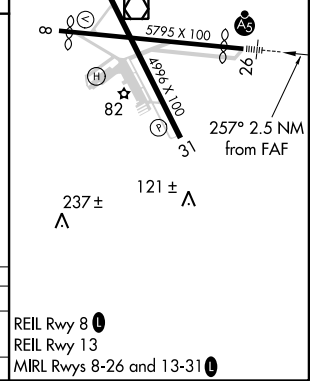
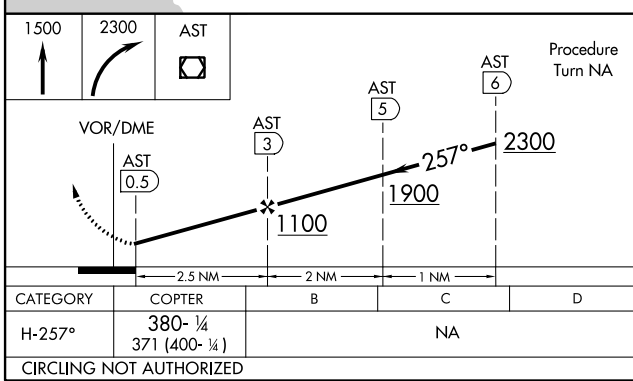
MISSED APPROACH: Climb to 1500 then climbing right turn to 2300 direct AST VOR/DME and hold.

ASOS 135.375	SEATTLE CENTER 124.2 317.6	MC MINNVILLE RADIO 122.3	UNICOM 122.8 (CTAF) 0
------------------------	--------------------------------------	------------------------------------	---------------------------------



NW-1, 07 FEB 2013 to 07 MAR 2013

NW-1, 07 FEB 2013 to 07 MAR 2013



REIL Rwy 8 0
REIL Rwy 13
MIRL Rwys 8-26 and 13-31 0