

ARDMORE, OKLAHOMA

AL-22 (FAA)

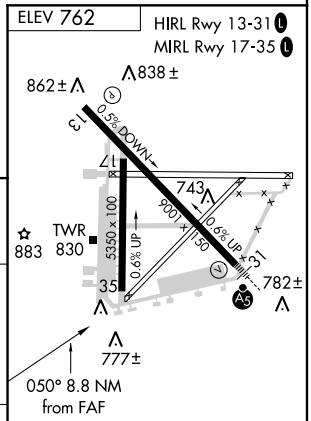
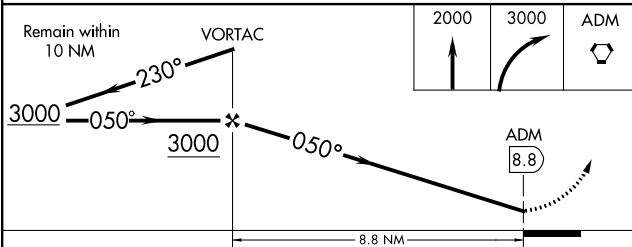
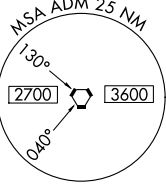
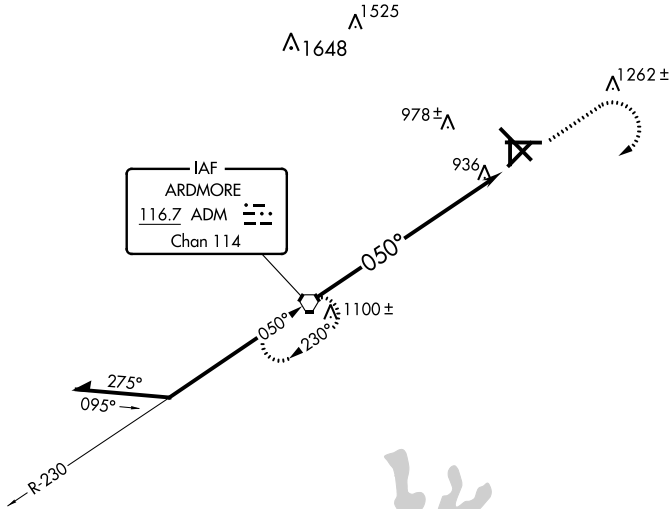
VORTAC ADM <b>116.7</b> Chan 114	APP CRS <b>050°</b>	Rwy ldg TDZE Apt Elev <b>N/A</b> <b>N/A</b> <b>762</b>
--	------------------------	---

**VOR-B**  
ARDMORE MUNI (ADM)

**▼** When control tower closed use Ardmore Downtown  
**▲** Executive altimeter setting and increase all MDAs 40 feet.

MISSED APPROACH: Climb to 2000 then climbing right turn to 3000 direct ADM VORTAC and hold.

ATIS <b>125.6</b>	FORT WORTH CENTER <b>124.75 323.0</b>	ARDMORE TOWER ★ <b>118.5 (CTAF) 257.7</b>	GND CON <b>121.8</b>	UNICOM <b>122.95</b>
----------------------	--	--	-------------------------	-------------------------



CATEGORY	A	B	C	D
CIRCLING	1340-1 578 (600-1)	1380-1 618 (700-1)	1500-2 738 (800-2)	1540-2½ 778 (800-2½)

FAF to MAP 8.8 NM					
Knots	60	90	120	150	180
Min:Sec	8:48	5:52	4:24	3:31	2:56

ARDMORE, OKLAHOMA  
Amdt 1 12320

34°18'N-97°01'W

ARDMORE MUNI (ADM)  
**VOR-B**

SC-1, 07 FEB 2013 to 07 MAR 2013

SC-1, 07 FEB 2013 to 07 MAR 2013