

LOC I-AIW 108.9	APP CRS 309°	Rwy Idg 9001
		THRE 729
		Apt Elev 777

ILS or LOC RWY 31

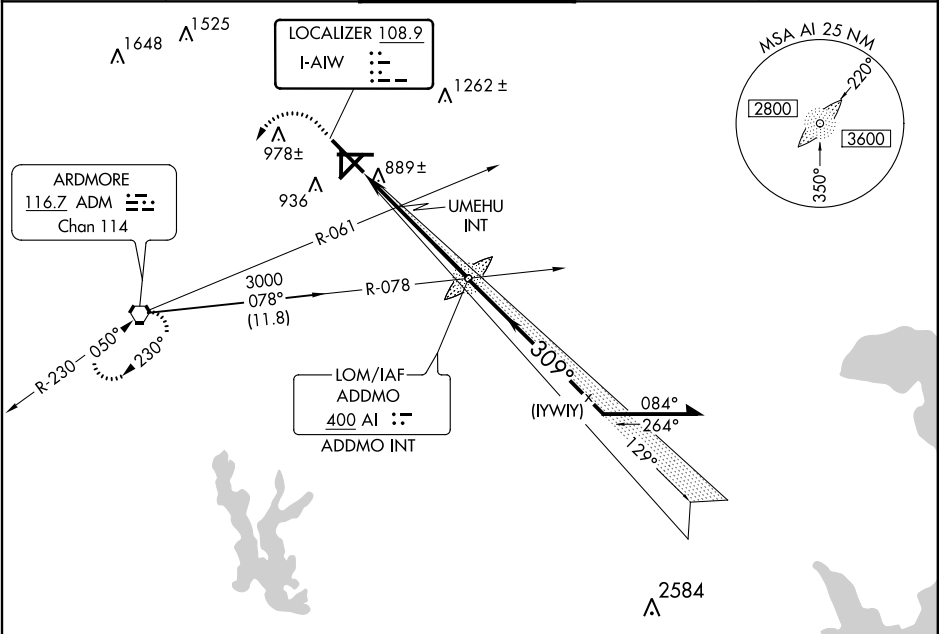
ARDMORE MUNI (ADM)

⚠ Circling to Rwy 17/35 NA at night. Autopilot coupled approach NA below 1360.
⚠ When local altimeter setting not received, use Ardmore Downtown Executive altimeter setting and increase all DA 35 feet and all MDA 40 feet; increase all S-LOC Cats C and D visibility 1/8 mile and all Circling Cat D visibilities 1/4 mile. UMEHU Fix minimums, for inoperative MALSR increase S-LOC Cats C and D visibility to 1 1/8 miles. When VGSI inop, Circling to Rwy 13 NA at night.

MALSR

MISSED APPROACH: Climb to 2000 then climbing left turn to 3000 direct ADM VORTAC and hold.

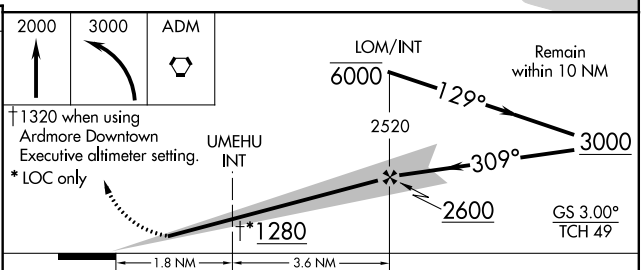
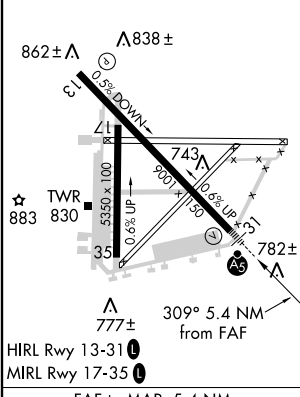
ATIS 125.6	FORT WORTH CENTER 124.75 323.0	ARDMORE TOWER * 118.5 (CTAF) 0 257.7	GND CON 121.8	UNICOM 122.95
----------------------	--	--	-------------------------	-------------------------



SC-1, 07 FEB 2013 to 07 MAR 2013

SC-1, 07 FEB 2013 to 07 MAR 2013

ELEV 777	THRE 729
----------	----------



FAF to MAP 5.4 NM					
Knots	60	90	120	150	180
Min:Sec	5:24	3:36	2:42	2:10	1:48

CATEGORY	A	B	C	D
S-ILS 31	945-1/2 216 (200-1/2)			
S-LOC 31	1280-1/2	551 (600-1/2)	1280-1 1/8	551 (600-1 1/8)
CIRCLING	1380-1	603 (700-1)	1380-3 1/4	1440-2
			603 (700-1 3/4)	663 (700-2)
UMEHU FIX MINIMUMS (DUAL VOR RECEIVERS REQUIRED)				
S-LOC 31	1140-1/2	411 (400-1/2)	1140-3/4	411 (400-3/4)
CIRCLING	1380-1	603 (700-1)	1380-1 3/4	1440-2
			603 (700-1 3/4)	663 (700-2)