

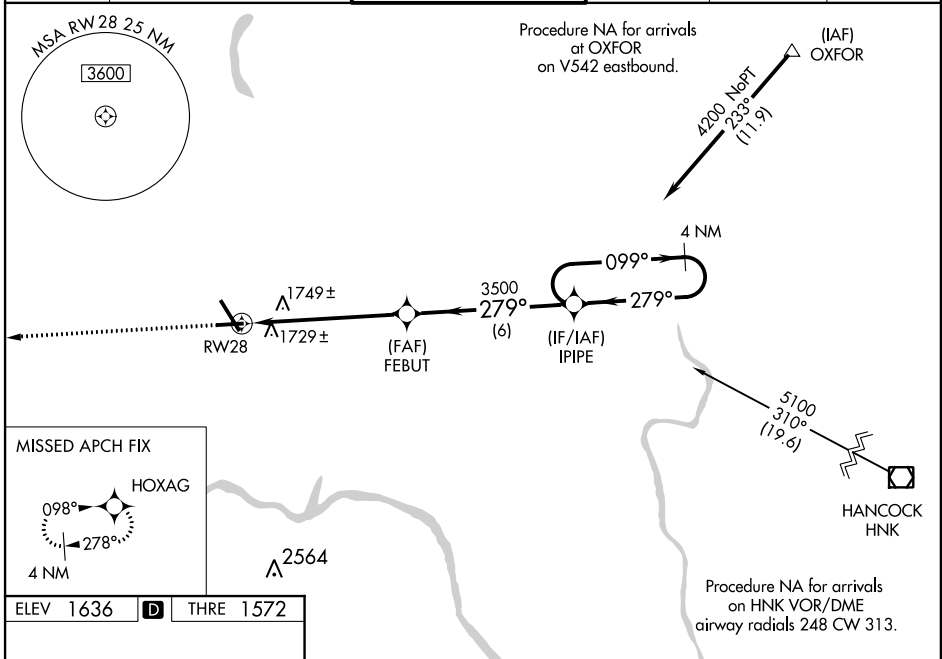
WAAS CH 82120 W28A	APP CRS 279°	Rwy Idg THRE 1572 Apt Elev 1636	5001
--	------------------------	---	-------------

BINGHAMTON/
GREATER BINGHAMTON/EDWIN A. LINK FIELD (BGM) **RNAV (GPS) RWY 28**

⚠ Baro-VNAV NA when using Ithaca altimeter setting. For uncompensated Baro-VNAV systems, LNAV/VNAV NA below -18°C (0°F) or above 33°C (91°F). DME/DME RNP-0.3 NA. Visibility reduction by helicopters NA. When local altimeter setting not received, use Ithaca altimeter setting and increase all DA 138 feet and all MDA 140 feet; increase LPV all Cats visibility ½ mile, LNAV/VNAV all Cats ⅓ mile, LNAV Cats C/D visibility ⅓ mile and Circling Cats C/D visibility ¼ mile. VDP NA with Ithaca altimeter setting. When VGSI inoperative, Circling Rwy 34 NA at night.

MISSED APPROACH:
Climb to 3900 direct HOXAG and hold.

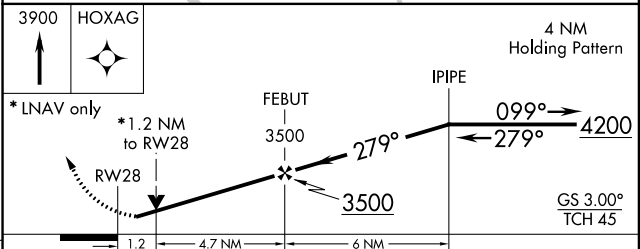
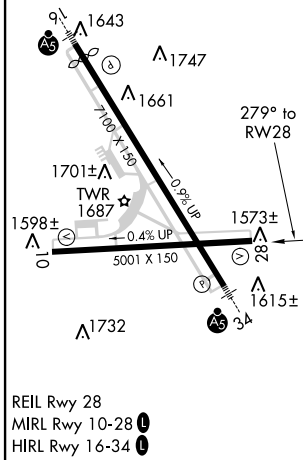
ATIS 128.15	BINGHAMTON APP CON * 118.6 257.625	BINGHAMTON TOWER * 119.3 (CTAF) 239.25	GND CON 121.9	CLNC DEL 125.05	UNICOM 122.95
-----------------------	--	--	-------------------------	---------------------------	-------------------------



NE-2, 07 FEB 2013 to 07 MAR 2013

NE-2, 07 FEB 2013 to 07 MAR 2013

ELEV 1636	D	THRE 1572
------------------	----------	------------------



CATEGORY	A	B	C	D
LPV DA		1822-¾	250 (200-¾)	
LNAV/VNAV DA		2076-1⅝	504 (500-1⅝)	
LNAV MDA	2000-1	428 (400-1)	2000-1¼	428 (400-1¼)
CIRCLING	2120-1	484 (500-1)	2120-1½ 484 (500-1½)	2200-2 564 (600-2)