

WAAS CH 66015 W16A	APP CRS 160°	Rwy Idg 6700 TDZE 1634 Apt Elev 1636
--	------------------------	---

BINGHAMTON/
GREATER BINGHAMTON/EDWIN A. LINK FIELD (BGM)

RNAV (GPS) RWY 16

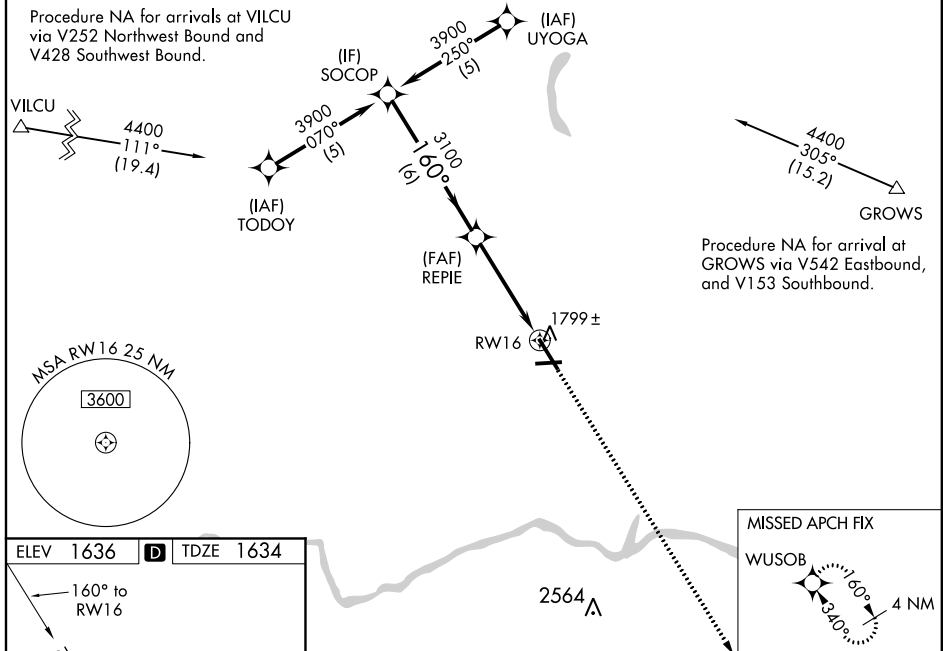
▼ When VGSI inoperative, Circling Rwy 34 NA at night. Inoperative table does not apply to LPV all Cats. For uncompensated Baro-VNAV systems, LNAV/VNAV NA below -18°C (0°F) or above 45°C (113°F). DME/DME RNP-0.3 NA. Visibility reduction by helicopters NA. When local altimeter setting not received, use Ithaca altimeter setting and increase all DA 138 feet and all MDA 140 feet and increase LNAV/VNAV all Cats visibility ½ mile and LNAV and Circling Cats C and D visibility ¼ mile. For inoperative MALSR increase LNAV Cats A, C and D visibility ¼ mile. For inoperative MALSR when using Ithaca altimeter setting increase LPV all Cats visibility ½ mile, LNAV Cats A and B visibility ¼ mile. Baro-VNAV and VDP NA when using Ithaca altimeter setting.



MISSED APPROACH:
Climb to 4000 direct WUSOB and hold.

ATIS 128.15	BINGHAMTON APP CON * 118.6 257.625	BINGHAMTON TOWER * 119.3 (CTAF) 0 239.25	GND CON 121.9	CLNC DEL 125.05	UNICOM 122.95
-----------------------	--	--	-------------------------	---------------------------	-------------------------

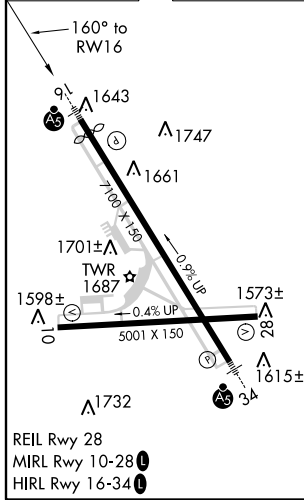
Procedure NA for arrivals at VILCU via V252 Northwest Bound and V428 Southwest Bound.



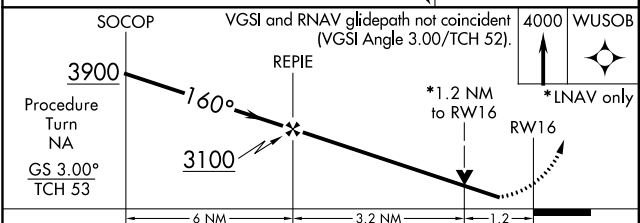
NE-2, 07 FEB 2013 to 07 MAR 2013

NE-2, 07 FEB 2013 to 07 MAR 2013

ELEV 1636	D	TDZE 1634
-----------	----------	-----------



BINGHAMTON, NEW YORK
Amdt 1 11 FEB10



CATEGORY	A	B	C	D
LPV DA	1884-¾ 250 (300-¾)			
LNAV/ VNAV DA	1984-¾ 350 (400-¾)			
LNAV MDA	2060-¾ 426 (500-¾)		2060-1 426 (500-1)	
CIRCLING	2120-1	484 (500-1)	2120-1½ 484 (500-1½)	2200-2 564 (600-2)