

AMARILLO, TEXAS

AL-19 (FAA)

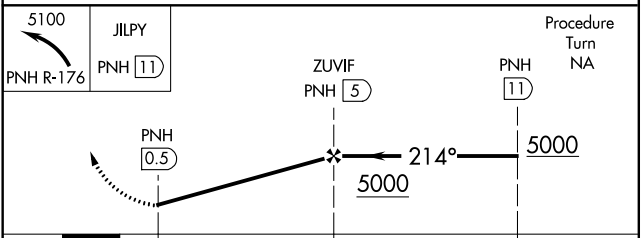
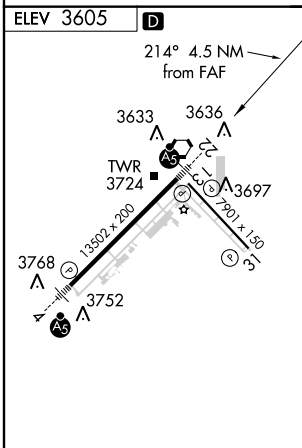
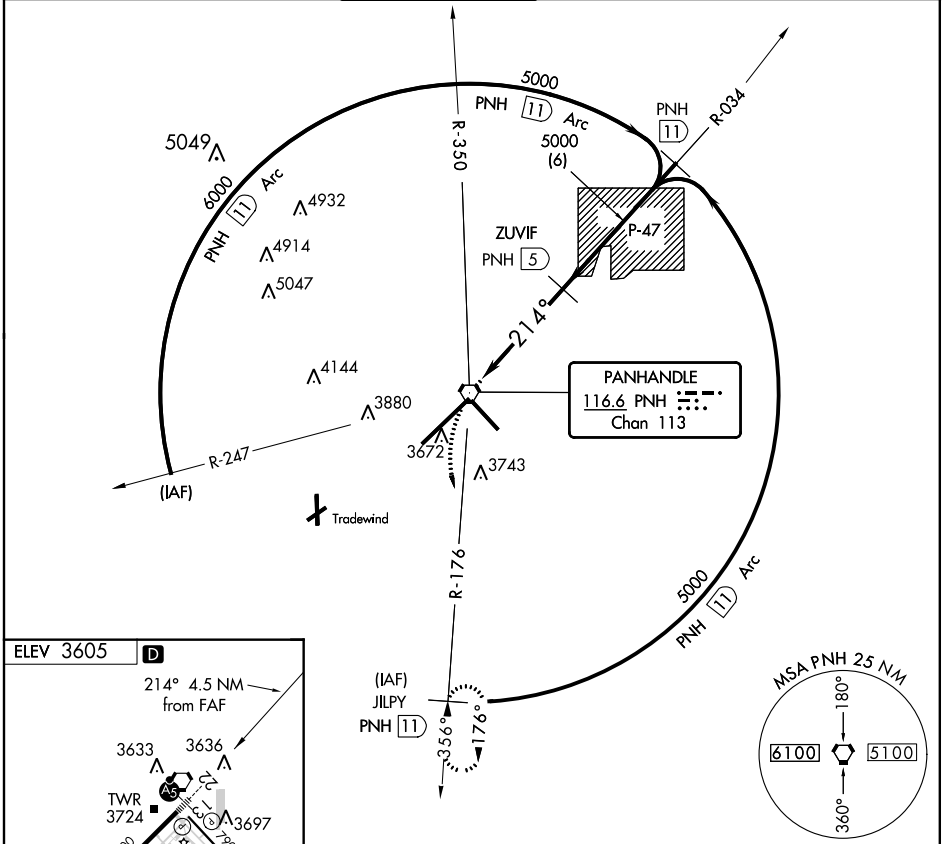
VORTAC PNH 116.6 Chan 113	APP CRS 214°	Rwy ldg TDZE Apt Elev 3605	N/A N/A 3605
---	------------------------	--	---

VOR/DME-A

AMARILLO/ RICK HUSBAND AMARILLO INTL (A.M.A)

ASR	MISSED APPROACH: Climbing left turn to 5100 via PNH-176 to JILPY/11 DME and hold.				
-----	---	--	--	--	--

ATIS 118.85 350.3	AMARILLO APP CON* 119.5 307.0	AMARILLO TOWER* 118.3 (CTAF) 257.9	GND CON 121.9 348.6	CLNC DEL 121.65	UNICOM 122.95
-----------------------------	---	--	-------------------------------	---------------------------	-------------------------



REIL Rwy 13					
REIL Rwy 31					
HIRL Rwys 4-22 and 13-31					
CATEGORY	A	B	C	D	E
CIRCLING	4080-1	473 (500-1)	4080-1½ 473 (500-1½)	4240-2 633 (700-2)	4460-3 853 (900-3)

AMARILLO, TEXAS
Orig 12264

AMARILLO/ RICK HUSBAND AMARILLO INTL (A.M.A)
35°13'N-101°42'W
VOR/DME-A

SC-2, 07 FEB 2013 to 07 MAR 2013

SC-2, 07 FEB 2013 to 07 MAR 2013